

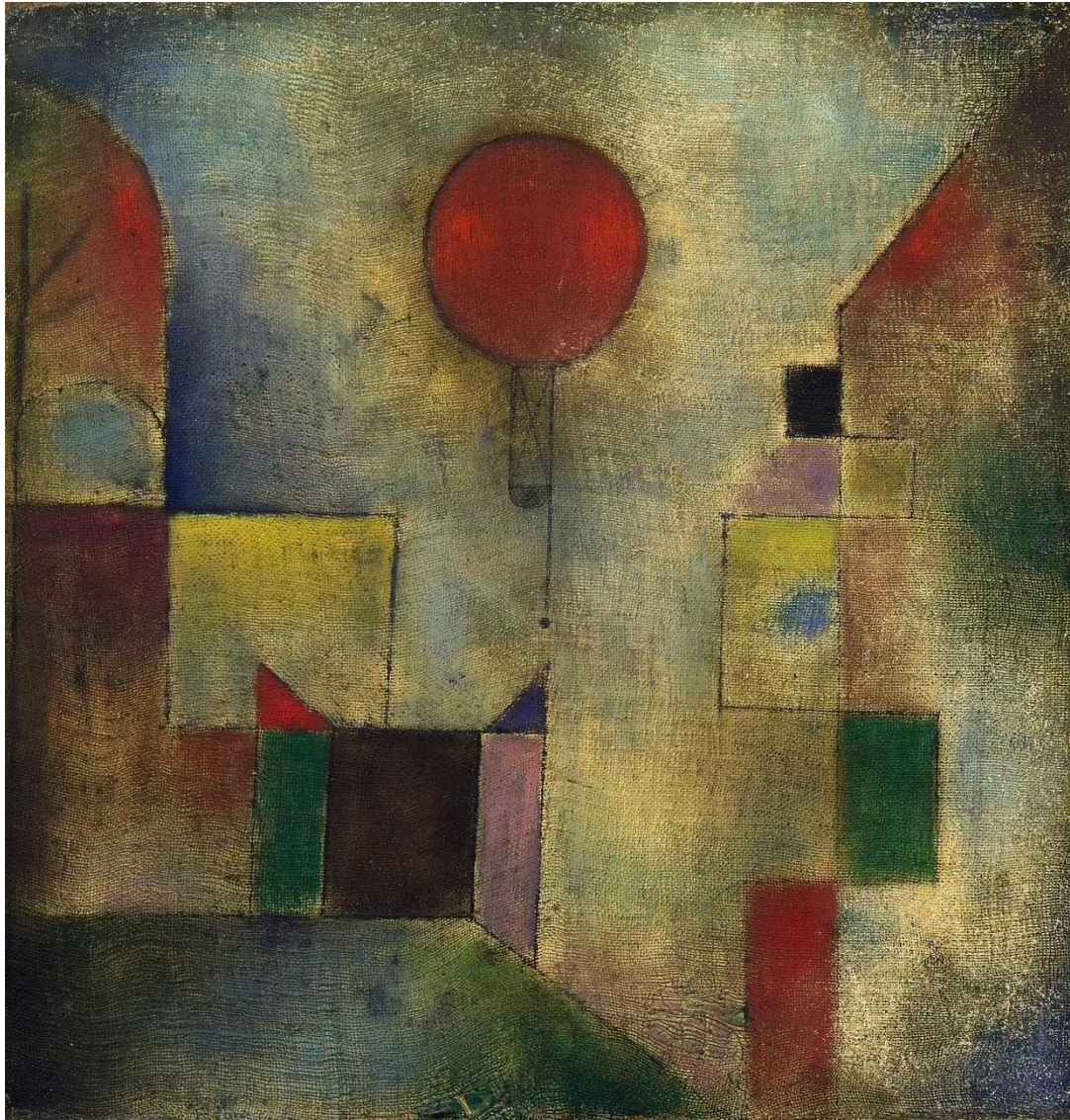
# Grade 1 – Castle and Sun



Shape



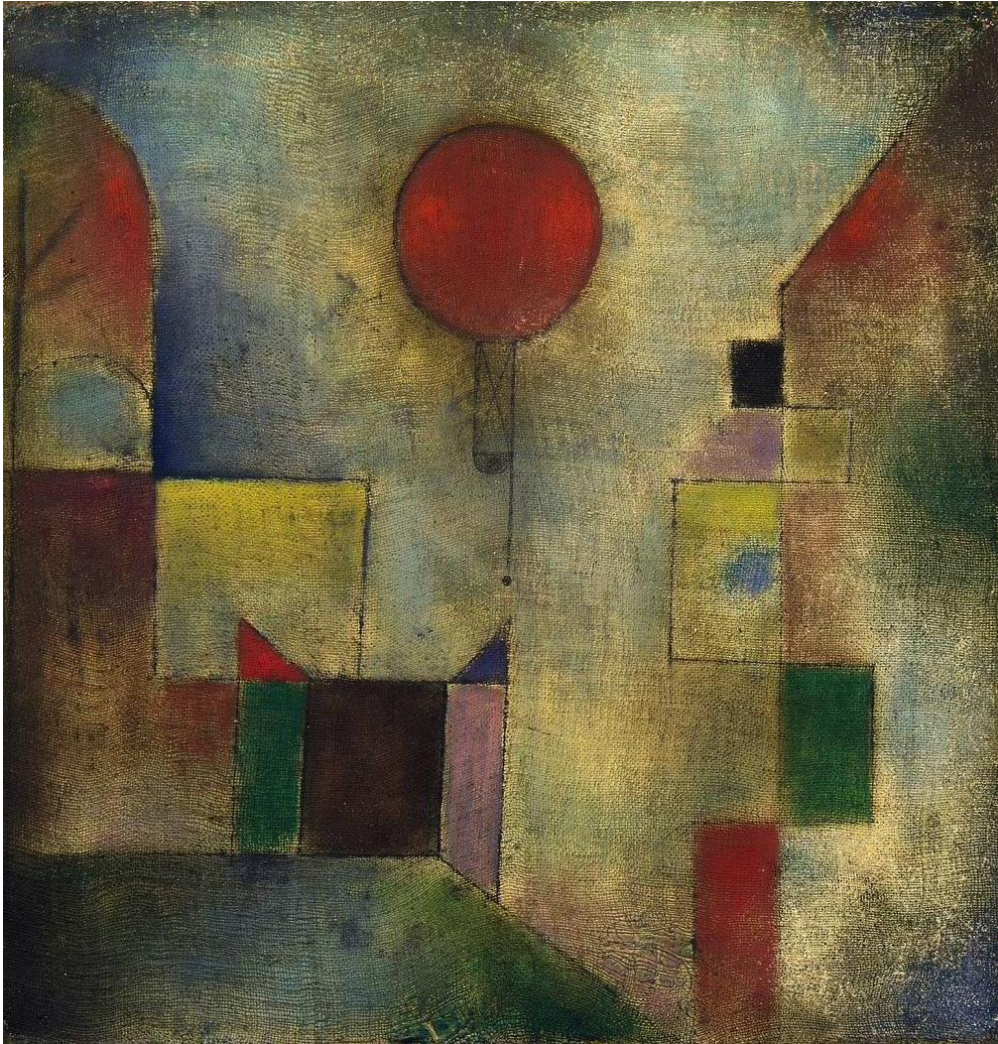
What do you see?



Red Balloon, 1922, Klee



# Artistic Focus: Shape



Red Balloon, 1922, Klee

**SHAPE** is a closed space made when a line connects to itself.

Today's objective:

1. To construct a 2-D building using different shapes
2. To balance the placement of a variety of colors

## **WA State Visual Arts Standard**

Explore uses of materials and tools to create works of art or design. (VA: Cr2.1.1)

# Paul Klee

- Paul Klee was born in Switzerland and lived from 1879 to 1940.
- Klee grew up in a musical family.
- He was a teacher, musician, writer, architect and artist.
- His artwork showed his humor, moods, beliefs, music and sometimes his childlike side.
- Music inspired his art. Klee used lines, patterns, and colors to show rhythm and movement in his paintings.
- Klee admired the art of children. He wanted his pictures to look simple, as if a child had made them.





# Artwork



Heroische Rosen (*Heroic Roses*), 1938, Klee

# Artwork



Senecio, 1922, Klee



# Artwork



Castle and Sun, 1928, Klee

# Example of Today's Project





# Materials

Construction Paper Crayons



Pencil



Black 9x12  
Construction Paper



Shape Templates



# Before You Begin

1. Write your **name** in pencil on the **back** of the paper.
2. Flip over your paper.
3. Put your paper in landscape/horizontal position.
4. **Roll up your sleeves!**

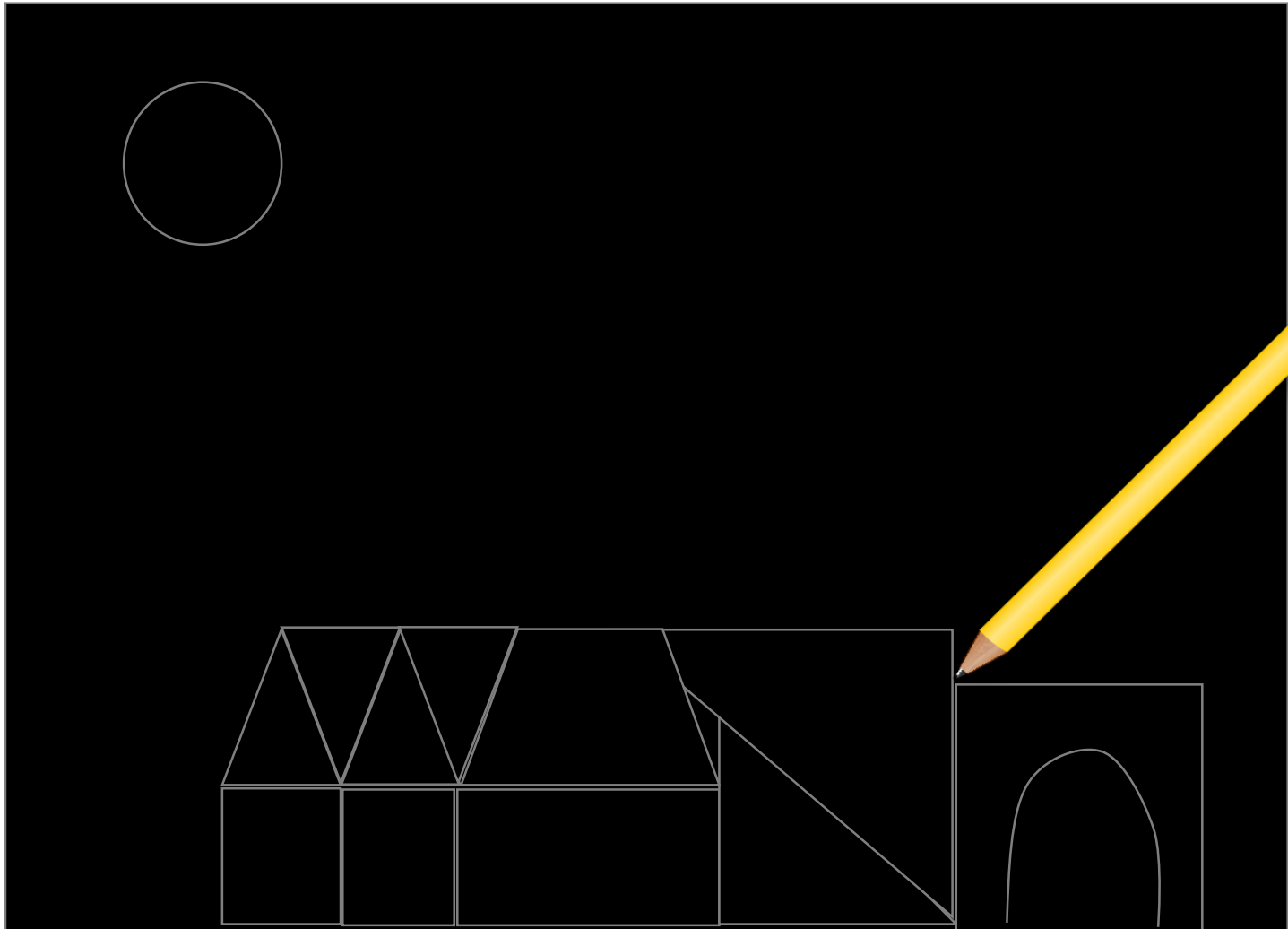


Aiden



# Step 1

- With a pencil, draw a circle for the sun near the top of your paper
- Start at the bottom by tracing different shapes to build your castle or building



## Step 2

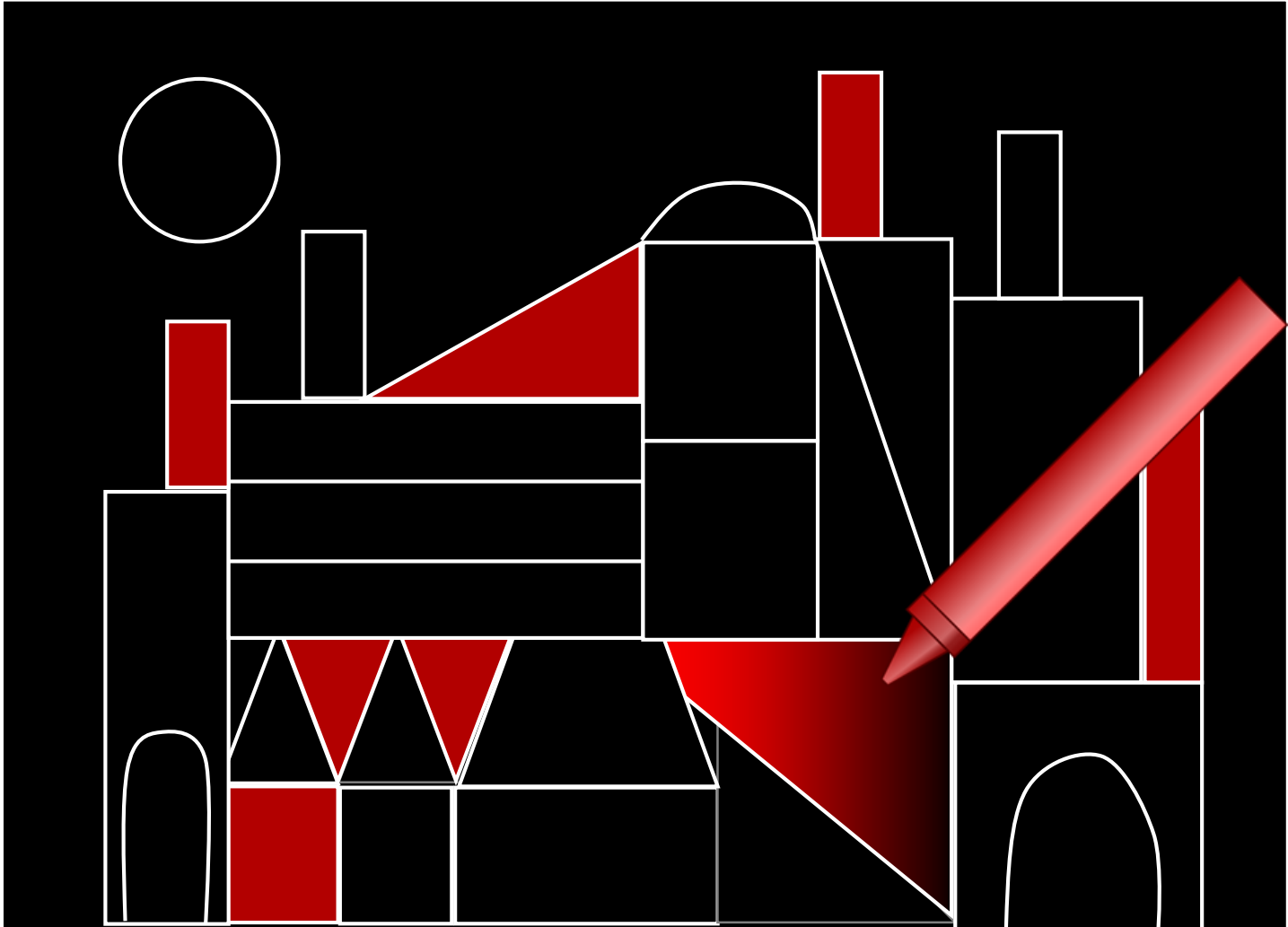
- After you've drawn your shapes, go over the lines with a white crayon.





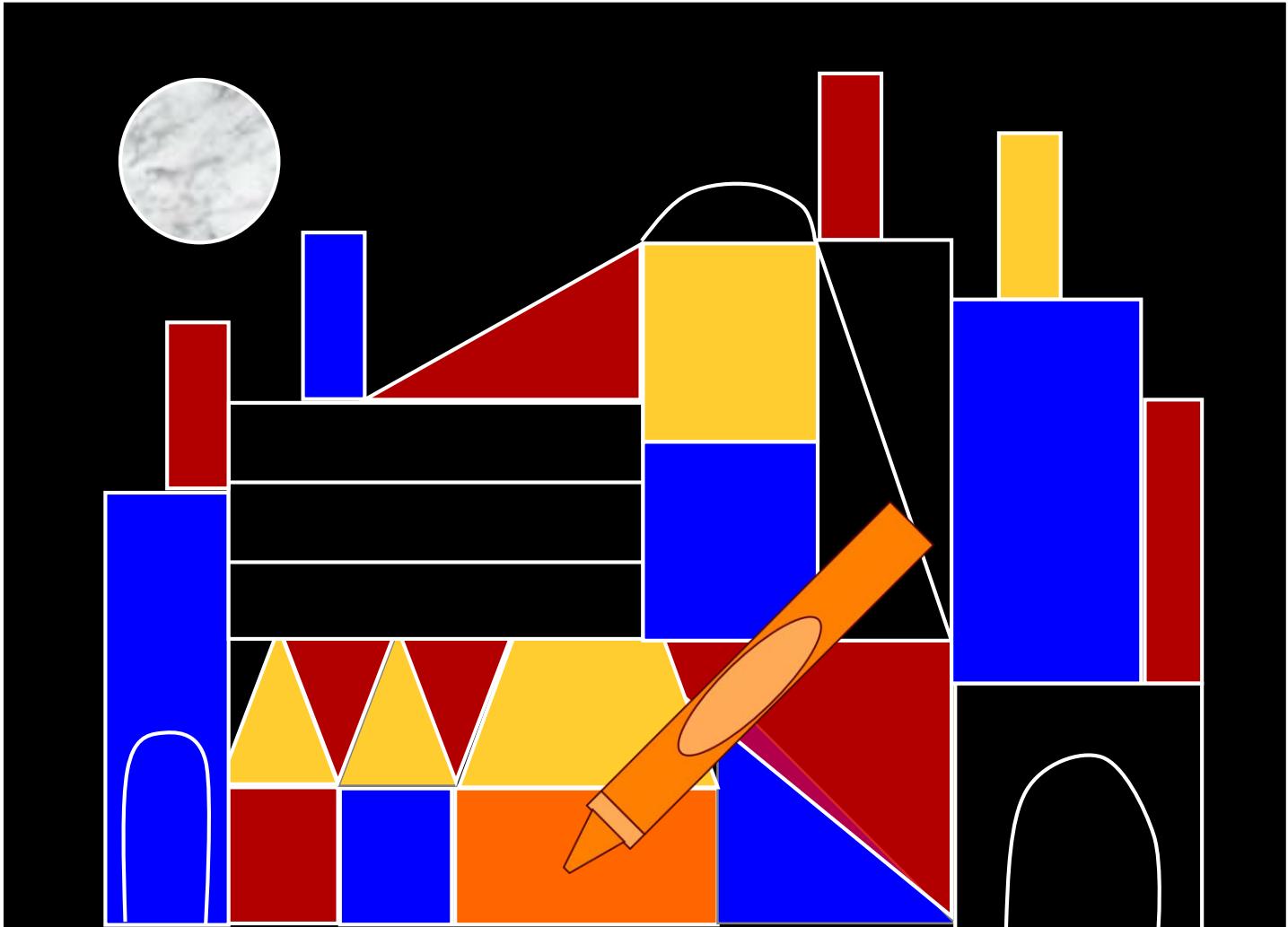
## Step 3

- Choose one color and start coloring shapes in different parts of the castle.
- To create balance, make sure neighboring shapes are different colors.



## Step 3 continue

- Continue coloring in the different shapes with a variety of colors.
- Remember to create balance by making sure neighboring shapes are different colors.





# Reflection

- Does your colorful castle remind you of a place from a story or somewhere else you have visited?
- What did you think of using white crayons on black paper to construct castle of shapes?
- How did you use color in your picture to create balance?
- What was your favorite part of our project today?
- Would anyone like to share their art?



# Credits

1. [https://en.wikipedia.org/wiki/Paul\\_Klee](https://en.wikipedia.org/wiki/Paul_Klee)
2. [http://www.artinthepicture.com/paintings/paul\\_klee/castle-and-sun/](http://www.artinthepicture.com/paintings/paul_klee/castle-and-sun/)
3. Original LWSD sample, used with permission.



The development of this Lake Washington School District art docent lesson was made possible by a grant from the Lake Washington Schools Foundation.

