

# COLLEGE & CAREER READINESS TASK FORCE UPDATE

# Our Mission

2

Each student will **graduate** prepared to lead a rewarding responsible life as a contributing member of our community and greater society



# Our Vision

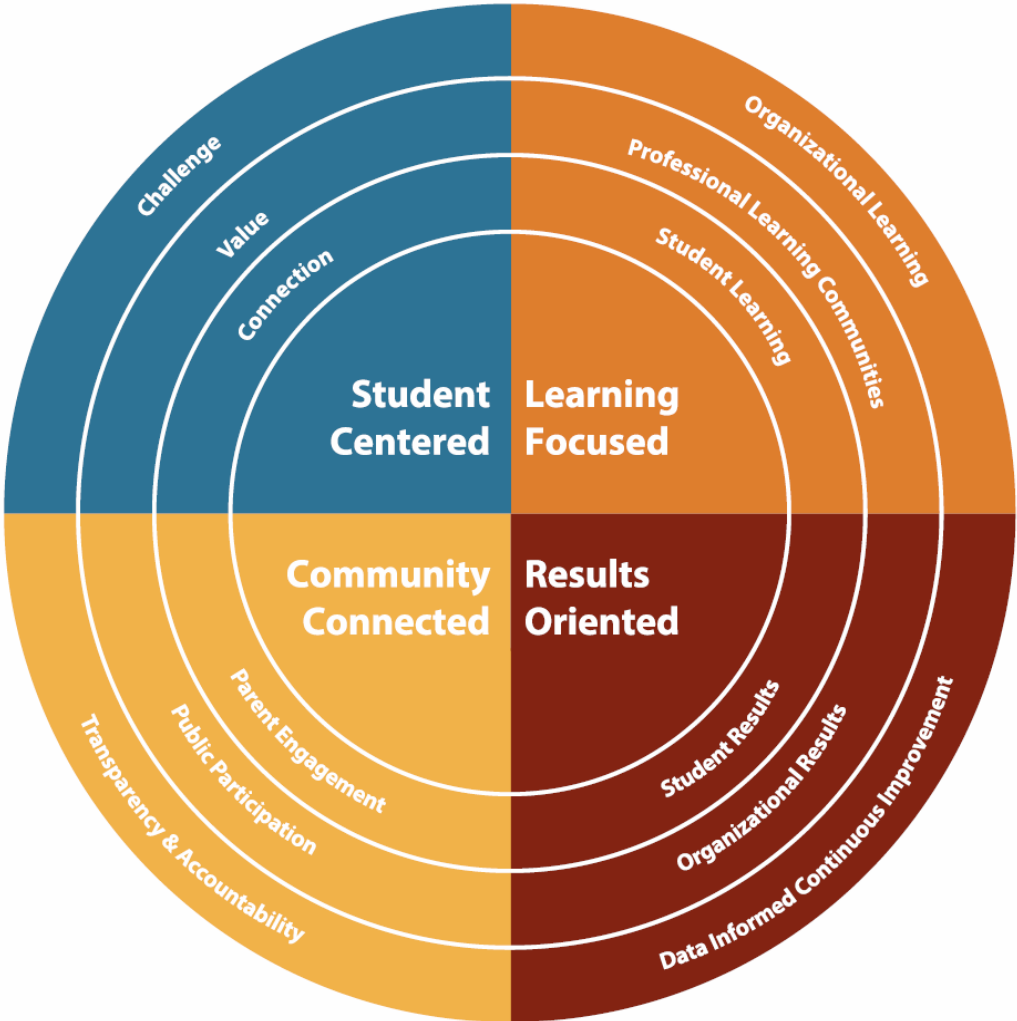
3

## Every Student Future Ready:

- *Prepared for College*
- *Prepared for the Global Workplace*
- *Prepared for Personal Success*



# Our Values



# Strategic Goals

5



**1 Ensure academic success for every student**



**2 Provide safe & innovative learning environments**



**3 Recruit, hire & retain highly effective personnel**



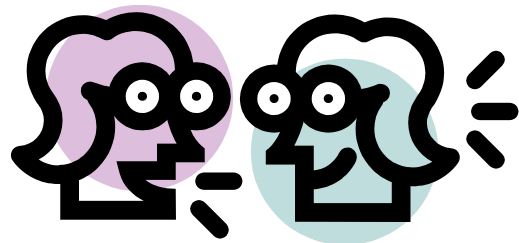
**4 Use resources effectively & be fiscally responsible**



**5 Engage our communities**

# Work/Study Session Purpose

6



 Discussion



Decision



 Information



Direction

# Policy Considerations/Key Questions

7

1. What is the current status of the College & Career Readiness Task Force, including Task Force schedule options under consideration?
2. What strategies are we using to engage stakeholders in the next steps?
3. What is the work ahead?

8

# Current status



# Task Force Purpose

- In March, 2015, we convened a College and Career Readiness Task Force, composed of teachers, principals, parents, and administrators. The purpose of the Task Force is to:
  - ▣ Study, analyze and make recommendations regarding impacts of the new state 24 credit requirement and the potential for a 7 period day for grades 9-12 or other creative ways to expand options for 9-12;
  - ▣ Study and analyze school schedule and start time implications.

# Task Force Tasks

- Review the impacts of the new state 24 credit graduation requirement policies that start with the Class of 2019 and beyond
- Review neighboring school districts' high school schedules and their work done to date on this topic
- Analyze the pros and cons for a 7 period day by researching districts that have implemented a 7 period day
- Review and analyze other ways to expand options for grades 9-12
- Study and analyze school schedule and start time implications
- Conduct community engagement processes to inform the group's work and to ensure an understanding of the larger community's desires and priorities
- Develop options, solicit feedback and refine options

# Trimester Schedule

11

- Maintain the length of the current school day
- School year divided into 3 trimester periods
- 1 trimester = 12 weeks
- Students take five classes per trimester
- Depending on schedule variation, classes range from 65 minutes to 90-minute blocks
- 1 trimester course = .5 credit
- 1 credit = 124-128 hours
- Available slots over 4 years = 30 slots
- Credit requirements must increase

## One variation only:

Monday	Tuesday	Wednesday	Thursday	Friday
<b>1<sup>st</sup> Trimester</b>				
1	1	1	1	1
2	2	2	2	2
3	3	3	3	3
4	4	4	4	4
5	5	5	5	5
<b>2<sup>nd</sup> Trimester</b>				
1	1	1	1	1
2	2	2	2	2
3	3	3	3	3
4	4	4	4	4
5	5	5	5	5
<b>3<sup>rd</sup> Trimester</b>				
1	1	1	1	1
2	2	2	2	2
3	3	3	3	3
4	4	4	4	4
5	5	5	5	5

- Number of classes students take at one time are fewer than in a semester model
- More options for electives and credit retrieval
- Allows for creativity with “just in time” credit retrieval
- Allows for extended blocks of instructional time – for block classes
- Maintains the continuity of course pathways

# Trimester model:

## Engagement and Feedback

12

- Community meetings
  - ▣ Late October and early November
  - ▣ Four community meetings in each high school
  - ▣ Participants engaged in small group table discussion
  - ▣ Task force members listened and took notes at table groups
- Online survey
  - ▣ Open from October 19 through November 4
  - ▣ K-12 parents and 6-12 students
  - ▣ Over 2000 individuals took the survey
  - ▣ Hanover Research analyzed survey feedback

# Hanover Report: Analysis

- Two key interests that our constituents want to see in a high school schedule:
  - 1) Provide adequate instructional hours per credit to ensure sufficient time for teachers to teach and students to learn the content/curriculum; and,
  - 2) Schedule classes to ensure continuity of learning and retention of content across the school year
- These two key interests were also evident in Listening Session feedback we heard last year regarding other schedule models under Task Force consideration

# Schedule Options: Refinement

14

- Using a combination of Task Force interests, parameters, and the interests expressed by constituents in meetings and online surveys, district staff provided the Task force with an adjusted list of all the schedule models under consideration using three criteria to make them viable for us to continue considering further

# 3 Criteria Provided to Task Force

- 1) Adequate instructional hours per credit: Our current range is between 143-150 hours per credit. To be a viable model, we used the criteria that the model needed to provide at least 130 hours per credit. This represents about a 10% reduction in our current instructional hour range.
- 2) Time for homeroom/tutorial: This has been a consistent and important feature expressed in our Task force meetings, and was also present in the report feedback. Except for TESLA STEM High school, the current range is between 105-140 minutes per week for homeroom/tutorial. Though not required to offer 100 minutes/week, we built this time allocation into each of the adjusted schedule models, which provides a common way to compare models.
- 3) Financial viability: As discussed throughout our Task Force meetings, estimating what our general fund can sustain is challenging in large part to many budget unknowns. Among other things, we have yet to know the impact of the McCleary decision on our district budget. To help us move forward, we determined that the cost of a schedule model should be targeted not to exceed \$7 million.

# Option Refinement & Prioritization

College & Career Readiness Task Force  
 Option Refinement & Prioritization – Options Adjusted for Viability  
 December, 2016

Options	Cost not to exceed 7 million	At least 130 hours per credit	Total Credits	Add Time	Homeroom/Tutorial	Transportation viability	Impact on Start time
<b>Option #1B: 7<sup>th</sup> period</b> Expand 9-12 school day by 60 minutes/day, creating a 7 <sup>th</sup> period at 9-12; Teachers teach periods 1-6 or 2-7, flex	\$5.2	150	28	60 min/day	100 min/week	?	?
<b>Option #3A: 7<sup>th</sup> period</b> Expand 9-12 High School day by 30 minutes/day, creating a 7 <sup>th</sup> period for high school only	\$6.9	135	28	25 min/day	100 min/week	?	?
<b>Option #5B: 7<sup>th</sup> period</b> Expand 9-12 school day by 15 minutes/day, and have a 6 period block schedule and 7 <sup>th</sup> period at end of day	\$6.3	130	26	15 min/day (9-12 only)	100 min/week	?	?
<b>Option #6: Expand 0 and 7 periods w/transp.</b> Maintain length of school day and expand 0 and 7 <sup>th</sup> period options at high school, with transportation provided	\$1.6	143-150	24-28	No	100 min/week	Yes	?
<b>Option #8: 4 x 8</b> Maintain length of school day, implement 4 x 8 block schedule (for 9-12 only) (8 classes/year, alternating days schedule)	\$6.8	130	32	45 min/day (9-12 only)	100 min/week	?	?

Task force meeting, Dec. 8, 2016



# Further Viability Analysis

17

- District staff evaluated the rank-ordered schedule options from December Task force meeting for:
  - Transportation system viability and costs
  - Start and dismissal time implications
    - Under current model

	<b>Elementary</b>	<b>Middle</b>	<b>High</b>
Start Time	8:30 – 9:00 a.m.	7:40 – 8:15 a.m.	7:30 – 7:50 a.m. (8:00 LWHS on Metro)
Dismiss Time	3:00 – 3:30 p.m.	2:10 – 2:45 p.m.	2:00 – 2:20 p.m.

- Under later high school start model

# Later High School Start Times: Neighbor District Comparisons

18

District		Elementary	Middle	High School
Bellevue (2016-17)	Start Time	8:05 – 9:05 a.m.	7:45 – 8:38 a.m.	8:30 a.m.
	Dismiss Time	2:30 -3:30 p.m.	2:35 – 3:30 p.m.	3:30 p.m.  (all Metro)
Issaquah (2017-18)	Start Time	8:55 - 9:10 a.m.	8:10 a.m.	8:00 a.m.
	Dismiss Time	3:20 - 3:35 p.m.	2:35 p.m.	2:52 p.m.
Northshore (2017-18)	Start Time	9:00 – 9:35 a.m.	8:25 a.m.	7:45 – 8:00 a.m.
	Dismiss Time	3:25 – 4:05 p.m.	3:00 p.m.	2:20 – 2:30 p.m.

# Further Viability Analysis

19

- District staff evaluated the rank-ordered schedule options from December Task force meeting for:
  - Transportation system viability and costs
  - Start and dismissal time implications
    - Under current model

	Elementary	Middle	High
Start Time	8:30 – 9:00 a.m.	7:40 – 8:15 a.m.	7:30 – 7:50 a.m.  • (8:00 LWHS on Metro)
Dismiss Time	3:00 – 3:30 p.m.	2:10 – 2:45 p.m.	2:00 – 2:20 p.m.

- Under later high school start model
  - High school start time no earlier than 7:45
  - High school dismissal time no later than 3:00 p.m.
  - Elementary dismissal no later than 4:00 p.m.

20

## Schedules under current consideration

# Schedule Option 3A: 7<sup>th</sup> period

## Add 25 minutes to High School Day

21

- Schedule Benefits/Opportunities
  - ▣ Creates a 7<sup>th</sup> period
  - ▣ Provides students the chance to earn 28 total credits over 4 years
  - ▣ Provides for 135 instructional hours per credit
  - ▣ Provides schools with the flexibility to include up to 100 minutes of homeroom/tutorial time in the weekly schedule

# Schedule Option 3A: 7<sup>th</sup> period

## Add 25 minutes to High School Day

22

		<b>Impact of adding 25 minutes to high school</b>	<b>Impact with applying later high school start time</b>
Elementary	start	9:00 am – 9:30 am	8:15 am – 9:30 am
	dismiss	3:30 pm – 4:00 pm	2:45 pm – 4:00 pm
Middle	start	8:10 am – 8:45 am	8:45 am
	dismiss	2:40 pm – 3:15 pm	3:15 pm
High School	start	7:30 am – 7:50 am	7:45 am
	dismiss	2:25 pm – 2:45 pm	2:40 pm

Impact of adding 25 minutes to high school:

- Elementary schools start and end between 0-60 minutes later than currently
- Middle schools start and end between 30-65 minutes later than currently

Impact with applying later high school start time

- Elementary schools start and end between 15-60 minutes later than currently
- Middle schools start and end between 30-65 minutes later than currently
- No major transportation costs

# Schedule Option 5B: 7<sup>th</sup> period Block

## Add 15 minutes to High School Day

23

- Schedule Benefits/Opportunities
  - Creates a 7<sup>th</sup> period
  - Provides students the chance to earn 28 total credits over 4 years
  - Provides for 130 instructional hours per credit
  - Provides schools with the flexibility to include up to 100 minutes of homeroom/tutorial time in the weekly schedule
  - Requires a block schedule configuration to meet instructional hour parameter

# Schedule Option 5B: 7<sup>th</sup> period Block

## Add 15 minutes to High School Day

24

		<b>Impact of adding 15 minutes to high school</b>	<b>Impact with applying later high school start time</b>
Elementary	start	8:45 am – 9:15 am	9:00 am – 9:30 am
	dismiss	3:15 pm – 3:45 pm	3:30 pm – 4:00 pm
Middle	start	7:55 am – 8:30 am	8:10 am – 8:45 am
	dismiss	2:25 pm – 3:00 pm	2:40 pm – 3:15 pm
High School	start	7:30 am – 7:50 am	7:45 am
	dismiss	2:15 pm – 2:35 pm	2:30 pm

With current high school start time

- Elementary schools start and end between 15-45 minutes later than currently

With potential later high school start time

- Elementary schools start and end between 0-60 minutes later than currently
- Middle schools start and end between 5-65 minutes later than currently
- No major transportation costs



# Schedule Option 6: Expand 7 period options and provide transportation, add 0 minutes to High School Day

25

- Schedule Benefits/Opportunities
  - ▣ Provides for a baseline 6 period day
  - ▣ Expands 7 period course options for all interested students
  - ▣ Provides an activity bus for students taking a 7<sup>th</sup> period
  - ▣ Provides students the chance to earn 28 total credits over 4 years
  - ▣ Provides for 143-150 instructional hours per credit
  - ▣ Provides schools with the flexibility to include up to 100 minutes of homeroom/tutorial time in the weekly schedule

# Schedule Option 6: Expand 7 period options and provide transportation, add 0 minutes to High School Day

26

		Impact of adding 0 minutes to high school	Impact with applying later high school start time
Elementary	start	8:30 am – 9:00 am	8:45 am – 9:15 am
	dismiss	3:00 pm – 3:30 pm	3:15 pm – 3:45 pm
Middle	start	7:40 am – 8:15 am	7:55 am – 8:30 am
	dismiss	2:10 pm – 2:45 pm	2:25 pm – 3:00 pm
High School	start	7:30 am – 7:50 am	7:45 am
	dismiss	2:00 pm – 2:20 pm	2:15 pm

With current high school start time

- Elementary and middle school start and end times are the same as currently

With potential later high school start time

- Elementary schools start and end between 15-45 minutes later than currently
- Middle schools start and end between 15-50 minutes later than currently
- Minor transportation costs

# Schedule Option 9: 3x5 trimester

## Add 30 minutes to High School Day

27

- Schedule Benefits/Opportunities
  - ▣ Provides for a 3x5 trimester schedule
  - ▣ Provides students the chance to earn 30 total credits over 4 years
  - ▣ Provides for 130 instructional hours per credit
  - ▣ Provides schools with the flexibility to include up to 100 minutes of homeroom/tutorial time in the weekly schedule

# Schedule Option 9: 3x5 trimester

## Add 30 minutes to High School Day

28

		Impact of adding 30 minutes to high school	Impact with applying later high school start time
Elementary	start	9:00 am – 9:30 am	8:15 am – 9:30 am
	dismiss	3:30 pm – 4:00 pm	2:45 pm – 4:00 pm
Middle	start	8:10 am – 8:45 am	8:45 am
	dismiss	2:40 pm – 3:15 pm	3:15 pm
High School	start	7:30 am – 7:50 am	7:45 am
	dismiss	2:30 pm – 2:50 pm	2:45 pm

### With current high school start time

- Elementary schools start and end between 0-60 minutes later than currently
- Middle schools start and end between 30-65 minutes later than currently

### With potential later high school start time

- Elementary schools start and end between 15-60 minutes later than currently
- Middle schools start and end between 30-65 minutes later than currently
- No major transportation costs

# Schedule Option 4: 6.5 period day

## Add 15 minutes to K-12 School Day

29

- Schedule Benefits/Opportunities
  - ▣ Provides an additional 15 minutes per day at all levels, K-12
  - ▣ Provides for 6 periods and an additional .5 period per day
  - ▣ Provides students the chance to earn 26 total credits over 4 years (.5 additional each year)
  - ▣ Provides for 139 instructional hours per credit
  - ▣ Provides schools with the flexibility to include up to 100 minutes of homeroom/tutorial time in the weekly schedule

# Schedule Option 4: 6.5 period day

## Add 15 minutes to K-12 School Day

30

		Impact of adding 15 minutes K-12	Impact with applying later high school start time
Elementary	start	8:30 am – 9:00 am	8:45 am – 9:15 am
	dismiss	3:15 pm – 3:45 pm	3:30 pm – 4:00 pm
Middle	start	7:40 am – 8:15 am	7:55 am – 8:30 am
	dismiss	2:25 pm – 3:00 pm	2:40 pm – 3:15 pm
High School	start	7:30 am – 7:50 am	7:45 am
	dismiss	2:15 pm – 2:35 pm	2:30 pm

With current high school start time

- Elementary schools start and end between 0-30 minutes later than currently
- Middle schools start and end between 0-30 minutes later than currently

With potential later high school start time

- Elementary schools start and end between 15-45 minutes later than currently
- Middle schools start and end between 15-40 minutes later than currently
- No major transportation costs

# Schedule Option 1 B: 7<sup>th</sup> period

## Add 60 minutes to High School Day

31

- Schedule Barriers:
  - In order to meet the later high school start time model, it would require 30 additional busses and operating expenses totaling approximately \$5.3 million
  - With transportation costs, exceeds the financial viability criteria
- Not viable

# Schedule Option 8: 4x8 Block

## Add 45 minutes to High School Day

32

- Schedule Barriers:
  - ▣ In order to meet the later high school start time model, it would require 30 additional busses and operating expenses totaling approximately \$5.3 million
  - ▣ With transportation costs, exceeds the financial viability criteria
- To Become Viable:
  - ▣ Reduce addition of time to 25 minutes and eliminate homeroom



# Schedule Option 8A: 4x4 Block

## Add 45 minutes to High School Day

33

- Schedule Barriers:
  - ▣ In order to meet the later high school start time model, it would require 30 additional busses and operating expenses totaling approximately \$5.3 million
  - ▣ With transportation costs, exceeds the financial viability criteria
- To Become Viable:
  - ▣ Reduce addition of time to 25 minutes and eliminate homeroom

34

# The Work Ahead

# Process & Timeline – Next Steps

<b>January, 2017</b>	<b>February, 2017</b>	<b>March – April, 2017</b>
<ul style="list-style-type: none"><li>• District staff evaluated prioritized schedule options for transportation system viability and costs and start and dismissal time implications</li><li>• Task force identifies top 3 options at January 26<sup>th</sup> meeting</li></ul>	<ul style="list-style-type: none"><li>• Awareness building and communication with K-12 staff, parents, and students using informational videos</li><li>• Task force gathers feedback from K-12 staff and parents and 9-12 students on 3 schedule/start time options using videos and online surveys</li></ul>	<ul style="list-style-type: none"><li>• Task force considers staff, parents, and student feedback and makes recommendation</li><li>• Task force communicates recommendation to staff, students, and parents</li><li>• District staff explores financial feasibility and impacts of recommendation</li></ul>