

# Board Study Session:

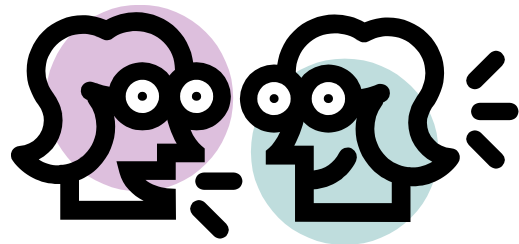
Boundary Process Update



December 5, 2016

# Work/Study Session Purpose

2



 Discussion



Decision



 Information



 Direction

# Key Questions

3

- What policy and law inform the work of redrawing school attendance areas?
- What are the goals of the boundary process?
- What is the timeline for the boundary process?
- What strategies will be used to complete the boundary process?
- What are the key decision points?
- What are the anticipated challenges?

# Session Overview

4

- Policy and Law
- Tasks, Goals and Timelines
- Process Strategies
  - ▣ Process improvements to be implemented
  - ▣ Staff working committee
  - ▣ Communication & community engagement
- Key Decision Points & Anticipated Challenges
- Discussion

# Our Mission

Each student will **graduate** prepared to lead a rewarding responsible life as a contributing member of our community and greater society



# Our Vision

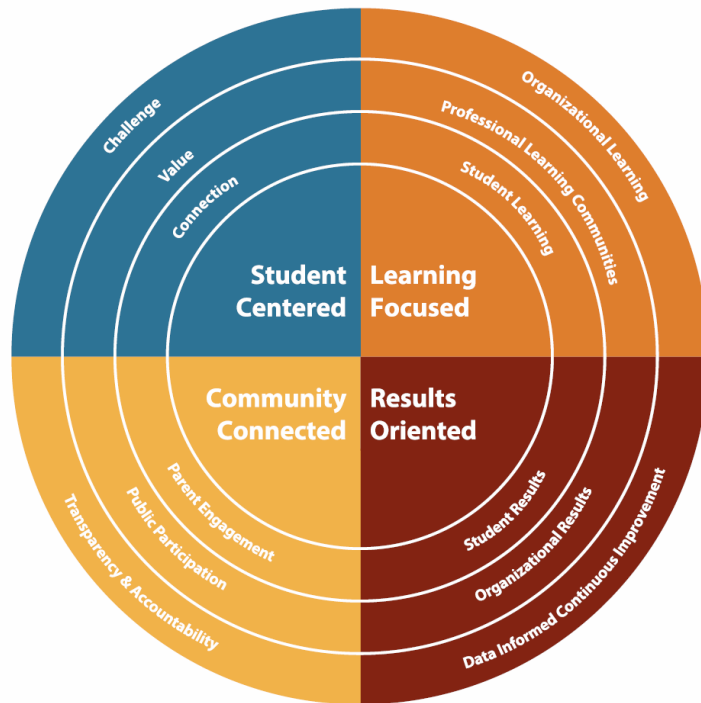
## Every Student Future Ready:

- *Prepared for College*
- *Prepared for the Global Workplace*
- *Prepared for Personal Success*



# Achieving our Mission and Vision

## Values



## Goals

- 1 Ensure academic success for every student
- 2 Provide safe & innovative learning environments
- 3 Recruit, hire & retain highly effective personnel
- 4 Use resources effectively & be fiscally responsible
- 5 Engage our communities



# Policy and Law



# LWSD Administrative Policy: JC

## **School Attendance Areas**

---

*File: JC*

The superintendent shall recommend attendance area configurations to the Board of Directors. Such configurations shall include but not be limited to a socio-economic impact statement relating to the area under consideration. Attendance variances may be approved by the superintendent or designee.

# LWSD Governance Policy: EL-3

## **Communication & Counsel to the Board**

---

***Policy Type: Executive Limitations***

***Policy Code: EL-3***

With respect to providing information and counsel to the Board, the CEO shall give the Board as much information as necessary to allow Board members to be adequately informed.

Accordingly, the CEO shall:

13. Recommend for Board approval school attendance boundaries that consider the impacts on families' continuity with their school and community, and are appropriate to the effective and efficient operation of the district.

# WAC 392-342-025 Racial imbalance prohibition

## **Racial imbalance prohibition—Definition and acceptance criteria.**

The superintendent of public instruction shall not accept a site unless the applicant district provides assurances that its attendance policies for the proposed or modernized school facility will not create or aggravate racial imbalance within the boundaries of the applicant school district. For the purpose of this chapter, racial imbalance shall be defined as the situation that exists when minority enrollment (as defined by current federal categories) of a school plant facility is as follows:



# Tasks, Goals and Timeline

# Task

- Analyze the attendance areas of the schools possibly affected by new schools and current/potential overcrowding:

Elementary	Middle School
Alcott Elementary	Redmond Middle School
Dickinson Elementary	Evergreen Middle School
Einstein Elementary	New Middle School – Redmond Ridge
Mann Elementary	
Redmond Elementary	High School
Rockwell Elementary	Eastlake High School
Rosa Parks Elementary	Redmond High School
Wilder Elementary	
New Elementary – North Redmond	
New Elementary – Redmond Ridge East	

# Product Goal

- Develop a final recommendation that provides necessary changes to school attendance areas in order to:
  - ▣ Redistribute students to existing schools
  - ▣ Draw attendance boundaries for new schools
  - ▣ Place district programs and choice schools

# Process Goal

- Ensure a clear and transparent process is used:
  - ▣ Ensure authentic community engagement opportunities are provided throughout the process
  - ▣ Develop ongoing communication strategy to keep community and staff informed about the process and opportunities for engagement

# 2014-15 Timeline

## Process Timeline



- **September:**
  - Communication and Criteria Feedback
- **October:**
  - Committee review of data and development of options/initial scenarios
- **November:**
  - Review of data and revision of options/scenarios
- **December:**
  - Community Feedback Meetings
- **January: Refinement of options/scenarios**
  - Online community comment on two refined scenarios
  - Development of recommendation for the Superintendent including:
    - New attendance boundaries
    - Consideration of Elementary and Middle School "Grandfathering"



# 2017-18 Timeline

## □ **January-March:**

- Receive community feedback on boundary criteria
- Review data and relevant information
- Develop Draft Options

## □ **April:**

- Present Draft Options to School Board
- Receive Community Feedback on Draft Options

## □ **May-June:**

- Review community feedback
- Revise Draft Options

## □ **August-September:**

- Present Draft Options to School Board
- Receive Community Feedback on Draft Options

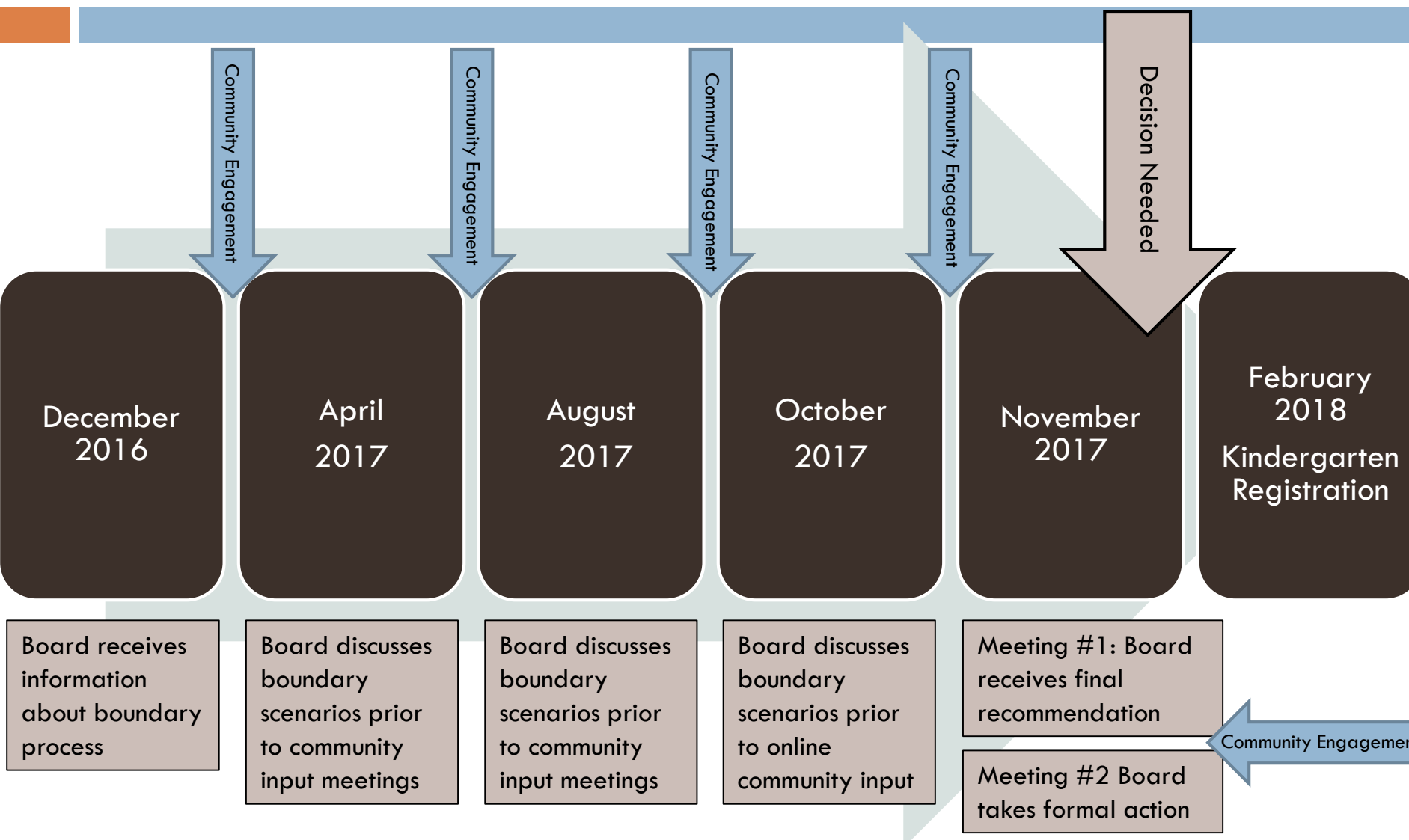
## □ **October:**

- Review community feedback
- Revise draft options
- Present draft options to school board
- Receive community feedback on draft options

## □ **November:**

- Review community feedback
- Develop final recommendation for Superintendent
- School board receives final recommendation from superintendent to consider taking action

# Board/Community Input Process Timeline





# Process Strategies

# Process Improvements to be Implemented

- Provide definitions about criteria terminology when asking for community feedback
- Provide public comment opportunity following final recommendation prior to Board action

# Staff working committee

Principals		District Leadership	
Redmond Middle School	Kelly Clapp	Associate Superintendent*	Dr. Jon Holmen
Evergreen Middle School	Robert Johnson	Assistant Superintendent	Barbara Posthumus
Redmond Elementary	Jen Jarta	Director, School Support, Eastlake	Dr. Matt Livingston
Mann Elementary	Megan Spaulding	Director, School Support, Redmond	Sue Anne Sullivan
Rockwell Elementary	Kirsten Gometz	Director, Communications	Kathryn Reith
Einstein Elementary	Robin Imai	Director, Support Services	Forrest Miller
Wilder Elementary	Steve Roetcisoender	Director, Special Services	Paul Vine
Rosa Parks Elementary	Kim Bilanko	Manager, Transportation	Jeff Miles
Dickinson Elementary	Karen Barker		
Alcott Elementary	Jon Hedin		

*\*Boundary Committee Facilitator*

# Communication & Community Engagement

## □ Communication

- Press Release
- Website
- Direct email communication
- FAQ
- Blog
- School newsletters

## □ Engagement Strategies

- Survey regarding criteria (January)
- In-person discussion and feedback about proposed boundary scenarios (May)
- In-person discussion and feedback about proposed boundary scenarios (September)
- Online feedback about proposed boundary scenarios (October)



# Key Decision Points and Anticipated Challenges

# Key Decision Points and Anticipated Challenges

## Decision Point:

- Scope of the boundary process

## Anticipated Challenge:

- Defining scope for internal and external stakeholders
- The potential for broadening scope during the process (e.g. Middle school adjustments in 2014-15 process)



# Key Decision Points and Anticipated Challenges

## Decision Point:

- Assumptions re:
  - ▣ Capacity
  - ▣ Scope of planning

## Anticipated Challenge:

- Current capacity is different from capacity assumption in long-term facility task force recommendations
- Scope aligns with long-term facility plan, which assumes future bond passage

# Key Decision Points and Anticipated Challenges

## Decision Point:

- How to best eliminate Evergreen split-feeder to Eastlake and Redmond High Schools

## Anticipated Challenge:

- Implications for which elementary schools feed into Evergreen
- Implications for middle school choice school placement in the Redmond area

# Key Decision Points and Anticipated Challenges

## Decision Point:

- How to best balance enrollment between Eastlake and Redmond High Schools

## Anticipated Challenge:

- Preliminary projections have Eastlake growing to 2,301 in the 2022-23 school year (+600 over current)
- Preliminary projections have Redmond growing to 1,824 in the 2022-23 school year (+46 over current)
- 2018 bond plan has a new choice high school or secondary school, which would reduce some enrollment
- With new 9-12 choice secondary school anticipated enrollment in 2022-23 is Eastlake 2,076 and Redmond 1,689

# Key Decision Points and Anticipated Challenges

## Decision Point:

- District-wide program placement

## Anticipated Challenge:

- Planning for Quest given new qualification criteria
  - ▣ Potential for students to be moved multiple times in elementary career

# Key Decision Points and Anticipated Challenges

## Decision Point:

- Final recommendation and decision

## Anticipated Challenge:

- How to best implement grandfathering
- All elementary schools will be near or over capacity when the boundary decision is implemented
- School proximities and irregular-shaped boundaries



# Discussion