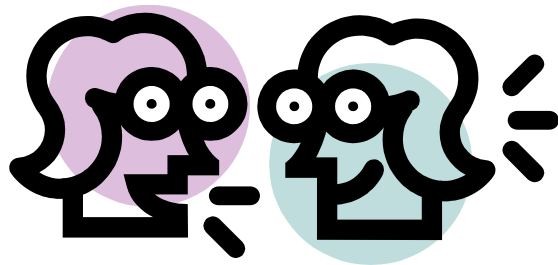


# Long Term Facility Planning Program Placement Process

# Work/Study Session Purpose

2



Discussion



Decision






 Information



Direction

# Strategic Goals

3

-  **1 Ensure academic success for every student**
-  **2 Provide safe & innovative learning environments**
- 3 Recruit, hire & retain highly effective personnel**
- 4 Use resources effectively & be fiscally responsible**
-  **5 Engage our communities**

# 4

## Facility Planning Program Placement Process



# Overview

5

- This study session includes:
  - Overview of 2016 Bond Project Status
  - Review of space planning considerations
  - Review of guiding principles to inform districtwide program placement
  - Next Steps

# Long-Term Facilities Planning

## Status of 2016 Bond Projects

Project	Current Status	Opening Date
Elementary at North Redmond	In Design Development	Fall 2018
Elementary at Redmond Ridge East	In Design Development	Fall 2018
Middle School at Redmond Ridge	In Design Development	Fall 2019
Rebuild and Expand Kirk Elementary	In Concept Design	Fall 2019
Rebuild and Expand Mead Elementary	In Concept Design	Fall 2019
Remodel Old Redmond School House for Preschool	Preschool Educational Specification development	Fall 2019
Rebuild and Expand Juanita High School	In Schematic Design	Fall 2021

# Community Engagement

- Recent community meetings:
  - Elementary at North Redmond
    - Thursday, September 22 at Redmond City Hall
    - Tuesday, September 27 at Redmond High School
  - Elementary at Redmond Ridge East
    - Monday, September 26 at Rosa Parks Elementary School
  - Middle School at Redmond Ridge
    - Monday, September 26 at Rosa Parks Elementary School
  - Juanita High School
    - Wednesday, September 28 at Juanita High School

# Community Engagement

8

- As we continue to engage our community we have developed branding for our Long-Term Facility Planning efforts





# What is “Building on Success”? (the one floor elevator speech)

We want to ensure that LWSD continues to be a high performing and successful school district. LWSD attracts many families and student enrollment is rapidly growing. Through community support and successful passage of levies and bonds, the district is “Building on Success,” which is the name for our long term plan to continue to build schools and provide quality learning environments and experiences for our growing number of students and families.

# What is “Building on Success”?

## (the high rise elevator speech)

We want to ensure that LWSD continues to be a high performing and successful school district. LWSD attracts many families and student enrollment is rapidly growing. Through community support and successful passage of levies and bonds, the district:

- Is currently building new schools and rebuilding and enlarging older schools
- Is implementing a long-term, community-developed plan to continue to build new and rebuild old schools to reduce overcrowding and accommodate growing enrollment
- Is improving student learning through investment in classroom resources and technology, and quality teachers and staff
- Is improving student safety and building and technology infrastructure through investment in capital projects

Building on Success describes Lake Washington’s ongoing efforts to build schools and provide quality learning environments and experiences for our growing number of students and families.

# Goals

- Reassure the community that the district is keeping the promises it made about the long-term facilities task force recommendations and the 2016 bond measure.
- Remind the community that the 2016 bond measure is part of a long-term, community-developed plan that involves bonds (and levies) in 2018, 2022, and 2026.
- Communicate appreciation to the community and provide them with regular and timely information about construction progress.
- Encourage public participation and engagement in planning processes.
- Demonstrate accountability and fiscal responsibility.

# Key Message



Lake Washington School District is building on the success of our students, staff and community to ensure all students can grow and thrive in our schools through wise investment of taxpayer dollars.



Lake Washington School District added 5 new photos.

4 hrs · 🌐

Bug gardens, covered play areas, koi ponds and windmills were among the features in designs created by architectural firms with names like Ice Cream Architects and Tiger Builders. On Sept. 30, parents and district administrators viewed Explorer Community School student designs for their new campus. Funding from the April 2016 bond measure will provide new modular buildings to house the school's classrooms.

The campus will house 75 students total. Explorer teachers used the new campus as a learning opportunity. Multi-age student teams in grades 1-5 developed their own designs for the new campus. They built scale models of those designs. Students and the adults reviewed the creations and provided feedback to the teams. Students also will follow the design process of their new school, which will open next fall.



# Future Planning Program Space Considerations

- Monitoring of assumptions used in Long-Term Facilities Planning Task Force Recommendations
  - ▣ Updated enrollment projections
  - ▣ Review of program space requirements
    - School based program space needs
      - Serve neighborhood school students
      - Special Education Resource Room, English Language Learner, and Safety Net services
    - District-wide programs
      - Serve students from across the district
      - Full-Time and Pull-out Quest, Special Education Transition and Intervention classrooms, and Preschool

# Review of program space considerations

15

- School based program space needs
  - ▣ Long-Term Facility Task Force recommendations

# Review of program space considerations

16

- District-wide programs
  - ▣ Proposed guiding principles for moving district-wide programs



# District-wide Program Moves

17

- When the district identifies the need to make changes to location for siting of districtwide program placements, the district will:
  - Consider the impact on families' continuity with their school and community and equity of program access;
  - Consider placements that are appropriate to school facilities and the effective and efficient operation of the district;
  - Consider length of time potential space will be available to maintain program placement continuity;
  - Proactively communicate rationale and decision for districtwide program placement moves with those affected:
    - Hold an in-person meeting with families affected;
    - Provide an opportunity for input if multiple alternative options exist for movement of a districtwide program; and,
    - Seek feedback to inform transition and support plans for relocation

# Program Placement and Boundary Process Relationship

18

## 2016-17 (non-boundary decision year)

Program Placement Process Occurs –  
Decisions are implemented for 2017-18  
school year.

## 2017-18 (boundary decision year)

Boundary Process Occurs –Program  
placements may be part of boundary  
scenarios. **Board approves boundary  
decisions.**

Program Placement Process Occurs –  
Decisions are implemented for 2018-19  
school year.



# Next Steps



# Next Steps:

## Program Placement Process

20

Next steps for planning will include:

- Develop updated enrollment projections and update school-based program space needs
- Determine districtwide program space needs
- Identify any potential districtwide program space moves that may be needed for 2016-17
- Complete process using guiding principles