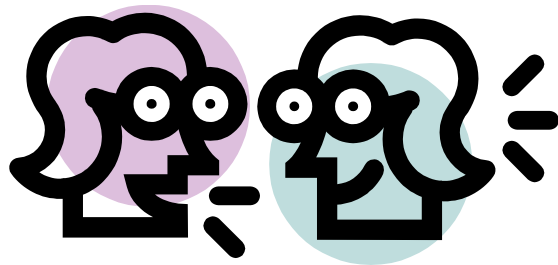


Board Roles & Responsibilities

Linkage Planning

Work/Study Session Purpose

2



Discussion



Decision



Information



Direction

Strategic Goals

3

- 1 Ensure academic success for every student**
- 2 Provide safe & innovative learning environments**
- 3 Recruit, hire & retain highly effective personnel**
- 4 Use resources effectively & be fiscally responsible**
- 5 Engage our communities**

Overview

4

- Continue discussion of Board roles and responsibilities from March extended study session
- Discuss upcoming November 21 Board linkage:
 - ▣ Focus
 - ▣ Structure/Process/Participants

5

Board Roles and Responsibilities

Issue Statement

6

- What are the roles of the Board, why do we have them, and how do we want to elect them?

Review of March Discussion

7

- Story
- Interests
- Options

8

Linkage Planning

Linkage Purpose

9

GP- 6

- Scheduled linkage discussions and consultations with selected groups and persons whose insights and opinions will be helpful to the Board

Linkage Focus: Special Education

10

Special Services Program Review 5 Year Action Plan:

- Service Delivery Models
- Curriculum, Assessment, and Instructional Supports/Assistive Technology
- Professional Development
- Resources
- Policy and Procedures
- Interdepartmental Considerations
- Parent and Family Engagement

Focus

Parent and Family Engagement

<u>Parent and Family Engagement:</u>	Urban Collaborative	WISM	CPR	Continuous Improvement
Communication resources and tools for students, families, and staff	3a	CE3		
Parent engagement at the district level	1d	CE3		X
Opportunities for feedback regarding Special Education and Section 504 programs and services for parents and families annually	1d			
Parent education resources and opportunities	1d			X
Community partnerships	1d, 4a			X

Proposed Structure/Process/Participants

12

- World Café
- 20 participants

What is the World Café?

As a **conversational process**, the World Café is an innovative yet simple methodology for **hosting conversations** about questions that matter. These conversations **link and build on each other** as people **move between groups**, cross-pollinate ideas, and discover **new insights** into the questions or issues that are most important in their life, work, or community. As a process, the World Café can evoke and make visible the **collective intelligence** of any group, thus increasing people's capacity for effective action in **pursuit of common aims**.

World Café Conversational Process

Café Design Principles



Café Etiquette

- **Focus** on what matters
- **Contribute** your thinking
- **Speak** your mind and heart
- **Listen** to understand
- **Link and connect** ideas
- **Listen together** for insights and deeper questions
- **Play, Doodle, Draw** – writing on the tablecloths is encouraged!

Proposed Structure/Process/Participants

16

- World Café
 - Board members serve as table hosts posing questions and facilitating small group discussion (5 per table, 4 tables – 20 total participants)
 - Groups mix and rotate through four rounds, so Board members hear from all participants
 - Questions focus on five action items associated with Parent and Family Engagement