

# Safety and Security

# Work/Study Session Purpose

2




Inform



Discuss

# Strategic Goals

3

- 1** Ensure academic success for every student
-  **2** Provide safe & innovative learning environments
- 3** Recruit, hire & retain highly effective personnel
-  **4** Use resources effectively & be fiscally responsible
- 5** Engage our communities

# Study Session Outline

4

- District Safety Structure
- Comprehensive Emergency Management Planning
- Security Department Update
- Partnerships
- SEL/Behavioral Health
- Facility Safety Upgrades
- Discussion



5

# District Safety Structure

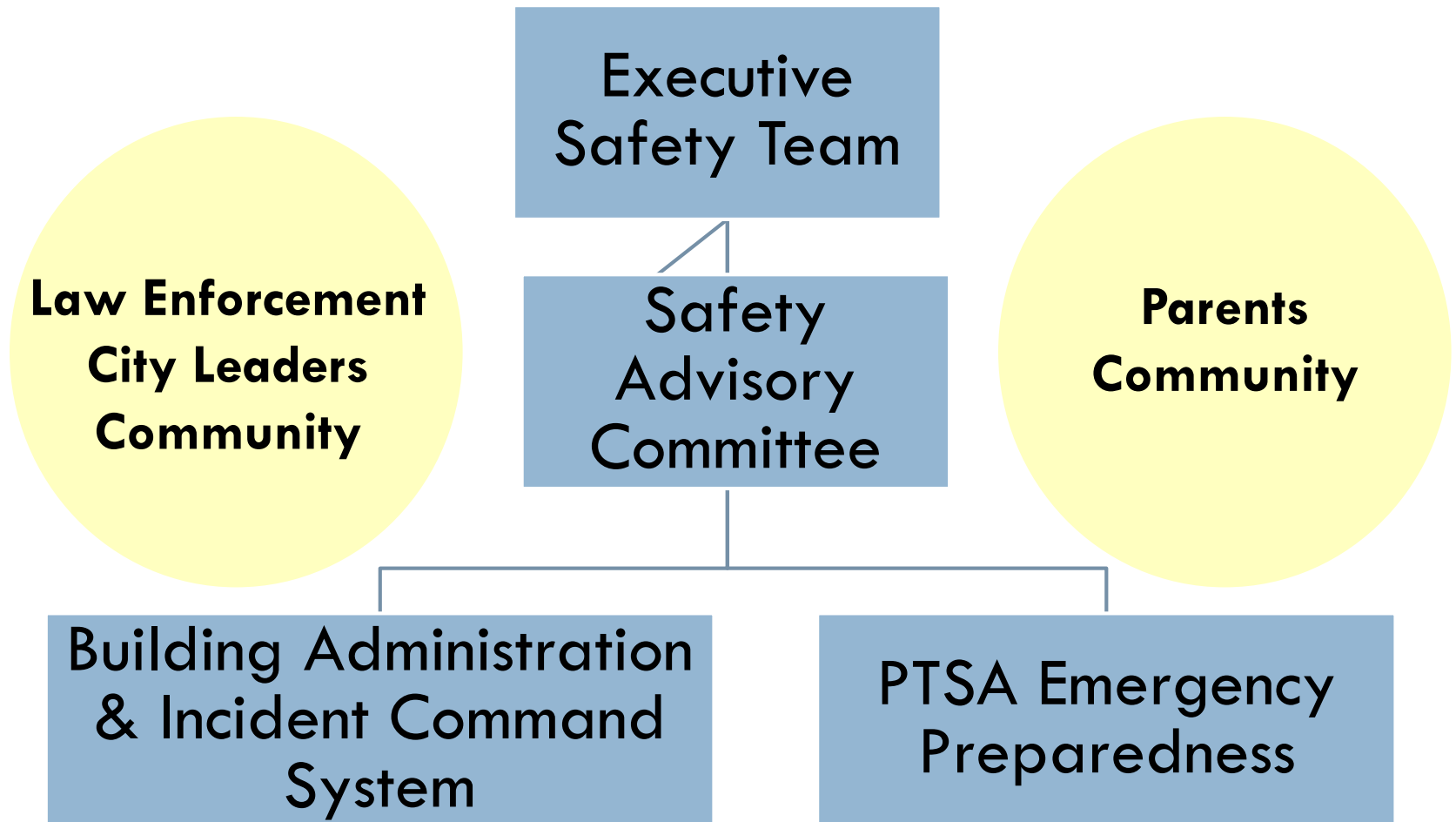
# Commitment to Safety

6

- Safety and security of our students and staff is a top priority
- Strategic goal - provide safe and innovative learning environments for our students
- **District Safety Structure & Comprehensive Emergency Management Plan**
  - Assess safety needs
  - Implement safety measures
  - Identify training needs
  - Respond to changing conditions

# District Safety & Security Structure

7



# Executive Safety Team

8

## Purpose Statement

To set overall direction of districtwide safety and security measures. In conjunction with the Safety Advisory Committee, decides on safety enhancements to include in district funding measures presented for Board approval.

Meets quarterly to assess current safety needs and ensure response to changing conditions.



# Executive Safety Team

9

## □ Chair

- Jane Stavem - Superintendent

## □ Membership

- Jon Holmen - Deputy Superintendent
- Barbara Posthumus - Associate Superintendent, Business & Support Services
- Forrest Miller - Director, Support Services
- Brian Buck – Associate Director, Support Services
- Scott Emry – Risk, Health & Safety Manager
- Bill Blake - Security/Safety Supervisor
- Matt Gillingham – Director, Student Services
- Rick Burden, Sue Anne Sullivan, Matt Livingston, Dale Cote – Directors, School Support
- Shannon Parthemer – Director, Communications & Community Engagement

**SCHOOL SAFETY:  
A SHARED  
RESPONSIBILITY**



10

# Comprehensive Emergency Management Plan (CEMP)

# Comprehensive Emergency Management Plan (CEMP)

11

A comprehensive emergency management plan (CEMP) is a documented plan with elements that address all natural and man-made emergencies and disasters to which an entity is vulnerable.

# Comprehensive Emergency Management Plan (CEMP) Elements

12

Prevention	Protection	Mitigation	Response	Recovery
School culture	Physical facility/ infrastructure upgrades and protocols	Emergency Drills	Incident Command System	Incident Command System
See something, say something		ALICE Training		
Safe Schools Alert System	School Resource Officers	PTSA Emergency Prep	School Resource Officers	Crisis Recovery Plan
Social Workers, School Counselors, YES Counselors, Nurses	Campus Security Monitors	School Resource Officers	Crisis Response Plan	
Social-Emotional Learning		Incident Command System		
Partnership with local jurisdictions/local law enforcement	Discipline and threat/risk assessment protocols	Rapid Responder System		

# Safety Advisory Committee

13

## Purpose Statement

To provide districtwide guidance with our community partners in safety, security and emergency preparedness.

Meets monthly to assess implementation of safety protocols, assess implementation and training needs to ensure response to changing conditions.



# Safety Advisory Committee

14

## Chair

Scott Emry, Risk, Health & Safety Manager

## Membership

King County Sheriff

Kirkland Police Department, Fire Department,  
Office of Emergency Management

Redmond Police Department, Fire Department

Sammamish Police Department, Office of  
Emergency Management

Eastside Fire & Rescue

Evergreen Health

PTSA

LWSD Administrators



# Building Administration & Incident Command System

15

## Purpose Statement

To provide for school safety, recognizing that physical, emotional, and intellectual safety are critical and necessary conditions in order for effective teaching and learning to take place.

The district provides oversight, support, structure, and training for each school to develop a school safety plan and Incident Command System.

Building Administrator Annual Checklist for Emergency Planning

SCHOOL INFORMATION			
NAME:			
SCHOOL:			
ITEM #	DESCRIPTION	DATE DUE	DATE COMPLETED
<b>BEGINNING OF YEAR</b>			
1	Confirm base station and hand held radios are operational	10-Sep	
2	Confirm intercom system is operational	10-Sep	
3	Update ICS chart	15-Oct	
4	Create buddy teacher system	15-Oct	
5	Contact PTSA Emergency Preparedness Coordinator to ensure emergency supplies are inventoried and current	1-Nov	
6	Ensure accurate evacuation maps are posted in classrooms and throughout school	10-Sep	
7	Update staff phone tree as communication back up	10-Sep	
8	Ensure appropriate staff are training in utility shut-off	10-Sep	
9	Conduct Staff Survey	15-Oct	
10	Update fire extinguisher and AED location map	15-Oct	
11	Update Rapid Responder System	15-Oct	
12	Conduct Building Security Self-Audit	15-Oct	
13	Review current Emergency Drill Schedule	10-Sep	
14	Update Emergency Staff Release Form	15-Oct	
15	Ensure staff are trained in emergency plans and ALICE principles	15-Oct	
16	Update Class lists for emergency attendance procedures	15-Oct	
17	Provide emergency plans for any staff of student with special needs or accommodations	15-Oct	
18	Confirm that at least two staff members have been trained in the use of SchoolMessenger and that the appropriate notification lists have been created	15-Oct	
<b>END OF YEAR</b>			
19	Ensure PTSA Emergency Preparedness Coordinator is selected for next year	1-Jun	
20	Inventory classroom emergency backpacks/buckets to see if additional supplies need to be ordered	15-May	
21	Ensure all drills have been entered into Rapid Responder accurately	1-Jun	

16

## Security and Safety Department



# District Safety and Security

## Security/Safety Supervisor – Bill Blake

- Reports to Risk, Health and Safety Manager
  - Works directly with buildings on emergency plans, drills, Incident Command systems, security self-audits.
  - Establishes procedures and training for Campus Security Monitors.
    - 3 all-day trainings scheduled for 2018-19
  - Collaborates with local police, fire and emergency management

18

## Partnerships

# Local Jurisdictions

19

## Police, fire, and traffic departments

- Provide site level support and expertise including building safety audits
- Provide expertise for traffic and developing suggested walk/bike route plans
- School Resource Officers



# School Resource Officers (SRO)

20

## Goals:

- Enable rapid emergency response
- Establish a working relationship with schools
- Serve as a resource and support for building administrators, students, and families

# School Resource Officers

21

- ❑ Uniformed police officer
- ❑ Partnerships with local jurisdictions
  - ▣ City of Redmond
  - ▣ City of Kirkland
  - ▣ City of Sammamish
  - ▣ King County



# School Resource Officers

22

- Redmond
  - ▣ 3 full-time SROs located at Redmond High School, Redmond Middle School, and Rose Hill Middle School
  - ▣ Available to assist at elementary schools as needed
- Kirkland
  - ▣ 2 full-time SROs located at Juanita High School and Lake Washington High School
  - ▣ Available to assist at middle schools and elementary schools as needed
- Sammamish
  - ▣ 1 full-time SRO located at Eastlake High School
  - ▣ Available to assist at the middle school and elementary schools as needed
- King County
  - ▣ 2 part-time SROs located at Tesla STEM High School and Evergreen Middle School
  - ▣ Available to assist at elementary schools as needed.

# School Resource Officers

## Expanded Support

23

- 2018-19 Budget provided additional funds to expand SRO service levels in all middle and choice high schools
- Working with each jurisdiction on timeline for expansion
- Kirkland
  - Adds 1.0 SRO at Finn Hill, Kamiakin and Kirkland Middle Schools and .5 EMHS and .5 ICS
  - The City of Kirkland has November ballot measure to provide funding for their portion of additional SRO's
- Sammamish
  - Adds 1.0 SRO at Inglewood Middle School
  - The City contracts with KC Sheriff and is working through them to fill this request
- King County
  - Increases hours to 1.0 at Evergreen and .5 at Tesla Stem High School
  - King County has committed to hire for these positions by 2019-20 school year.

# School Resource Officers - Program Goals

24

- Serves as a resource in the area of law enforcement
- Collaborates with administrators and staff to support to students
- Provides expertise for school safety measures
- Follows school district policies and procedures in alignment with police duties and applicable laws
- Builds relationships with students, staff, and community
- Conducts investigations for law violations on school district property
- Assists with crisis management and response coordination



# Campus Security Monitors

25

## Goal:

- To support building administrators in providing overall campus supervision and security.

# Campus Security Monitors

26

## 18 Campus Security Monitors

- ▣ 2 at each comprehensive high school
  - 2 shifts to accommodate school schedules
- ▣ 1 at each choice high school
- ▣ 4 hours per day at each comprehensive middle school

A horizontal decorative bar at the top of the page, consisting of an orange square on the left and a blue rectangle on the right.

# Social Emotional/Behavioral Health

# Behavioral Health Partnerships

- Youth Eastside Services (YES)
  - Behavioral Health Support Specialists
  - Prevention-Interventionists
  - SBIRT Specialist
  - Risk Assessments
  - Fee-for-service counseling
- Evergreen Health
  - Behavioral Health Social Worker
- Sound
  - Fee-for-service counseling
- SeaMar
  - Fee-for-service counseling
- Consejo
  - Fee-for-service counseling
- Asian Counseling Referral Services
  - Fee-for-service counseling
- UW School Mental Health Research, Assessment, and Training (SMART) Center
  - Consulting and training on behavioral health systems and interventions
- Eastside Pathways (Mental Health and Wellbeing Collaborative)
  - Alignment of community resources

# SEL/Behavioral Health Supports

29

- Elementary
  - ▣ K-5 Curricular and Schoolwide program (Second Step + Bullying Prevention)
  - ▣ 3-5 SEL Survey (Panorama)
  - ▣ K-5 Counselors
- Secondary
  - ▣ 6-8 Behavioral Health Screening and Motivational Interviewing (SBIRT)
  - ▣ 6-8 SEL Curricular Materials Review (Second Step, Mind Up, Character Strong)
  - ▣ 9-12 Anxiety Small Group Intervention (CBITS)
  - ▣ 9-12 Anxiety Brief Intervention (BRISC)
  - ▣ 6-12 Counselors

30

# Facility Safety Upgrades

# Facilities - Safety Upgrades

Project	Outcome	Status	Funding
Security Cameras	Enhance campus security at our comprehensive high schools	Complete	2010 Capital Projects Levy

# Facility Safety Upgrades

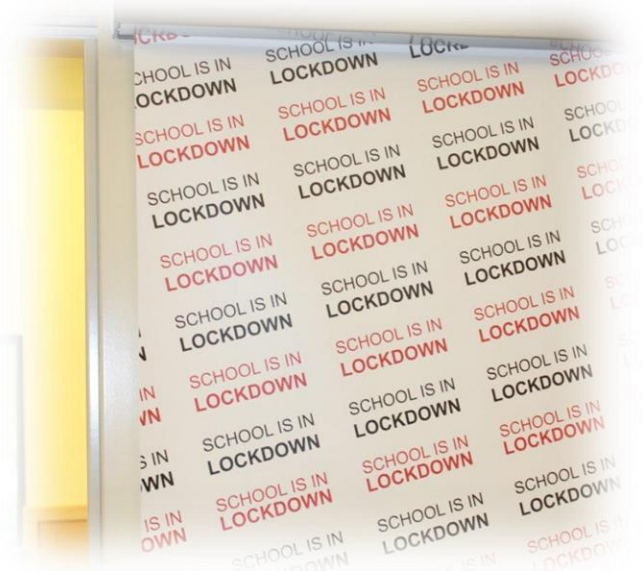
Project	Outcome	Status	Funding
Classroom locks	Allow classrooms to be locked from inside in event of lockdown or when needed in other emergency	Complete	2014 Capital Projects Levy





# Facility Safety Upgrades

Project	Outcome	Status	Funding
Interior classroom window shades	Provide interior classroom window coverings which can be pulled in the event of a lockdown or when needed in other emergencies	Complete	2014 Capital Projects Levy



# Facility Safety Upgrades

Project	Outcome	Status/Funding Source	Funding
Building access controls	Limit & control the access points & number of entrances to school buildings	Complete	2014 Capital Projects Levy



# Facility Safety Upgrades

Project	Outcome	Status	Funding
Entry Control System	Install video access system at the main entrance to school buildings	Equipment Installed Summer 2018 at all levels. In use at elementary and middle schools.	2018 Capital Projects Levy



# Facility Safety Upgrades - Anticipated

Project	Outcome	Status	Funding
Expand lockdown hardware and window treatments	Expand coverage areas to shared instructional spaces	Planning Phase	2018 Capital Projects Levy
Expand security cameras to choice high schools and comprehensive middle schools	Enhance campus security at our comprehensive high schools		