

Facility Planning and Community Engagement



Board Study Session
September 17, 2018

Work/Study Session Purpose

2



Inform

Discuss

Direct

Strategic Goals

3

- 1 Ensure academic success for every student**
- 2 Provide safe & innovative learning environments**
- 3 Recruit, hire & retain highly effective personnel**
- 4 Use resources effectively & be fiscally responsible**
- 5 Engage our communities**

Key Questions/Policy Considerations

4

- Given that the 2018 bond did not pass, and given that we still need classroom space for students,
 - What should be the immediate next step?
 - What kind of measure, when, and for what projects?
 - What should be the longer term strategy?
 - What kind of measure, when, and for what projects?
 - How does the immediate next step align with the longer term strategy?

Study Session Outline

5

- Review of work to date
- Review of past actions/strategies
- Recommended option
- Community Engagement
- Discussion

6

Review of Past Actions/Strategies

Addressing Space Needs Past

Passed bond for Phase 1 Modernization
Remodel/ replace 11 schools

1998



Passed bond for Phase 2 modernization
remodeled/ replaced 11 schools,
added Rachel Carson

2006



Attempted bond to remodel/ replace Juanita HS, EHS/RHS additions, 2 new elementary schools

2010



Passed 6-year levy to build additions at Eastlake and Redmond High Schools and to build Tesla STEM High School

2011



Addressing Space Needs Past

Moved to k-5 elementary, 6-8 middle school, and 9-12 high school configuration

2012



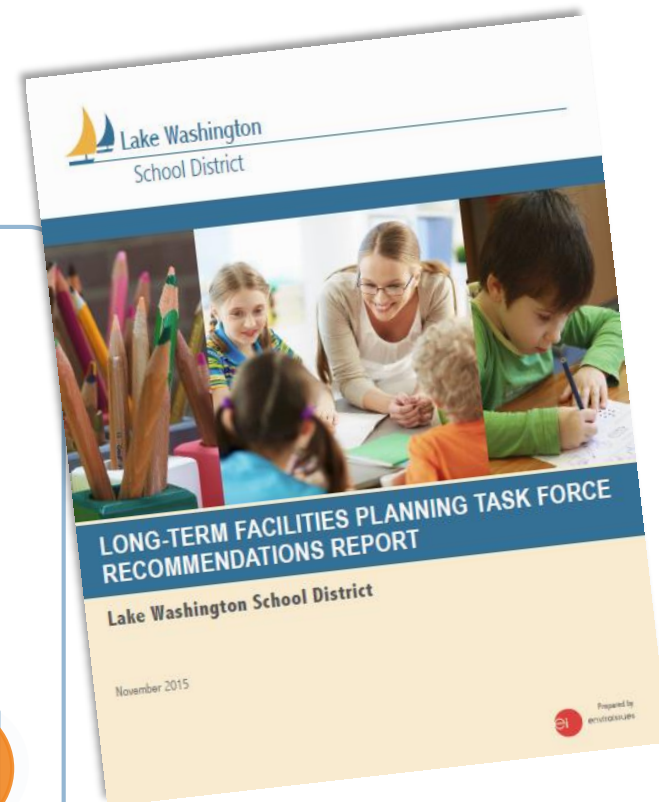
Attempted two bond measures to remodel/replace Juanita High, and build new elementary, middle and choice schools.

2014



Convened a 63 member Long-Term Facility Task Force to help develop a plan to address district facility challenges

2014

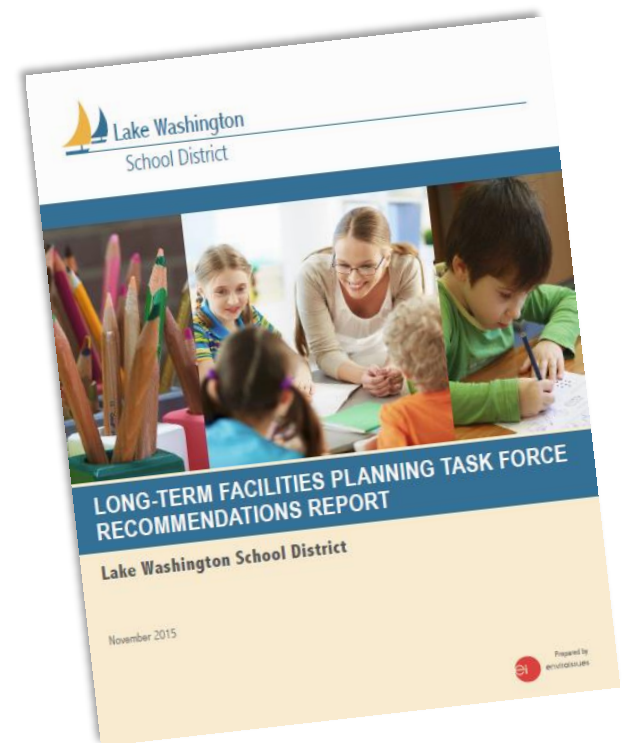


November 2015 Task Force Recommendation

Build More Schools

Projects through 2029-30:

- ➔ Intentional planning
- ➔ Creative options
- ➔ Efficient use of space
- ➔ Well-built, cost effective designs
- ➔ Continued community involvement
- ➔ Recommended back-up plans



Addressing Space Needs

Implemented short term space plan: 30 portables, addition at Redmond Elementary teacher planning spaces and reboundary

2015



Passed first of four bond measures to implement Long-Term Facility Task Force recommendations

2016



Redrew new boundaries and develop short-term space plan

2017



Attempted February 2018 Bond

2018



Long-Term Facility Funding Plan

April 2016

- New elementary school on Redmond Ridge
- New elementary in North Redmond
- New middle school on Redmond Ridge
- Juanita High School
- Kirk Elementary
- Mead
- Old Redmond Schoolhouse - preschool
- Explorer Elementary modulars
- Capital projects for Title IX and/or ADA



\$398 million
Adds space for 3,000 students

February 2018

- Addition at Lake Washington High School
- New elementary school in Lake Washington region
- Kamiakin Middle School
- New choice high school in Sammamish
- Alcott Elementary
- Special education learning spaces
- Land
- Site specific capital projects/contingency



\$299 million
Adds space for 2,100 students

2022

- Choice high school in Lake Washington region
- New elementary in Lake Washington region
- New elementary in Redmond region
- Evergreen Middle
- Preschool space
- Special Education learning spaces
- Land
- Site specific capital projects/contingency

2026

- Addition at Finn Hill Middle
- Smith Elementary
- Special Education learning spaces
- Land for future projects
- Potential future projects TBD
- Site specific capital projects/contingency

BONDS

Long-term Facility Task Force Recommendations

12

If we can't build fast enough - task force recommendation

- Program moves
- Add teacher planning rooms
- Temporarily increase portable classrooms
- Change attendance boundaries
- Temporarily reduce standard of service (art/science, resource, music rooms)
- Temporarily increase class size

If we can't build at all – task force recommendation

- Implement year-round multi-track school schedule

13

Work Since February 2018

Work to date

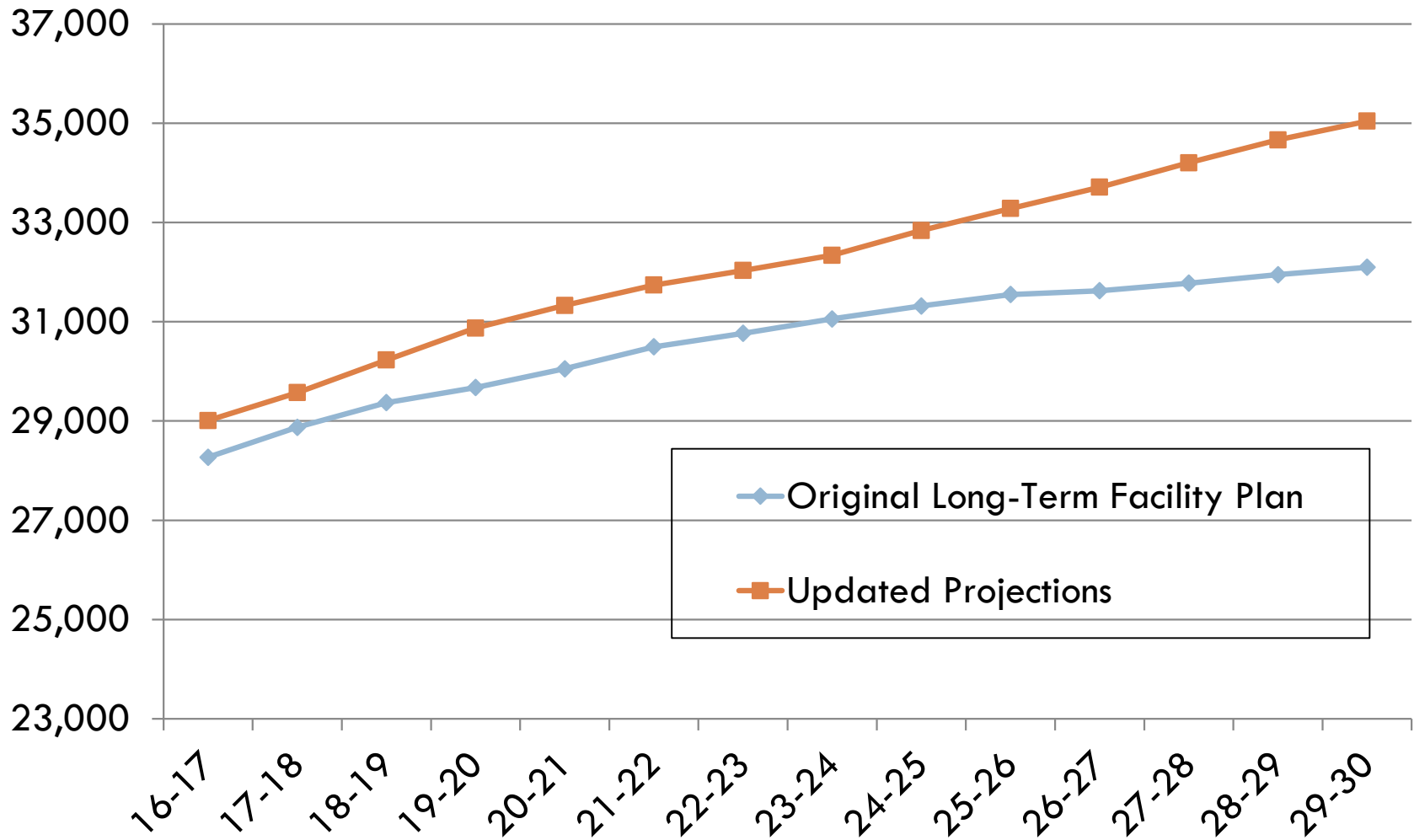
14

- Three board study sessions
 - March 25
 - May 7
 - May 21
- Reviewed enrollment projections and capacity shortfall
- Discussed past actions and strategies
- Discussed and provided options on potential critical projects
- Provided responses to board questions
- Reviewed Short-Term and Long-Term Community Engagement
- Reviewed election timing options and financial strategies

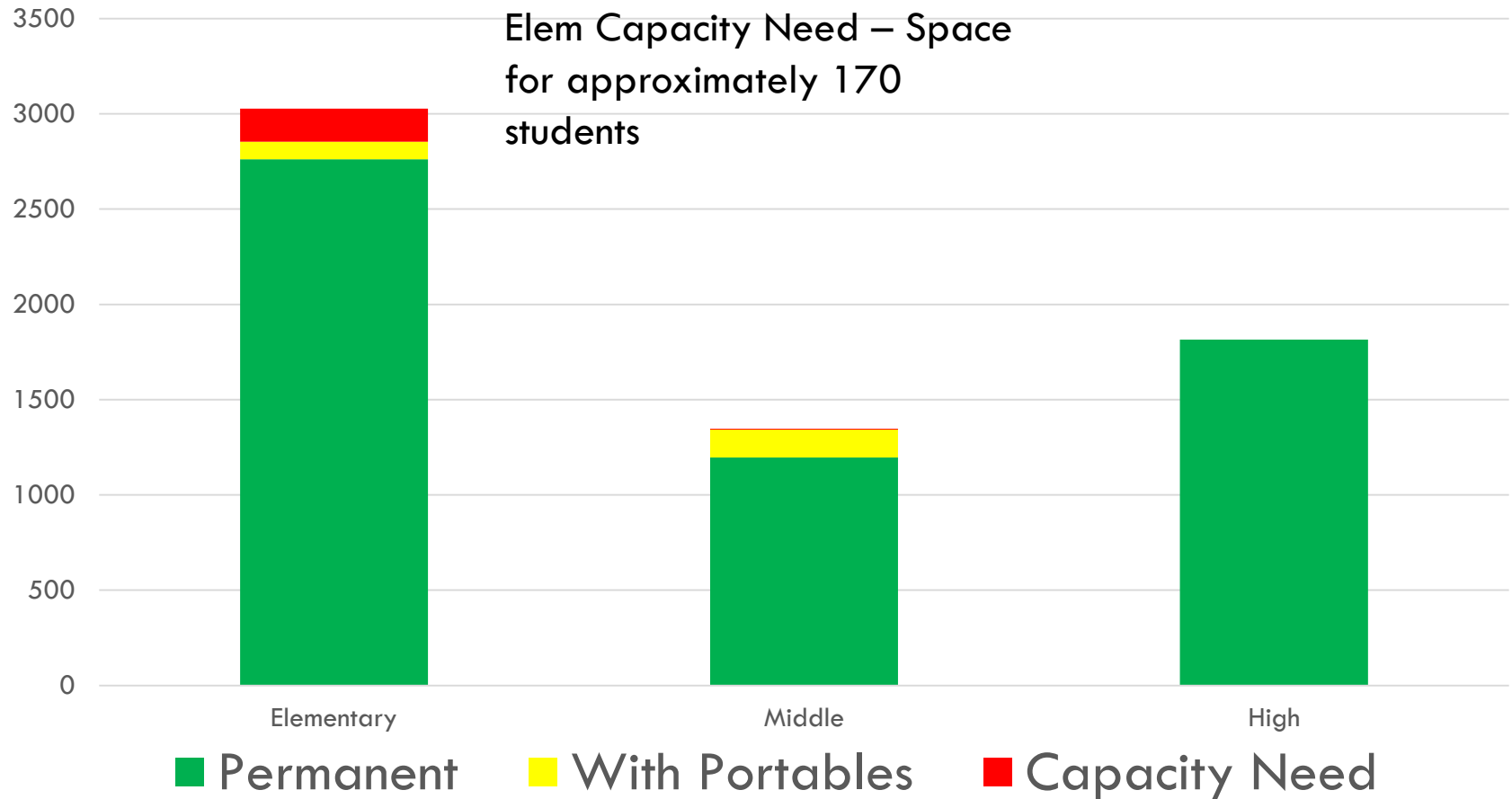
15

Recommended Critical Projects

Enrollment projections

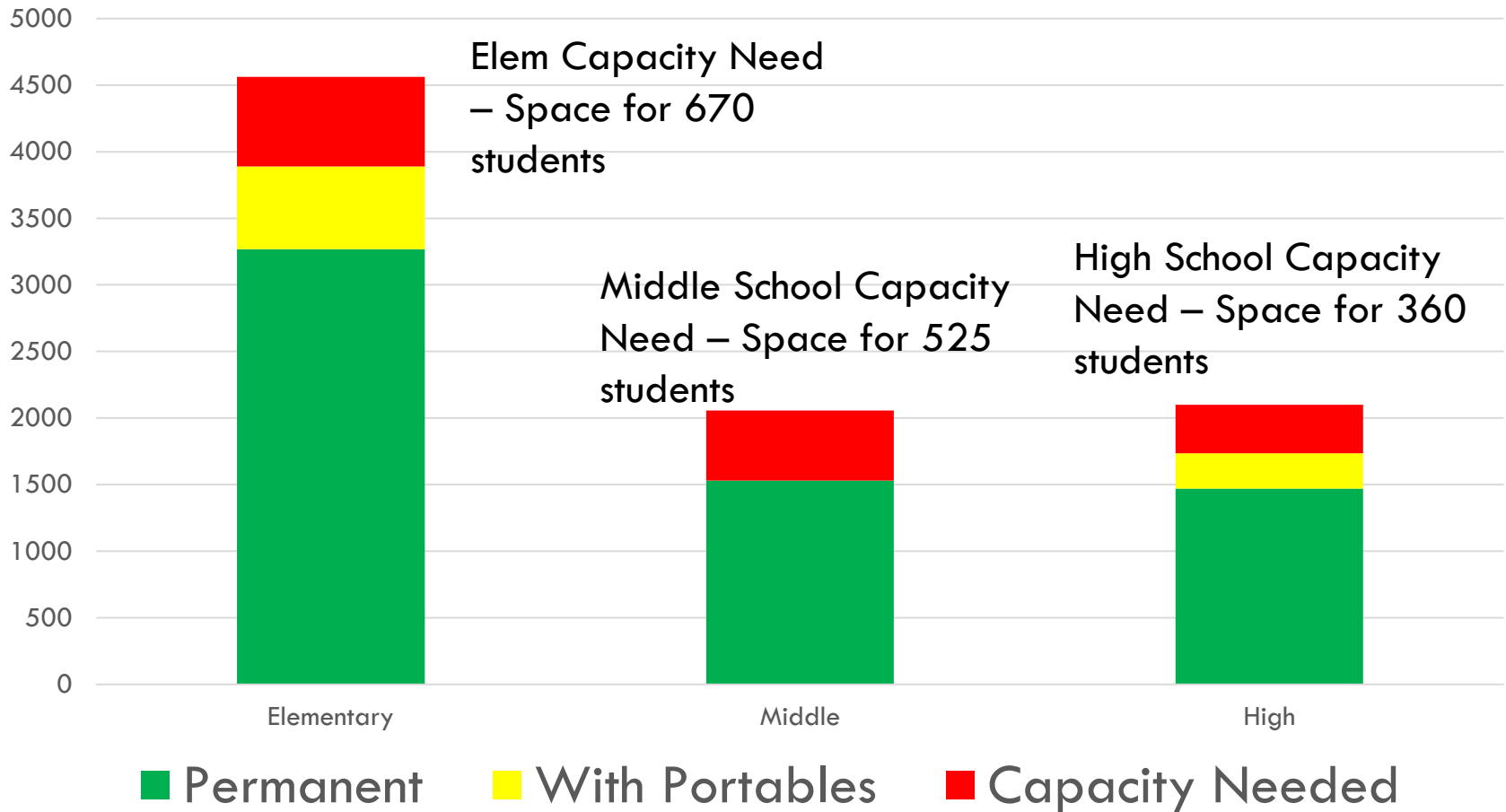


Capacity Need – Juanita Learning Community



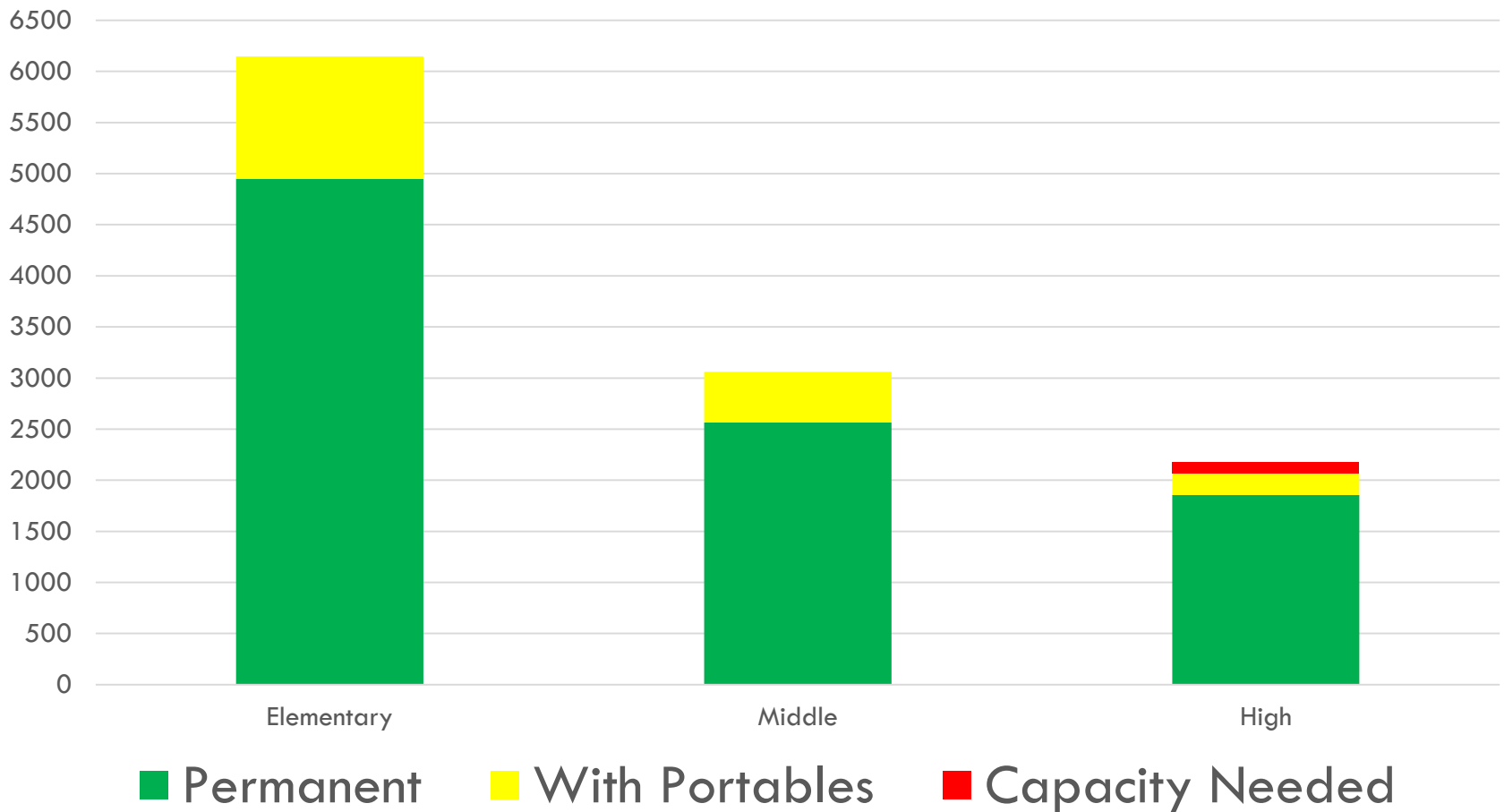
Based on enrollment projections through 2024-25

Capacity Need – Lake Washington Learning Community



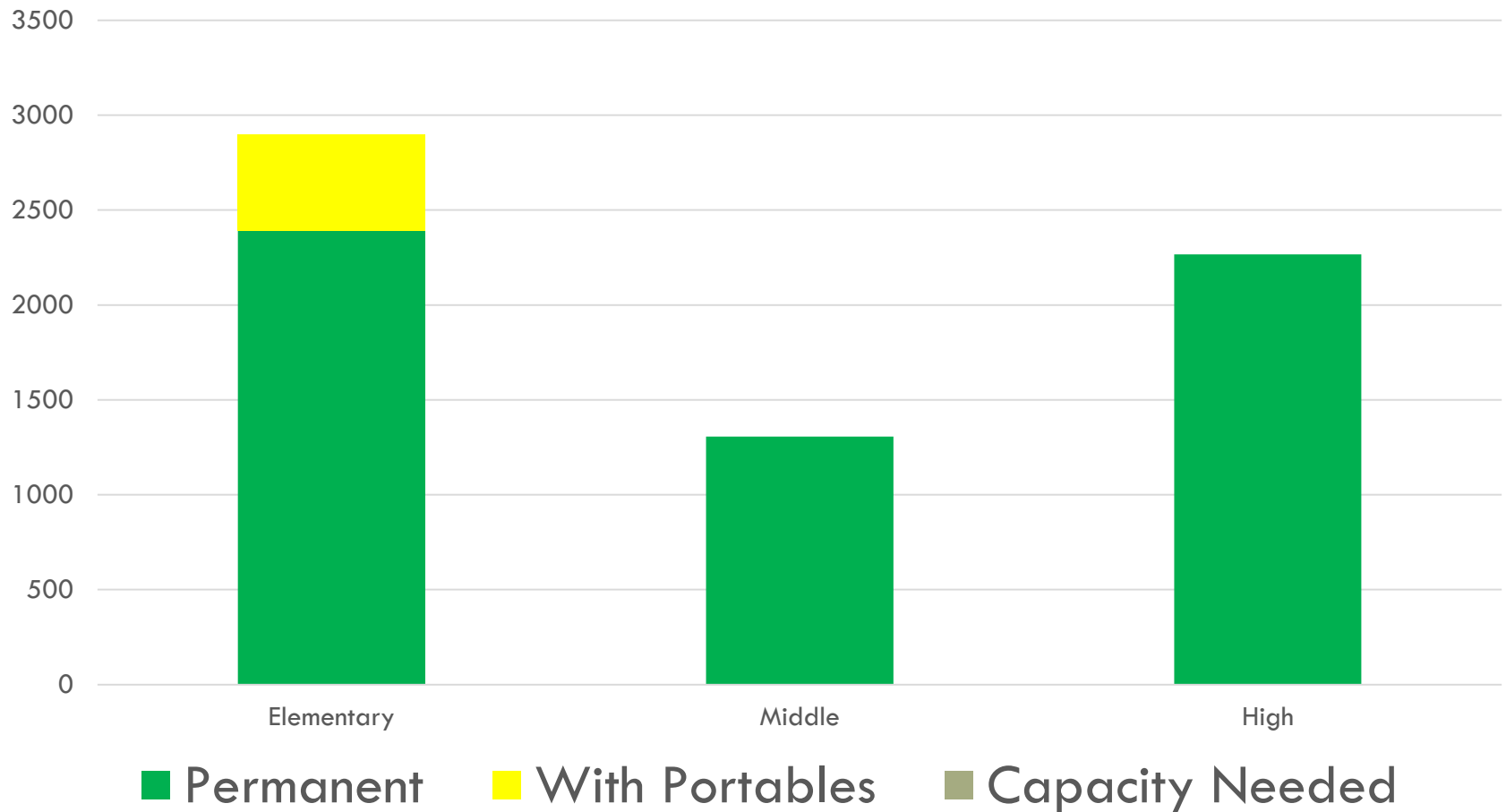
Based on enrollment projections through 2024-25

Capacity Need – Redmond Learning Community



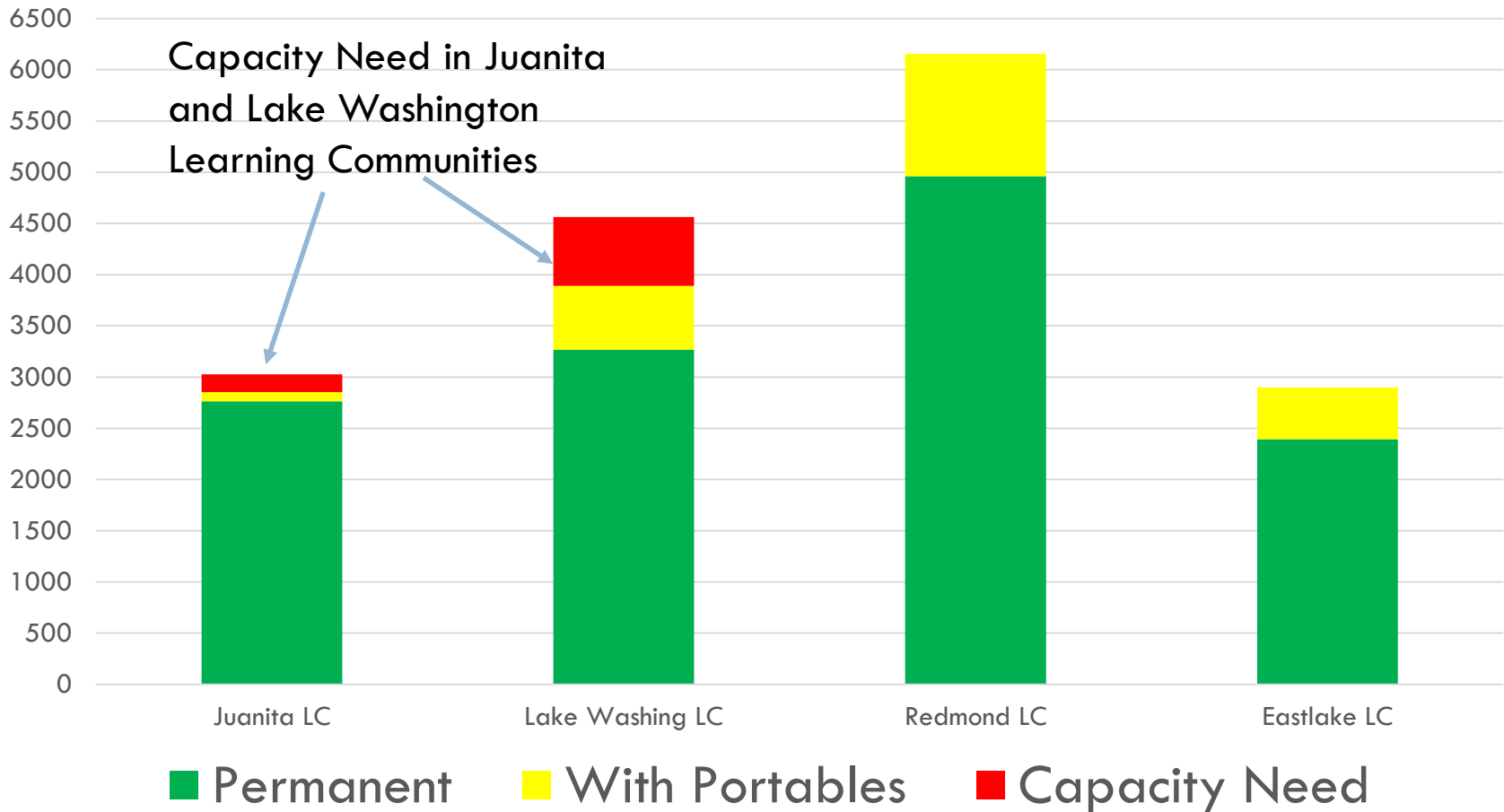
Based on enrollment projections through 2024-25

Capacity Need – Eastlake Learning Community



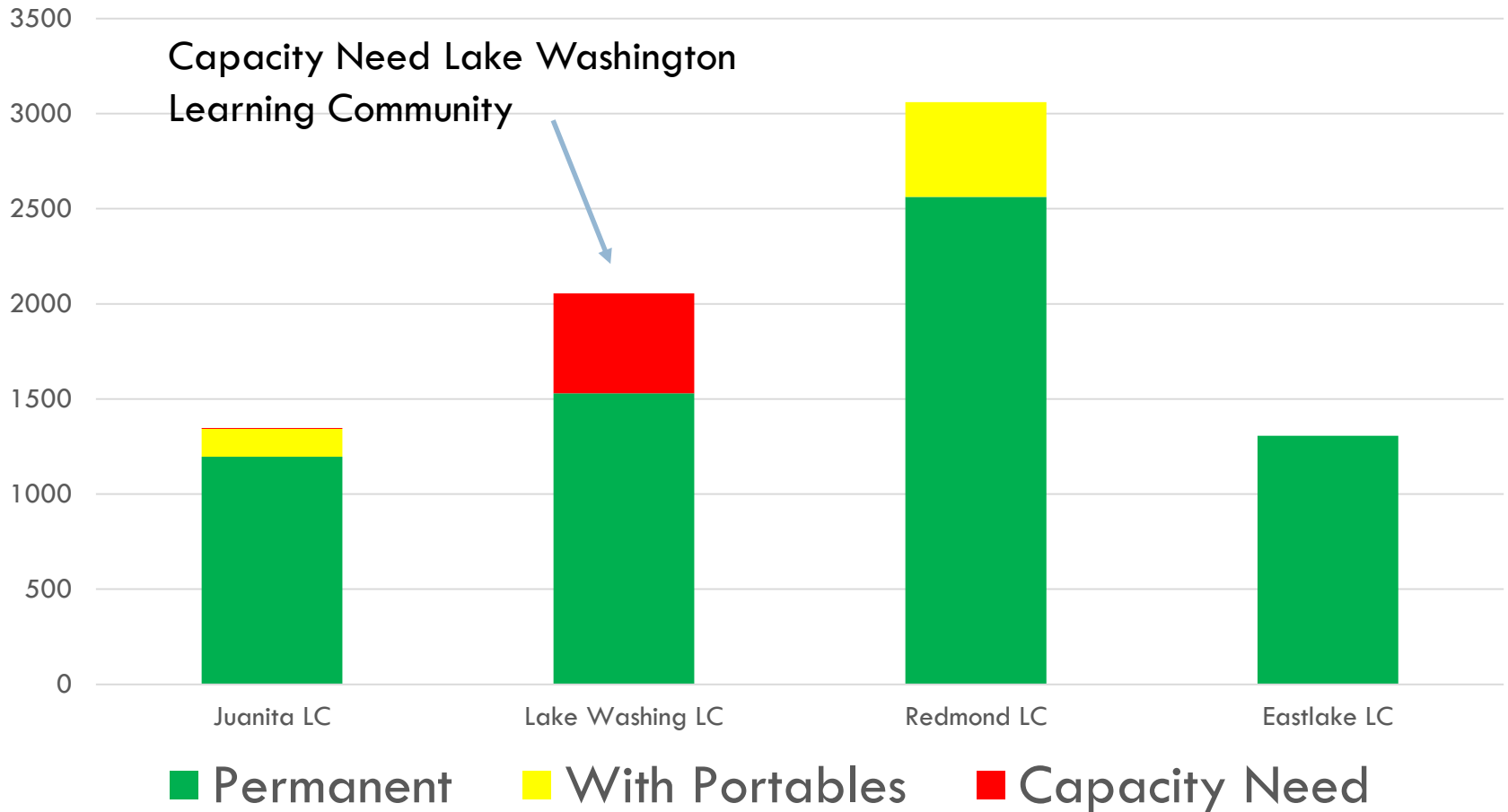
Based on enrollment projections through 2024-25

Capacity Need – Elementary



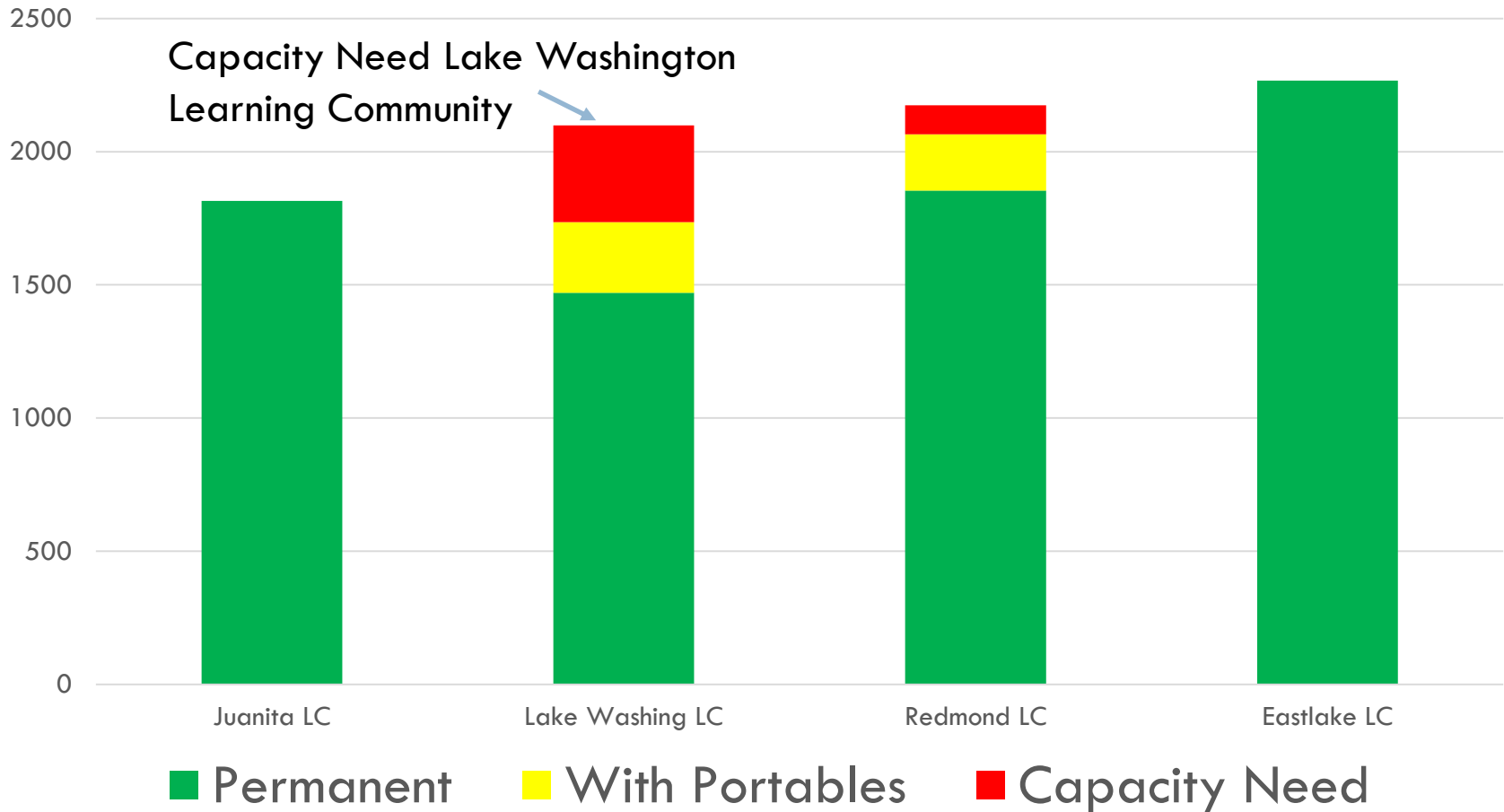
Based on enrollment projections through 2024-25

Capacity Need – Middle School



Based on enrollment projections through 2024-25

Capacity Need – High School



Based on enrollment projections through 2024-25

Juanita Learning Community

24

| Learning Community | Level | Recommended Options | Capacity Added | Cost (Millions) | |
|--------------------|-------------|---|----------------|-----------------|-------|
| Juanita LC | High School | NA | | | |
| | Middle | NA | | | |
| | Elementary | Continue temporary changes in standard of service | | | |
| | | Add portables (10) | | 230 | \$4.5 |

Lake Washington Learning Community

| Learning Community | Level | Recommended Options | Capacity Added | Cost (Millions) |
|--|-------------|---|----------------|-----------------|
| Lake Washington LC | High School | Explore District Choice program capacity at alternative sites | | |
| | | Construct 20 classroom addition at Lake Washington High School (including parking). | 500 | \$41.0 |
| | | Move portables to middle school. | (250) | |
| | Middle | <i>Reduce standard of service/teacher planning</i> | | |
| | | Add portables (2 KIMS, 8 RHMS) – move portables from LWHS to reduce costs | 249 | \$2.5 |
| | Elementary | <i>Continue temporary changes in standard of service</i> | | |
| Construct additions at Franklin, Rose Hill, Twain and Kirk Elementary Schools for a total of 25 Classrooms | | 575 | \$43.0 | |

Redmond and Eastlake Learning Communities

26

| Learning Community | Level | Recommended Options | Capacity Added | Cost (Millions) |
|--------------------|-------------|---------------------|----------------|-----------------|
| Redmond LC | High School | NA | | |
| | Middle | NA | | |
| | Elementary | NA | | |
| Eastlake LC | High School | NA | | |
| | Middle | NA | | |
| | Elementary | NA | | |

District-Wide Student/Staff Safety and Security Upgrades

27

- Potential projects
 - Elementary security cameras
 - Physical lockdown buttons
 - Vestibule/visitor channels
 - Fencing

Critical Projects for Growth & Safety

28

- Juanita Learning Community
 - ▣ **10 Portables**
- Lake Washington Learning Community
 - ▣ **10 Portables**
- Lake Washington Learning Community
 - ▣ Four Elementary School **Additions**
 - ▣ Lake Washington High School **Addition**
- District Wide
 - ▣ **Safety and Security Upgrades**

Property

29

- Need to reserve funds for property acquisition for future capacity needs:
 - Student and staff space

30

Funding Proposal

Funds Available for Critical Capacity Projects

31

| Funding Source | \$Millions |
|--|-------------------|
| Balance of 2006 Bond SCAP Funds | \$20 |
| Unsold 2006 Bonds | \$11 |
| Property Sale* | \$10 |
| Total Funds Available | \$41 |
| Less Reserve Portables and Property | (\$17) |
| Remaining Funds to allocate to Critical Capacity Projects | \$24 |

*Estimated proceeds from property surpluses May 2017. Funds have not been received.

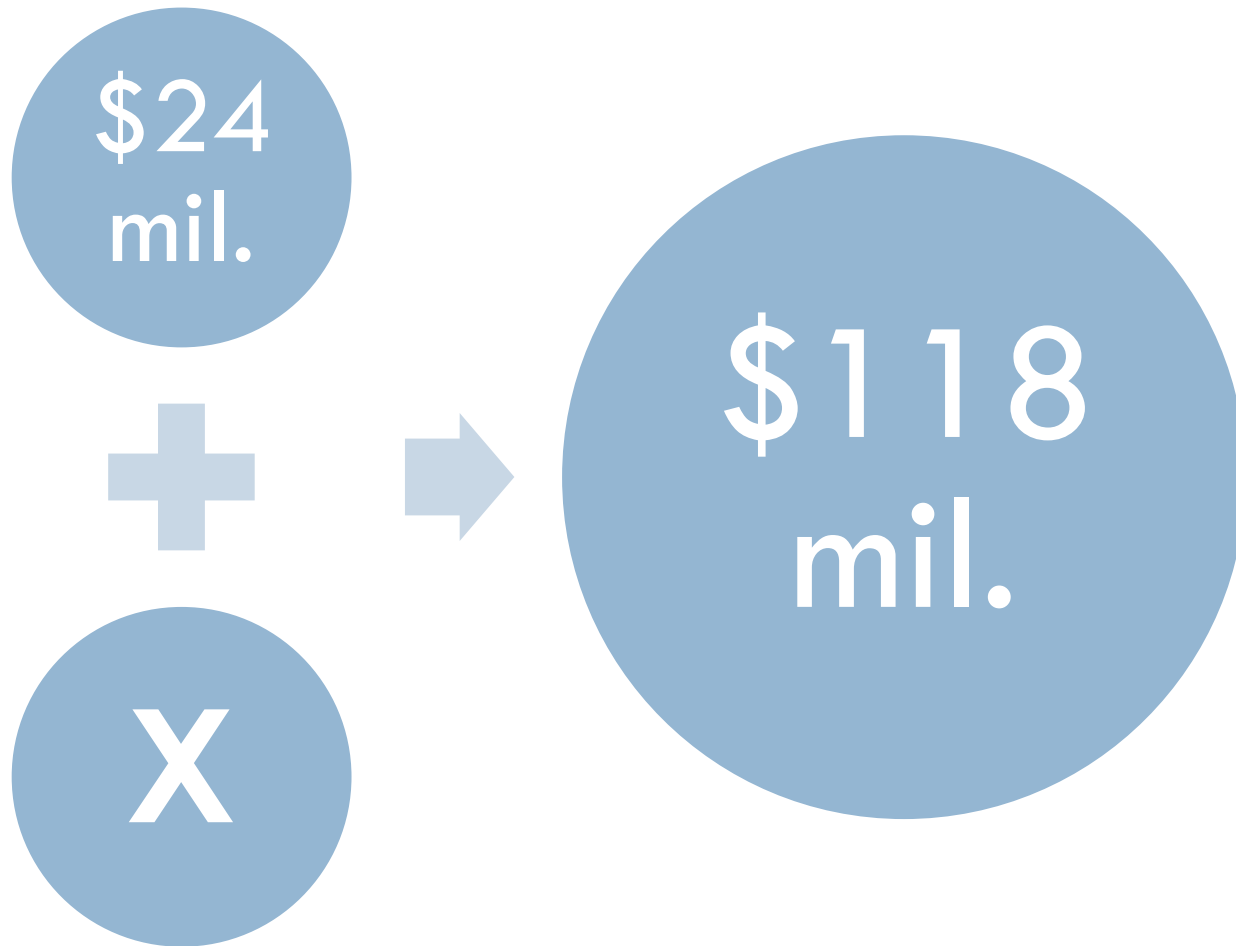
Funding Required to Meet Critical Capacity Needs

32

| Projects | Est. Cost in Millions | # of Classrooms | Capacity Added |
|--|-----------------------|-----------------|----------------|
| Addition at Franklin Elementary | \$12.2 | 8 | 184 |
| Addition at Rose Hill Elementary | \$13.5 | 8 | 184 |
| Addition at Twain Elementary | \$8.4 | 4 | 92 |
| Addition at Kirk Elementary | \$8.9 | 5 | 115 |
| <i>Subtotal</i> | \$43.0 | 25 | 575 |
| Addition at Lake Washington High School | \$41.0 | 20 | 250 |
| Contingency/interest | \$24.0 | | |
| District-wide student safety and security upgrades | \$10.0 | | |
| Total | \$118.0 | | |

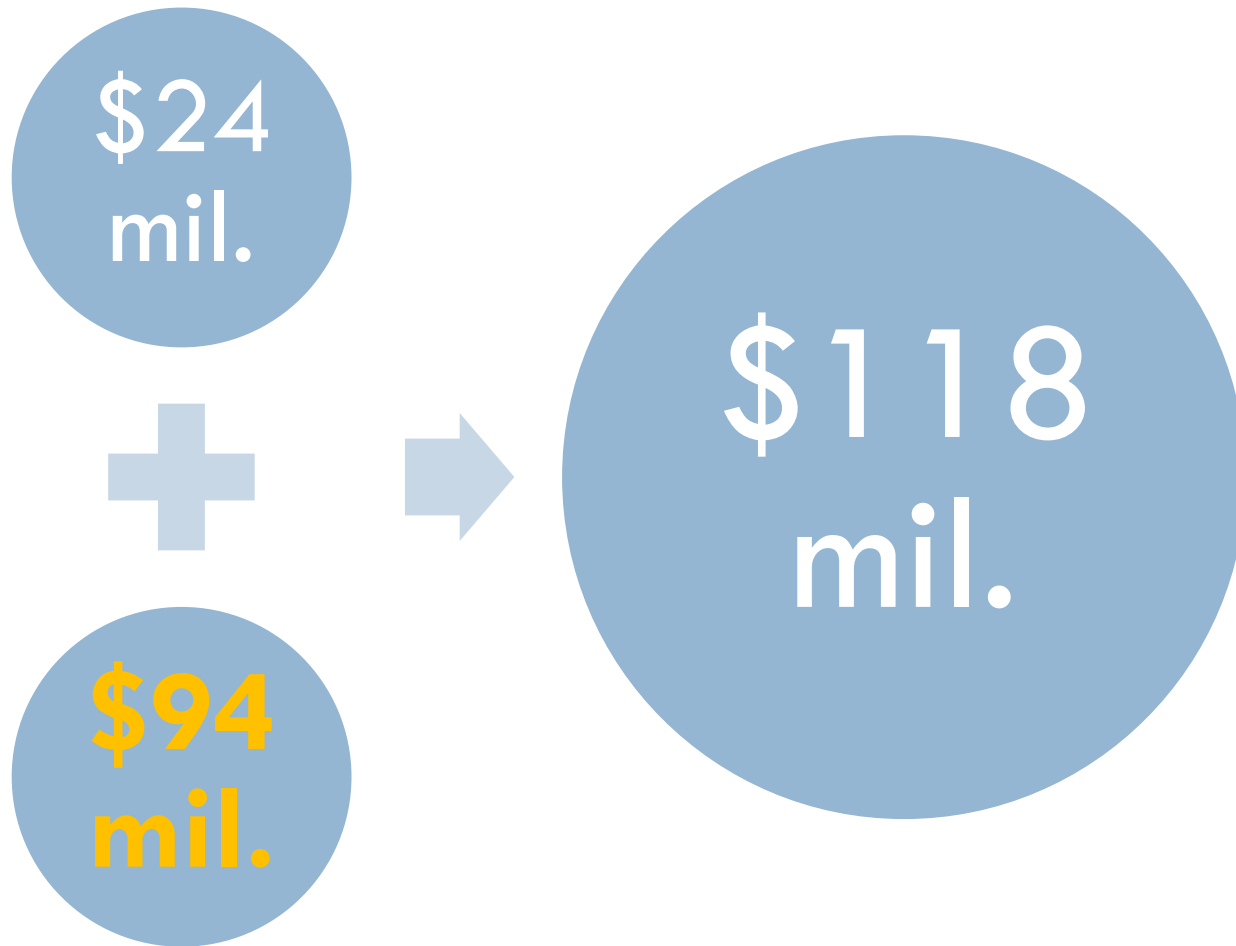
Funding Need

33



Funding Need

34



Six-Year Capital Projects Levy

Updated actual and projected tax rates based on actual 2018 AV

35

| Year | AV | % | Levy Rate per \$1,000 of AV | | | |
|------|--------|--------------|-----------------------------|---------|---------------|---------------|
| | | | EP&O | Capital | Bond | Total |
| 2018 | \$57.4 | 12.9% | \$1.20 | \$0.57 | \$1.26 | \$3.03 |
| | | | | | 6yr Levy&Bond | |
| 2019 | \$60.2 | 5.0% | \$0.97 | \$0.57 | \$1.26 | \$2.80 |
| 2020 | \$63.2 | 5.0% | \$0.97 | \$0.57 | \$1.26 | \$2.80 |
| 2021 | \$66.1 | 4.5% | \$0.97 | \$0.57 | \$1.26 | \$2.80 |
| 2022 | \$68.7 | 4.0% | \$0.97 | \$0.57 | \$1.26 | \$2.80 |
| 2023 | \$70.8 | 3.0% | \$0.97 | \$0.57 | \$1.26 | \$2.80 |
| 2024 | \$72.9 | 3.0% | \$0.97 | \$0.57 | \$1.26 | \$2.80 |

Structure 6-year levy and future bond sales to maintain total debt rate of \$1.26 per \$1,000 AV and total tax rate of \$2.80 per \$1,000 AV

36

Community Engagement

2018-19 Potential Election Timeline

37

| Action: | February Election | April Election |
|---|---------------------------|-----------------------|
| Online Open House – Community Engagement | Late Sept | October |
| Bond and Levy Advisory Committee | October | Nov |
| School Board Study Session and Meeting Presentation | November 5 | Dec/Jan |
| Potential Board action on resolution | November 19 or December 3 | Jan/Feb |
| Resolution filing deadline | December 14 | February 22 |
| Election | February 12 | April 23 |

Community Engagement – WHY?

38

DISTRICT INITIATIVES - UPDATES

- Facility Planning
- Funding Strategies
- Strategic Plan
- Student Profile
- Future Vision

Community Engagement – HOW?

39

PROCESS

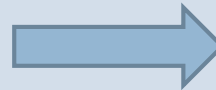
- Community Task Force
- Co-Leaders
- Working Sub-Committees
- Feedback and Communication
- November - May

Community Engagement – WHAT?

40

RECOMMENDATIONS

- Achievement
- Technology & Innovation
- Safety & Security
- Recruit, Hire, Retain
- Facilities & Finance
- Communication & Engagement



Programs & Services
Space & Facilities
Resource Management
Community Partnership
Opportunity & Equity

S
T
R
A
T
E
G
I
C

Community Engagement – WHO?

41

PEOPLE





- Community Members
- District Staff
- Superintendent
- Parents
- Students

Community Engagement – WHEN?

42

ANTICIPATED TIMELINE

- Fall through Spring
- November Start
- Monthly Meetings – TBD
- Aligned with Levy/Bond Plans

| WHY? District Initiatives | HOW? Process & Strategy | WHAT? Group Recommendations  | |
|--|---|---|--|
| Facility Plan | Establish Timelines and Meeting Schedules Select Group Members – Community + Staff Develop Communication Plan – Strategies Determine Locations for Meetings Engagement Strategies | ACHIEVEMENT |  Programs & Services Space & Facilities Resource Management Community Partnership Opportunity & Equity |
| Funding: Bond/Levy | | TECHNOLOGY & INNOVATION | |
| Strategic Plan | | SAFETY & SECURITY | |
| Student Profile | | RECRUIT HIRE RETAIN | |
| Community Engagement & Vision | | FACILITIES & FINANCE | |
| WHO? | | Community Members + Students + District Staff  | |
| WHEN? | Fall 2018  Spring 2020 | | |