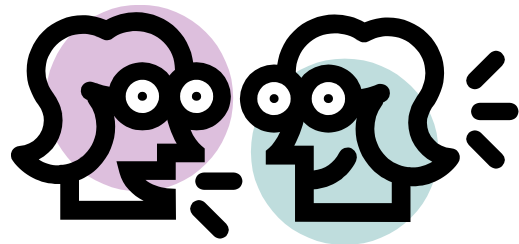


Board Study Session: Boundary Process Update

Work/Study Session Purpose

2



✓ Discussion



Decision



✓ Information



✓ Direction

Key Questions

3

- What changes have been made to boundary scenarios based on feedback?
- Does the Board have the information they need regarding the two scenarios that will be presented for community feedback in October?
- What is the relationship between the equity/balance commitment and the prioritized criteria in each of the scenarios?

Session Overview

4

- Review of LWSD policy
- Review boundary timeline and process
- Review community feedback
- Review committee data analysis process
- Review updated draft scenarios
- Preview next steps

A decorative horizontal bar at the top of the page, consisting of an orange square on the left and a blue rectangle extending to the right.

LWSD Policy

LWSD Administrative Policy: JC

School Attendance Areas

File: JC

The superintendent shall recommend attendance area configurations to the Board of Directors. Such configurations shall include but not be limited to a socio-economic impact statement relating to the area under consideration. Attendance variances may be approved by the superintendent or designee.

LWSD Governance Policy: EL-3

Communication & Counsel to the Board

Policy Type: Executive Limitations

Policy Code: EL-3

With respect to providing information and counsel to the Board, the CEO shall give the Board as much information as necessary to allow Board members to be adequately informed.

Accordingly, the CEO shall:

13. Recommend for Board approval school attendance boundaries that consider the impacts on families' continuity with their school and community, and are appropriate to the effective and efficient operation of the district.

8

Timeline and Process

Leading with Equity

Lake Washington School District is committed to providing high quality education to all students. As a public school system, we serve a diverse student body. We value diversity of race/ethnicity, gender, ability, and socio-economic status. **State law and district policy specifies that attendance boundaries must not cause imbalance in diversity of student population. The committee will use criteria to evaluate boundary options.**

2017-18 October 1 Free/Reduced

10

- Range 1.99% - 34.35% Free/Reduced Lunch

Prioritized Criteria

11

1. Maintain neighborhoods to the extent possible
2. Minimize the number of students and families affected
3. Redistribute enrollment to match school capacity and accommodate growth
4. Minimize transportation impacts
5. Use natural boundaries to the extent possible
6. Provide proximity of special programs to the extent possible

Boundary Committee Task

12

- The task of the boundary committee is to analyze the attendance areas of the schools possibly affected by new schools and current/potential overcrowding.

Scenario Analysis

13

Scenario Implications

Equity/Balance

FRL Range

Prioritized Criteria

Maintain neighborhoods to the extent possible

Description

Minimize the number of students and families affected

Baseline: 1 200 (EL)
900 (MS)

Redistribute enrollment to match school capacity and accommodate growth

Range of available classrooms (EL) and student capacity (MS)

Minimize transportation impacts

Description

Use natural boundaries to the extent possible

Description

Provide proximity of special programs to the extent possible

Description

Goal of the Boundary Process

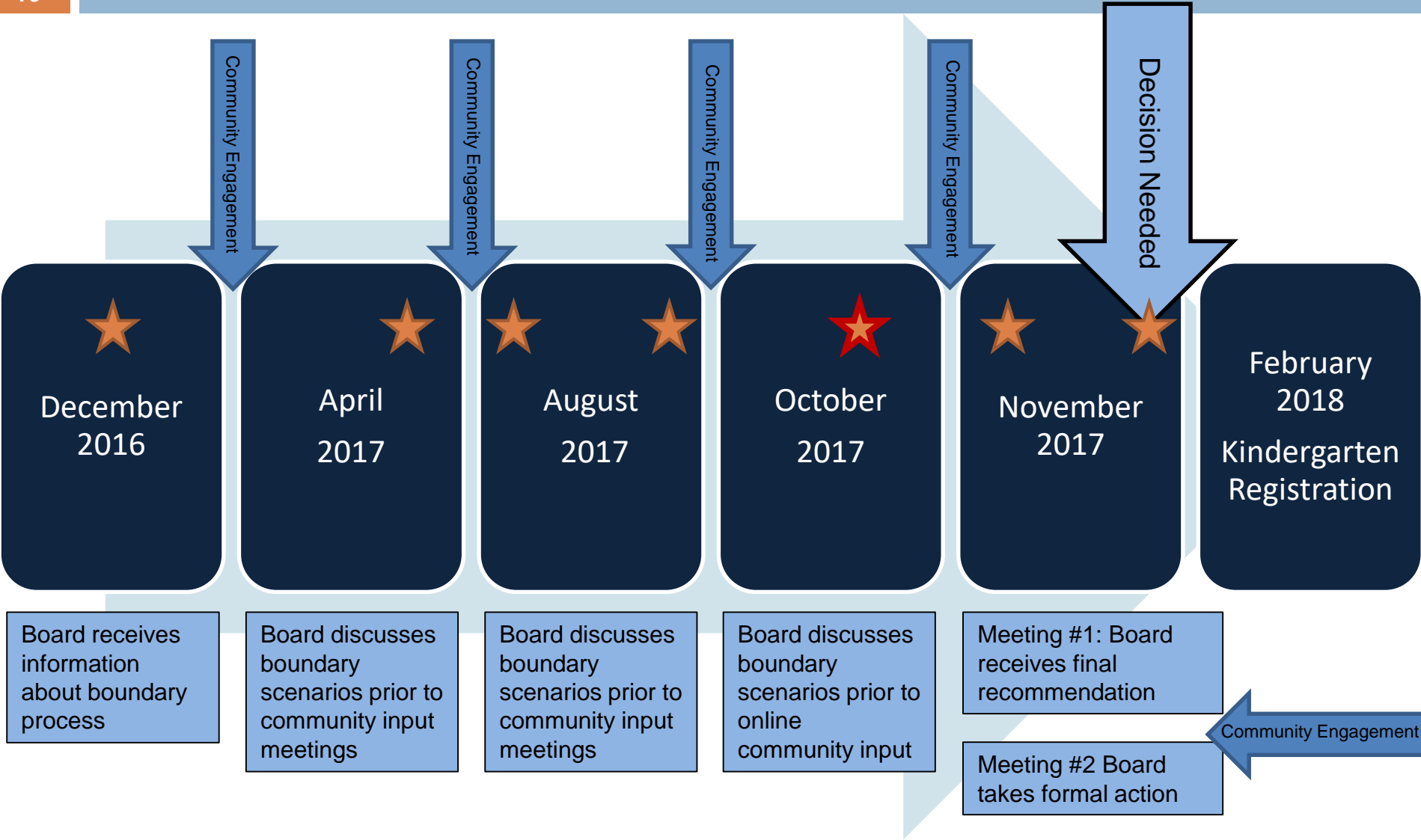
14

- Develop a final recommendation that provides necessary changes to school attendance areas in order to:
 - ▣ Redistribute students to existing schools
 - ▣ Draw attendance boundaries for new schools
 - ▣ Place district programs and choice schools

Redmond Area Schools

Elementary	Middle School
Alcott Elementary	Redmond Middle School
Dickinson Elementary	Evergreen Middle School
Einstein Elementary	New Middle School – Redmond Ridge
Mann Elementary	
Redmond Elementary	High School
Rockwell Elementary	Eastlake High School
Rosa Parks Elementary	Redmond High School
Wilder Elementary	
New Elementary – North Redmond	
New Elementary – Redmond Ridge East	

Boundary Timeline



Community Input Opportunities

17

Date:	Format	Method for gathering input
May 4 – RMS May 9 - EMS	Open House and Online	<ul style="list-style-type: none">• Verbal discussion• Written feedback• Rank order preference
May 4 - 19	Online Open House	<ul style="list-style-type: none">• Written feedback• Rank order preference
September 26 – RMS September 28 - EMS	Open House	<ul style="list-style-type: none">• Verbal discussion• Written feedback• Rank order preference
September 26 – October 2	Online Open House	<ul style="list-style-type: none">• Written feedback• Rank order preference
October 25-30	Online Open House	<ul style="list-style-type: none">• Written feedback• Rank order preference

Implementation Planning and Timelines

Elementary:

- Elementary boundary change will go into effect for the 2018-19 school year
- Students will transition to their new schools for 2018-19 (unless grandfathered, should grandfathering be part of the recommended/adopted boundary)

Middle School:

- Middle School boundary change will go into effect for the 2019-20 school year
- Students will transition to their new schools for 2019-20 (unless grandfathered, should grandfathering be part of the recommended/adopted boundary)

High School:

- High School boundary change will go into effect for the 2019-20 school year
- Incoming freshman will transition to their new school in September 2019
- No students attending high school in the 2018-19 school year will change high school placements

19

Community Feedback

Rank Order Data for Scenarios

	Elementary		Middle School		High School	
	Rank 1	Rank 1+2	Rank 1	Rank 1+2	Rank 1	Rank 1+2
Scenario A	47%	56%	49%	57%	51%	58%
Scenario B	40%	53%	35%	53%	36%	51%
Scenario C	8%	44%	9%	41%	7%	42%
Scenario D	5%	49%	7%	49%	7%	49%

Themes from the Narrative Feedback

21

- Consider greater distribution of Quest classrooms across the learning community
- Consider natural and man-made barriers when developing scenarios
- Consider transportation impacts for students
- Consider continuity for students

22

Data Analysis Process

Committee Data Analysis Process

23

- Read and review all narrative and rank-order data
- Identify specific neighborhoods, communities, or areas that expressed concerns
- Evaluate feedback to determine alignment with criteria and task
- Consider and identify best options for areas the committee agrees need to be addressed
- Identify recommended scenarios

24

Next Steps

Boundary Timeline

25

- October 16: Board Study Session
- October 25-30 Online Open House (*community feedback*)
- November 6: Board Study Session & Recommendation/Presentation
- November 20: Board Action on Boundary

Next Steps

26

- Committee will meet to finalize boundary scenarios for online open house
- After conclusion of open house, committee will analyze feedback and develop final recommendation.