



Lake Washington

School District

Facilities Advisory Committee: Recommendations

LAKE WASHINGTON SCHOOL DISTRICT BOARD

STUDY SESSION JULY 13, 2020

Agenda

- ☐ Overview of Facilities Advisory Committee (FAC) work to date and project recommendations
- ☐ Board Questions and Comments

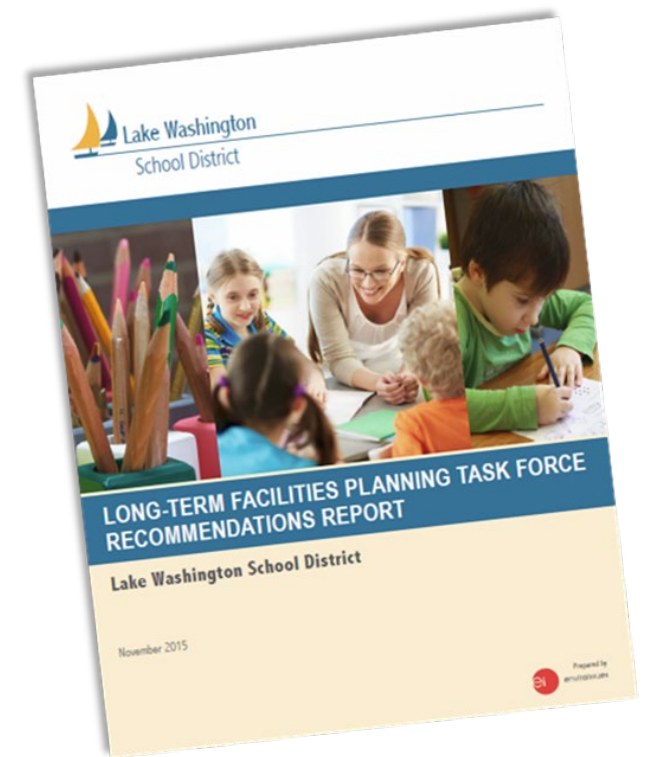


Facility Advisory Committee Purpose

Facility Advisory Committee will make recommendations for future facility planning, informed by enrollment trends, community expectations and district programs.

The facility strategy will align with the District's strategic plan and make recommendations to accommodate our rapid enrollment growth and continue to provide quality learning environments.

The Superintendent and School Board will consider these recommendations as it plans for future ballot measures to fund construction.



Background

- ❑ The Facilities Advisory Committee (FAC) met from November 2019 – May 2020
- ❑ Main purposes of FAC to:
 - ➔ Learn about Lake Washington School District's work to date on long-term facilities planning, including the recommendations from the 2014/2015 Long-Term Facilities Task Force and the 2016 Bond Advisory Committee
 - ➔ Review current demographic information, student growth projections and capacities
 - ➔ Consider recommendations made by the Long-Term Facilities Task Force and the Bond Advisory Committee in the context of current information and recommend any needed revisions or updates
 - ➔ Provide recommendations on future facilities needs and financing options



Committee members represented parents, business, senior citizens, City government and District staff

FAC Members

Facilities Advisory Committee members:

- Julie Akhter
- Shayna Begun
- Tracy Boucher
- Nancy Brown
- Cindy Burt
- Roy Captain
- Kelley Cochran
- Martha Daman
- Patricia Elkoury
- Heather Frazier
- Will Gray
- Megan Hayton
- Jon Hedin
- Jessica Jackson
- Jayme Jonas
- Gregory Kovsky
- Diana Lafornera
- Tiffany Lansing
- Mindy Lincicome
- Kim Mendenhall
- Dan Montgomery
- Linda Murphy
- Mark Nelson
- Donneta Oremus
- Catherine Potter
- David Pyle
- Jonathan Russell
- Victor Scarpelli
- Janset Sey-Iskin
- Balendra Sutharshan
- John Towers
- An Tran
- Wei Zheng

Facilities Advisory Committee technical team:

- Chris Brenengen
- Brian Buck
- Laura DeGooyer
- Shannon Parthemer
- Barbara Posthumus
- Jane Stavem, Superintendent
- Eric Laliberte, School Board member





FAC Meeting Topics / Outcomes

Date	Topic	Outcomes
Meeting 1 – November 20, 2019	Getting Oriented and Organized	<ul style="list-style-type: none">- Grounding FAC with background of LWSD facilities needs- Understanding history of work done and District's response- Understanding role of the FAC
Meeting 2 – December 19, 2019	Enrollment and Capacity	<ul style="list-style-type: none">- Understanding of capacity challenges, current shortfalls, and aging facilities- Understanding of how building condition is assessed- Awareness of available property and shortfall based on projected needs
Meeting 3 – January 16, 2020	Managing Growth	<ul style="list-style-type: none">- Establish understanding of updated demographics and enrollment projections and updated District needs- Understanding of how facilities (condition and overcrowding) contribute to student learning and success- Understanding of how growth affects staff support needs
January – February	Community Consultation	<ul style="list-style-type: none">- Hear from the community regarding rapid growth, capacity shortfalls and aging facilities.
Meeting 4 – February 27, 2020	Workshop: What We Build	<ul style="list-style-type: none">- Develop a revised project plan that incorporates revised enrollment projections



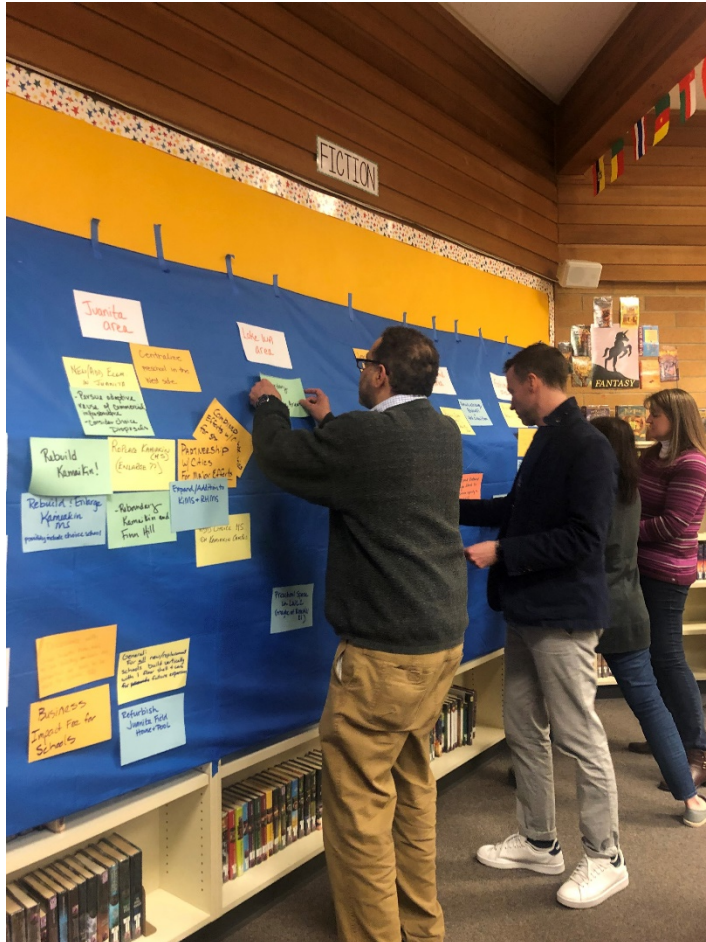



FAC Meetings Topics / Outcomes

Date	Topic	Outcomes
Meeting 5 – April 2, 2020	Funding	<ul style="list-style-type: none">- Understand facility funding options- Understand facility construction costs- Understand pros and cons of funding options
Meeting 6 – April 16, 2020	What We Build – Cost (Part I)	<ul style="list-style-type: none">- Revise preliminary project plan as needed to incorporate preliminary cost estimates- Revise funding options as needed in light of preliminary cost estimates
Meeting 7 – April 30, 2020	What We Build – Cost (Part II)	<ul style="list-style-type: none">- Review revised project recommendations table and validate- Develop proposed project sequence/funding approach- Develop innovations recommendation- Review and confirm recommendations in Long Term Facilities Task Force report
Meeting 8 – May 21, 2020	Refine recommendations	<ul style="list-style-type: none">- Review and confirm draft of recommendations report



FAC Worked In-Person and Virtually





Project Sequencing

Phasing: 3 - to divide; unsure a about size of Bond 1

1. Prioritize capacity in Redmond
Prioritize schools w/capacity issues, can be enlarged and use land more efficiently

Phase	Group	Project	Cost
Phase 1	Group 1	Alcott Kamiakin Redmond Elem	\$209.5
	Group 2	Choice HS in LWLC Choice HS in Redmond LC Kamiakin Choice school at Kamiakin Alcott Smitt	\$350.2
	Group 3	Alcott Rockwell Kamiakin Choice HS in LWLC Choice HS in Redmond or addition at Redmond HS	\$337.9
	Group 4	Choice in LWLC Choice in Redmond LC + Addition Kamiakin Addition on Kirkland middle Addition on Evergreen Alcott Rebuild Smith	\$230 million (estimate)
Phase 2	Group 5	Kamiakin Addition at Redmond HS + Core Rockwell Alcott Addition at Redmond ES	\$209.5
	Group 6	Choice in LWLC Choice in Redmond LC + Addition Kamiakin Addition on Kirkland middle Addition on Evergreen Alcott Rebuild Smith	\$197.5
Phase 3	Group 7	Choice in LWLC Choice in Redmond LC + Addition Kamiakin Addition on Kirkland middle Addition on Evergreen Alcott Rebuild Smith	\$111.5
	Group 8	Choice in LWLC Choice in Redmond LC + Addition Kamiakin Addition on Kirkland middle Addition on Evergreen Alcott Rebuild Smith	\$100M

5. biggest capacity concerns + aging schools. projects that address both.
Suggest housing choice programs in buildings that house middle or hs. Flexibility in walls or design. Shows responsiveness to community. Prioritize where schools can be enlarged and use land more efficiently.

2. Choice for capacity + property availability. Kamiakin - age + capacity. Take adv of size of space and add choice. ES - aging + capacity
Can alleviate LWLC crowding by moving some to Kamiakin

3. Agreed with criteria. Balance across all LC + across grades.
Alcott - age+capacity
Kamiakin - age+capacity
1 or 2 choice HS - high demand
Rockwell - age + capacity

4. 4 priorities - capacity, age of buildings, spread across LC, choice schools because land not available for comprehensive hs. Online learning (hybrid model) to reduce capacity needs. 1 phase because need is immediate. Concern with bond fatigue. ?Where's the big plan? Why constant requests?

Other \$43.4



Key Findings

- ❑ The District has successfully implemented many recommendations from the 2014 Long-Term Facilities Task Force
- ❑ The District is facing continued and unprecedented growth resulting in current and future overcrowded schools
- ❑ Aging schools need remodeling or replacement
 - ❑ Do not meet current educational specifications
- ❑ Land availability for new schools is limited in the District



Recommendations

- ☐ Prioritize building additional classroom capacity and addressing aging facilities
- ☐ Construct new buildings for larger capacity
- ☐ Maximize use of land at existing school sites
- ☐ Build with innovation in mind – consider urban school design
- ☐ Educate and regularly inform community about capacity and aging facility status and needs





Project Recommendations

High School & Middle School

	Juanita Learning Area	Lake Washington Learning Area	Redmond Learning Area	Eastlake Learning Area
Capacity Shortfall by 2029-30	0 0	506 506	429 641	0 0
High School	n/a	Build a new choice school	<ul style="list-style-type: none">- Build a choice school in either Redmond LC or Eastlake LC- Build an addition at Redmond HS	<ul style="list-style-type: none">- Build a choice school in either Redmond LC or Eastlake LC
Capacity Shortfall by 2029-30	55 202	224 473	100 274	0 6
Middle School	<ul style="list-style-type: none">- Rebuild or expand Kamiakin to 900 capacity- Reboundary to alleviate Finn Hill capacity <u>or</u>- Move Environmental MS to Kamiakin campus (or move Stella Schola)	<ul style="list-style-type: none">- Build addition to bring Kirkland MS to at least 800 capacity- Reboundary Rose Hill MS and Kirkland MS- Move Stella Schola from Rose Hill to Kamiakin campus (or move Environmental MS)	<ul style="list-style-type: none">- Reboundary between middle schools	<ul style="list-style-type: none">- Rebuild or expand Evergreen MS to at least 900- Reboundary to alleviate Inglewood MS capacity



Project Recommendations

Elementary School & Other

	Juanita Learning Area	Lake Washington Learning Area	Redmond Learning Area	Eastlake Learning Area
Capacity Shortfall by 2029-30	75 397	47 668	0 762	85 959
Elementary School	Move existing preschools off elementary campuses to alleviate ES capacity	<ul style="list-style-type: none">- Add one new elementary school- Reboundary to alleviate ES capacity	<ul style="list-style-type: none">- Build capacity on Redmond ES site- Rebuild and expand Rockwell ES- Reboundary to alleviate ES capacity	<ul style="list-style-type: none">- Rebuild and expand Alcott ES and Smith ES- Reboundary to alleviate ES capacity
Other	<ul style="list-style-type: none">- Refurbish Juanita field house and pool, partner with local government for athletic field use- Build or acquire space for preschools	Build or acquire space for preschools	Build or acquire space for preschools	Build or acquire space for preschools



Funding Recommendations

- ☐ Use bonds for capital facilities
- ☐ Pursue a bond strategy over multiple years
- ☐ Use capital levies as a fallback strategy if bond measure fails
- ☐ Continue to advocate to the state legislature for 50% approval threshold for school bond measures



Funding Priorities

- ❑ Committee consensus on projects in first bond phase
 - ➡ Rebuild and expand Kamiakin Middle School
 - ➡ Rebuild and expand Alcott Elementary School
- ❑ Other projects to be considered in first bond phase
 - ➡ New, small high school option (choice or urban) – either in Redmond or Lake Washington Learning Community
 - ➡ New elementary in Lake Washington Area and Redmond Area

Funding Priorities

☐ Criteria to prioritize projects

- ➡ Prioritize projects that address both capacity and aging schools
- ➡ Spread projects across the District's learning areas and across levels
- ➡ Prioritize schools that have capacity issues and underdeveloped land

Community Engagement

❑ Thought Exchange – January and February 2020

- ➡ What are the most important perspectives to consider as we plan for future facilities to accommodate growth in our District?
- ➡ More than 1200 responses

❑ Additional consultation in Fall 2020 on draft recommendations



Next Steps

- ☐ Board Questions and Comments
- ☐ Community Engagement - Fall 2020
 - ☐ Funding and Phasing of Projects
- ☐ FAC finalizes recommendations based on input
- ☐ Board receives final recommendations – January/February 2021

