

Welcome to the EAS Information Night!

Choice School Online Application available
November 1st on the LWSD and EAS
websites:

<https://www.lwsd.org/schools/choice-schools>

Applications due by
Friday, December 2nd by 11:59 pm



ENVIRONMENTAL & ADVENTURE SCHOOL

FOUNDED SEPTEMBER 1999

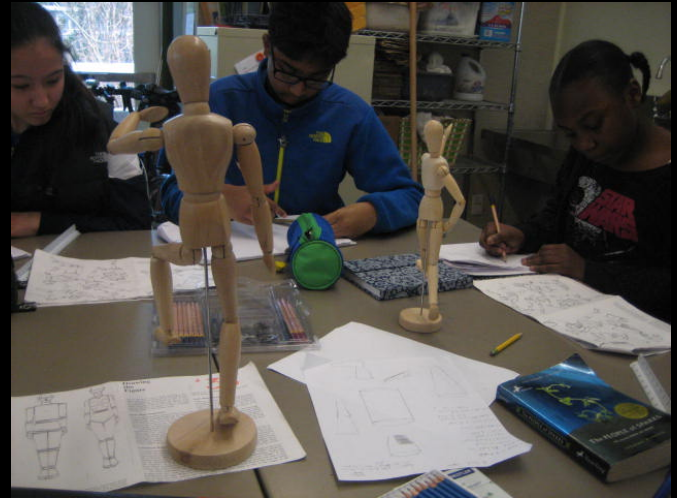


Is EAS the Right Choice?

All Choice Schools offer different programs.

- Is the student and family willing to commit to the school's goals and expectations?
- Is your student committed to attending the Choice School for all 3 years?
- Is your student willing to part ways with elementary friends and join a new community?





What makes EAS unique?

- Multi-grade (6th, 7th, 8th) integrated classes
- Five advisory “clans”
- Spiraling thematic curriculum
- Annual Health Fair



What makes EAS unique?

- Adventure Education — 3 weeks each year
- Community Stewardship Projects — 3 sessions each year
- Wednesday Electives — beyond traditional elective classes





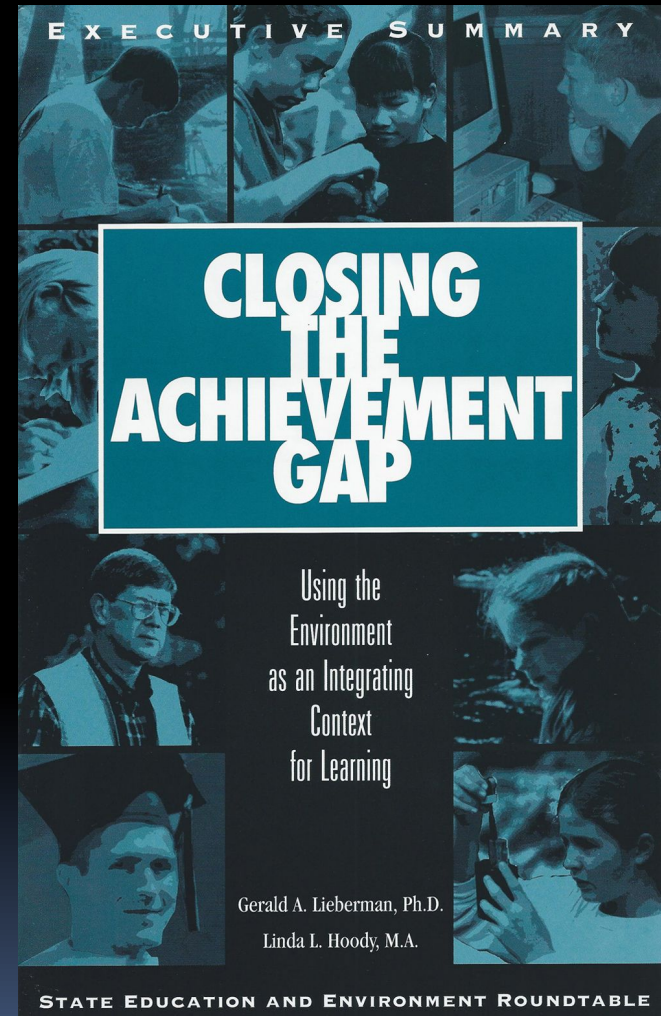
Philosophy & Founding of School

- Based on needs of middle-level learners:
 - Engaging, integrated, curriculum with rigor
 - Personally relevant work and learning
 - Application of learnings to improving community
 - To be valued for their contributions
 - Connection to a variety of student/school groups
- Strong parental involvement and community partnerships

Why an Environmental Focus?

Researched-Based Rationale:

- Curriculum Integration
- Increased enthusiasm for learning
- Reduced discipline problems
- Better performance on standardized tests
- Greater pride & ownership in accomplishments



State Education & Environment Roundtable (SEER) Study

Expectations of an EAS Student

- Meet LWSD and State academic requirements
- Consistent attendance
- Participate fully in all Adventure Education, Elective Classes, and Community Stewardship Projects



Expectations of an EAS Student

- Up to 2 hours home-study every evening
- Actively work toward a 3.0 (“*at standard*”) and above in all classes
 - *Required for participation on EAS Excursions*
- Step out of comfort zone, try new things, take initiative







Characteristics for Success

- Personal Organization and Study Skills
- Willingness to improve academic and social skills
- Willingness to put forth best efforts
- Willingness to accept challenges and difficult tasks
- Taking responsibility and ownership for own learning and behavior







Parent Observations

“Seeing groups tackle challenging tasks as a team showed me how effective EAS is at preparing our young people for their future.”

“As EAS students experience being leaders in their small community, they are preparing to be leaders in the larger community.”

“I hear students talk about how inspired they are to work hard, be confident, try their best at everything, and work together to achieve more .”

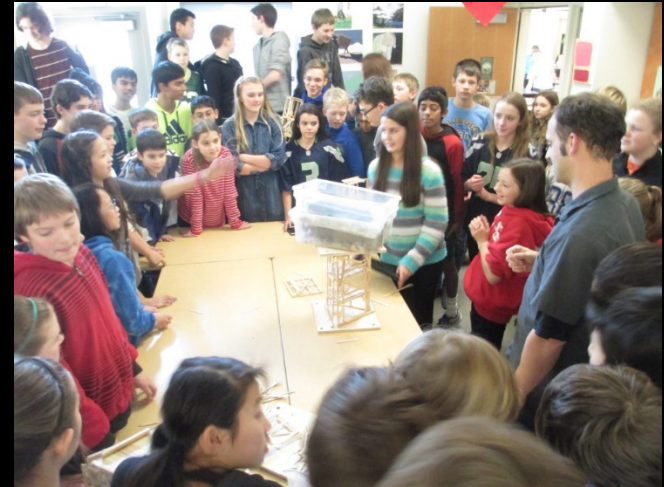




Community Involvement:

EAS values the involvement of all parents and guardians. There are many ways to get involved including:

- Providing environment and structure at home for student success
- Volunteering at the school or at home
- Making a financial donation which supports our many unique school activities.
 - EAS does not hold fundraisers





EAS Curriculum

Environmental Themes Across Subject Areas

- Language Arts
- Social Studies
- Science/STEM
- Art
- Fitness
- Health

Expanded and enhanced with Adventure Learning, Community Stewardship, and Elective Programs.

3 years of Spanish by grade level

3 years of math with course sequence based on initial placement and student progress

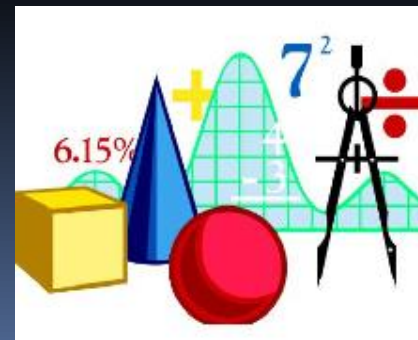
Math

LWSD Levels at EAS:

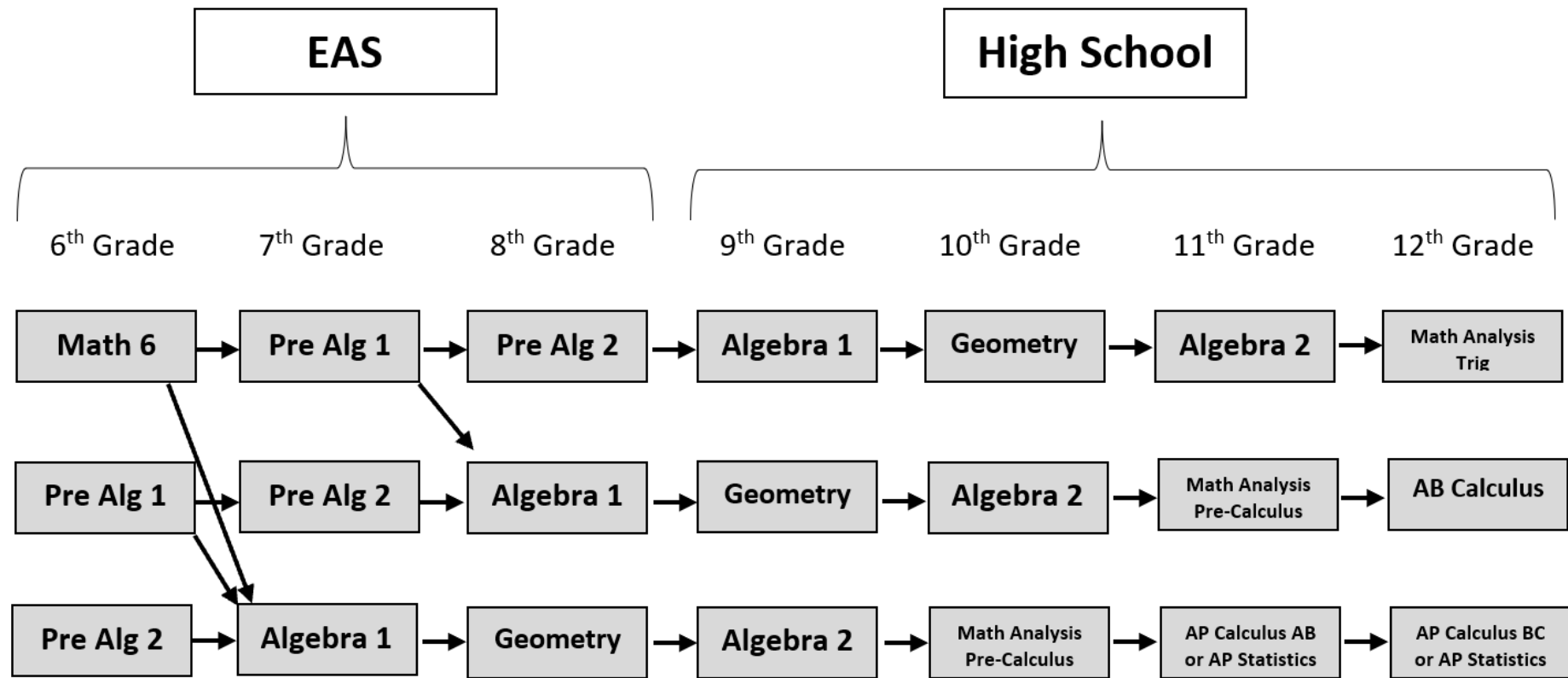
- Math-6
- Pre-Algebra I
- Pre-Algebra II
- Algebra 1
- Geometry

Initial placement by:

- Diagnostic assessment at EAS in the spring
- Current SBA scores
- Prior Year Teacher Recommendation
- Acceleration options



EAS Math Pathways



Features and Programs of EAS that Expand Learning

- Curriculum and Instruction
 - School-wide thematic curriculum
 - Interdependent Relationships – People & Environments
 - Thematic, integrated Curriculum in a 3-year spiral for LA/SS/Science/STEM/Art
 - Multi-age classes



Special Services at EAS

- For students with IEPs, in accordance with District Policy, the campus IEP team works with all EAS students to determine how the school can best meet a student's service requirements.



Proven Results

- Test Score Data

- EAS student scores trend well above standard on state assessments.

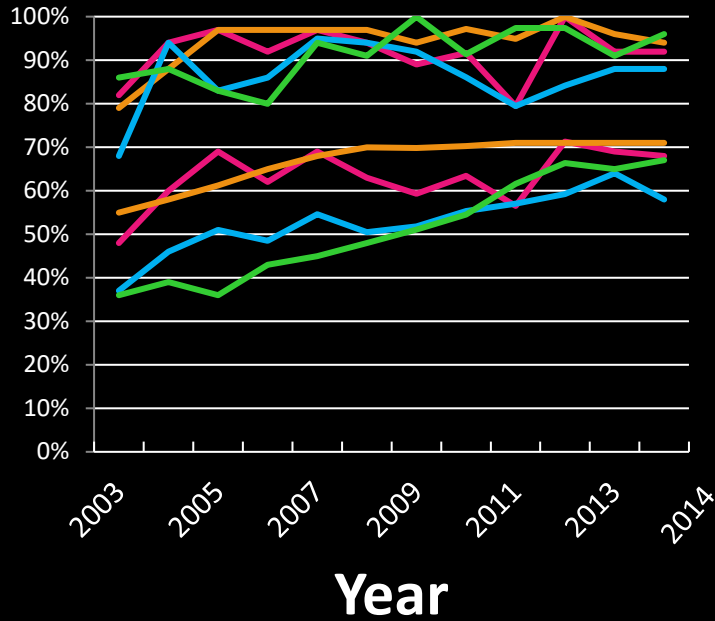
- Parent and Alumni Feedback

- Parent feedback consistently reports positive gains of students.
- Alumni feedback shows preparedness and strengths of EAS graduates.



Historical MSP Data

% Students Meeting Standard



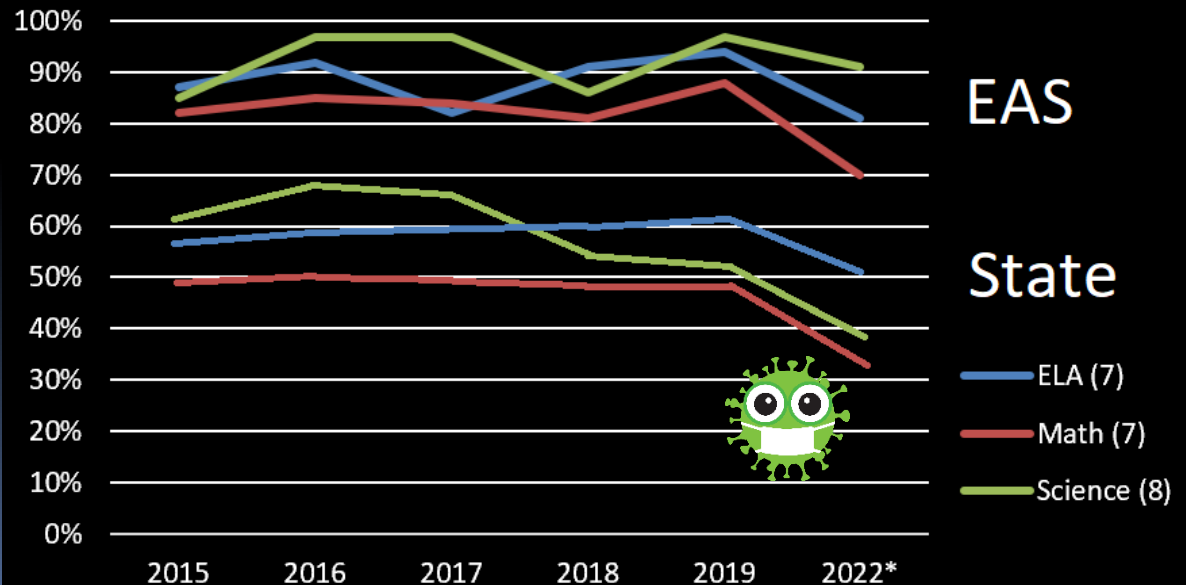
EAS

State

- Reading (7)
- Writing (7)
- Mathematics (7)
- Science (8)

History of Strong Assessment Performance

Historical SBA Data



EAS

State

- ELA (7)
- Math (7)
- Science (8)





Expanding Learning

- Adventure Education Excursions
- Community Stewardship Projects
- Leadership Development
- Annual Healthy Choices Fair
- Extensive parent participation



Why Adventure Education?

- Positive School Climate
- Academic Growth
 - Learning in context
 - Application of skills
- Personal Gains
 - Self confidence
 - Leadership & Teamwork
 - Relationships
 - Service to community
 - Connections to Nature



Adventure Excursions

3 Week-long Trips Focusing on Learning, Adventure, and Service

- ❑ Fall Camp Hamilton
- ❑ April Adventures
- ❑ End of Year Camping Trip



Fall: Camp Hamilton

- Building Community
- Leadership Training
- Integrating 6th Graders



Camp Hamilton



April Adventure Trips

- 5-6 Trips Offered by Teachers
- Focus on Environments and Cultures
- Teamwork Skills



April Adventures



End of Year Camping Trip at Bowman Bay

- Leadership for 8th Graders
- Culmination of Year
- Stewardship Project



Bowman Bay (at Deception Pass)



Community Stewardship Projects

- 3 Projects each year per student
- 100+ hrs per student over 3 yrs.
- To date 116,420 hours toward environmental and social needs in our community!



Community Stewardship Projects





Wednesday Electives: Exploring Areas of Interest & Learning from Community & Parent Experts

Sports

Orienteering, Climbing, Fencing, Team Sports

Arts and Crafts

Knitting, Sewing, Sculpture, Calligraphy, Pottery, Cooking

Creative Expressions

Music, Drama, Improvisation, Yearbook

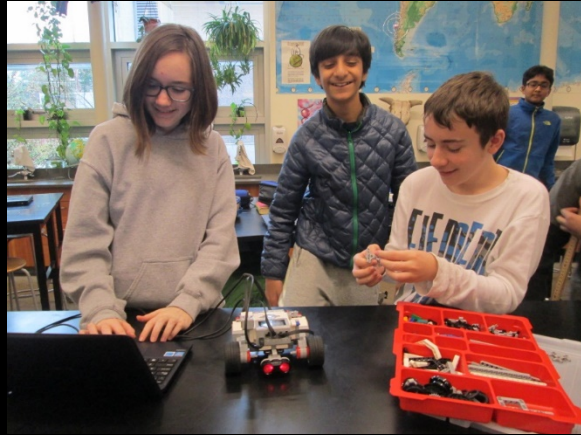
Technology

Digital photography, Programming, Robotics

Student-Generated

Strategy Games, Rube Goldberg Devices, Magic

Wednesday Electives



Importance of Experiential Ed

Adventure Education (camps and trips), Community Stewardship, and Wednesday Electives are core components of overall academics at EAS. Students may not opt out of these essential components of the EAS integrated curriculum. Our experiential ed experiences are directly tied to classroom learning.



Extracurricular Opportunities

- Clubs/Groups
 - Leadership
 - TSA
 - Equity Team
 - Green Team
 - Science Bowl
 - Literature Club
 - Dr. Who Club
 - Yearbook
- Finn Hill Sports Teams
- Orienteering
- Finn Hill Jazz Band



The EAS Family

Students as Leaders & Mentors

Community Partnerships

Family Involvement



Outcomes

- Strong leaders and team members
- Self-starters and initiators
- Confident presenters
- Ownership in learning
- Connections with students throughout district
- Lasting connections beyond secondary education



Importance of Commitment

- Major decision — BOTH family AND student should agree on attending EAS
- Commitment —
 - Students: academic and program expectations
 - Families: volunteer participation for the full three years





EAS Student Application Process

Before Lottery:

1. Parent(s) attend EAS Information Night
2. Carefully review EAS website, specifically Admission page
3. Submit Online Application (due by 11:59 pm on Friday, December 2nd)

****EAS will be admitting 46 sixth graders for Fall 2023****

After Lottery:

1. Lottery notifications sent from district office on January 13th
2. Acceptance due to EAS by January 25th (lottery #1 – 46)
3. Waitlisted students (#47 and higher) contacted for placement after January 25th will have 24 hours to accept or decline placement.
4. School tour (student and parent) and complete registration packet to finalize enrollment.

Breakout Rooms

Ask EAS staff, parents, and students questions!

- Curriculum
- Excursions and CSPs
- The Student Experience
- Transportation
- Clubs, sports, and activities
- PTO information
- Volunteering and family donation

