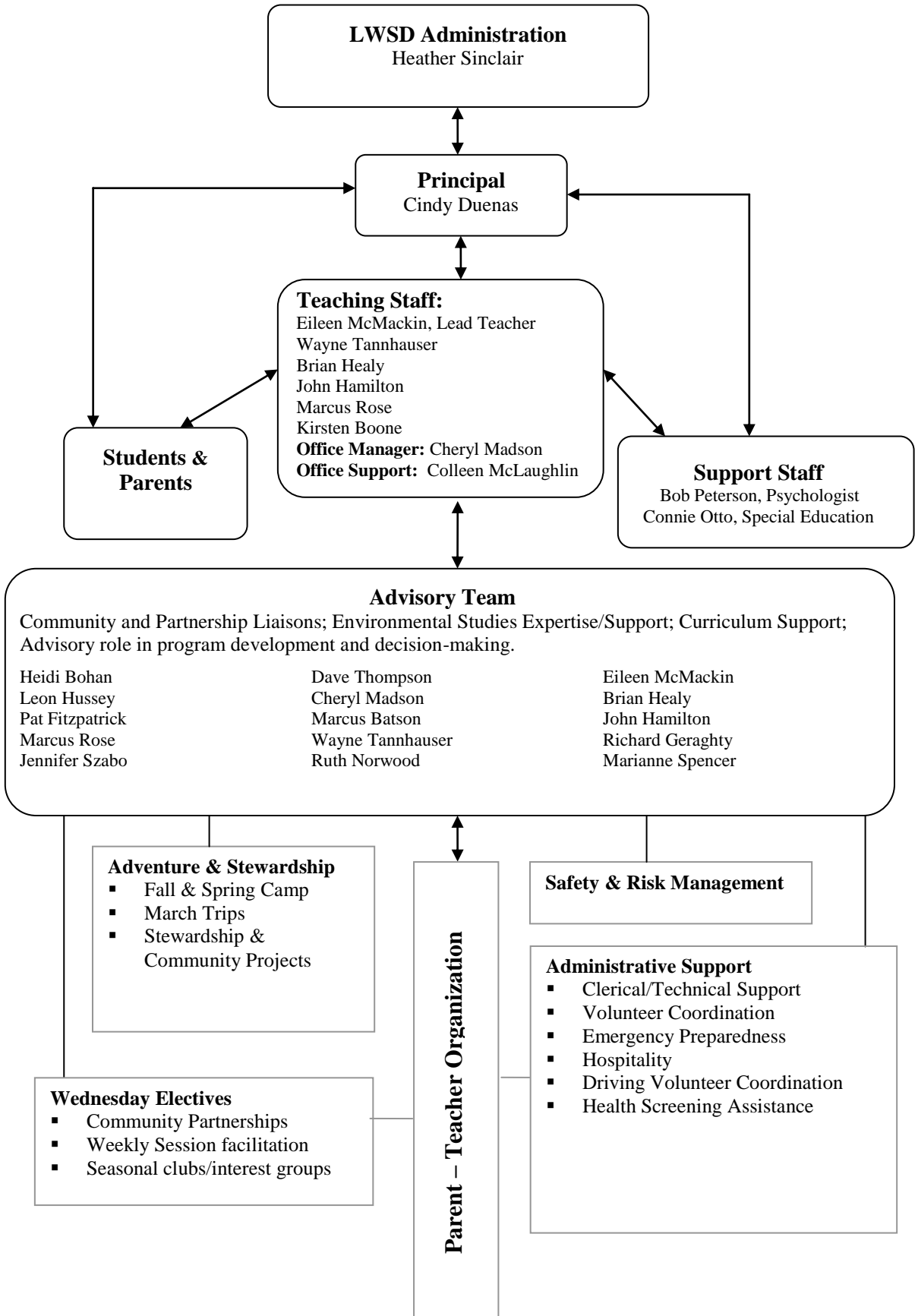


Environmental & Adventure School Governance Process



LWSD Administration
Heather Sinclair

Principal
Cindy Duenas

Teaching Staff:
Eileen McMackin, Lead Teacher
Wayne Tannhauser
Brian Healy
John Hamilton
Marcus Rose
Kirsten Boone
Office Manager: Cheryl Madson
Office Support: Colleen McLaughlin

Students & Parents

Support Staff
Bob Peterson, Psychologist
Connie Otto, Special Education

Advisory Team

Community and Partnership Liaisons; Environmental Studies Expertise/Support; Curriculum Support; Advisory role in program development and decision-making.

Heidi Bohan
Leon Hussey
Pat Fitzpatrick
Marcus Rose
Jennifer Szabo

Dave Thompson
Cheryl Madson
Marcus Batson
Wayne Tannhauser
Ruth Norwood

Eileen McMackin
Brian Healy
John Hamilton
Richard Geraghty
Marianne Spencer

Adventure & Stewardship

- Fall & Spring Camp
- March Trips
- Stewardship & Community Projects

Wednesday Electives

- Community Partnerships
- Weekly Session facilitation
- Seasonal clubs/interest groups

Parent - Teacher Organization

Safety & Risk Management

Administrative Support

- Clerical/Technical Support
- Volunteer Coordination
- Emergency Preparedness
- Hospitality
- Driving Volunteer Coordination
- Health Screening Assistance