



Wolves!

Eastlake High School

Parent Handbook
2010-2011

Eastlake High School

Parent Handbook – General Information

Eastlake High School
400 228th Ave. N.E.
Sammamish, WA 98074
www.lwsd.org/ehs

General Information

Administration	425 936-1500
Attendance	425 936-1539
Counseling	425 936-1522

Directory

*If you are visiting us, please sign in with the main office.
Visitor parking is located in the front parking lot.*

Eastlake High School PTSA

Executive Committee / Board and Committee Chairs 2010-2011

<u>PRESIDENTS</u>	Haleh Farsad	president@ehsptsa.org	369-2465
	Conni Walsworth	president@ehsptsa.org	836-5645
<u>SECRETARY</u>	Kerri Neilsen	secretary@ehsptsa.org	868-9984
<u>TREASURER</u>	Sandra Stull	treasurer@ehsptsa.org	837-9565
<u>VP Communications</u>	Nicole Barlow	communications@ehsptsa.org	868-6022
	Cherish Whyte	communications@ehsptsa.org	898-1571
Constant Contact/Newsletter	Nicole/Cherish	newsletter@ehsptsa.org	
Website - EHSPTSA.ORG	Betty Chinn	webmaster@ehsptsa.org	868-0442
programs(speaker)		programs@ehsptsa.org	
<u>VP- VOLUNTEERS</u>	Linda Tantillo	volunteer@ehsptsa.org	868-8037
Summer Packet Assembly	Mina Mann	volunteer@ehsptsa.org	391-7886
Awards and Recognition	Carole Britain	awards@ehsptsa.org	802-9263
	Suzanne Spinelli	awards@ehsptsa.org	242-0546
Staff Appreciation	Alison Cushing	appreciation@ehsptsa.org	836-8130
	Elaine Benveniste		
Scholarships	Susie Hindle Kher	scholarships@ehsptsa.org	223-6758
4.0 Student Recognition	Anne Holmdahl	4.0student@ehsptsa.org	836-2942
	Kathy Perry	4.0student@ehsptsa.org	
Membership	Patty Pacelli	membership@ehsptsa.org	868-1739
Student Directory (Data)	Patricia Stevens	directory@ehsptsa.org	836-8480
Student Directory (Ads)	Patty Pacelli	directory@ehsptsa.org	868-1739
<u>VP- GRAD PROGRAMS</u>		gradprograms@ehsptsa.org	
Baccalaureate	Dianne Discolo	baccalaureate@ehsptsa.org	
Senior Fund Raising			
Senior Send Off Tickets	Beth Gledhill	rsendoff@ehsptsa.org	868-7136

Senior Project Refreshments		sprojrefresh@ehspts.org	
Senior Apparel	Iris Grasst	srapparel@ehspts.org	868-7741
Senior Send Off	Gayle Adams	srsendoff@ehspts.org	313-2491
	Lynda Kelly	srsendoff@ehspts.org	
	Sue Hawkinson	srsendoff@ehspts.org	868-0940
<u>VP- WAYS & MEANS</u>		waysandmeans@ehspts.org	
Holiday Bazaar	Kim Easthouse	bazaarinfo@ehspts.org	241-1067
Holiday Bazaar Bake Sale		bazaarinfo@ehspts.org	
Raffle tickets	Patricia Stevens	raffle@ehspts.org	836-8480
Recognition Wall - Tiles	Sue Hawkinson	walltiles@ehspts.org	868-0940
Pass The Hat	Sue Hawkinson	passthehat@ehspts.org	868-0940
"Fear Free" SAT/ACT PracticeTest	Susie Hindle Kher	fearfree@ehspts.org	223-6758
<u>LEGISLATIVE CHAIR</u>		legislative@ehspts.org	
<u>COMMUNITY LIAISON</u>	Michelle Armour	liaison@ehspts.org	
Community Service	Mary Kayser	commservice@ehspts.org	836-8849
Special Needs	Chris Rostas	specialneeds@ehspts.org	657-0302
	Joanne Hiebert	specialneeds@ehspts.org	836-0750
Teacher Representative		teacherrep@ehspts.org	
Student Representative	Sierra Nolan	studentrep@ehspts.org	
	Meredith Lavergne	studentrep@ehspts.org	
Emergency Preparedness	Carol Salvage	safety@ehspts.org	897-0708
	Sue Wood	safety@ehspts.org	961-0665
Reflections	Denise Radeke	reflections@ehspts.org	898-1168
	Laura Hamilton	reflections@ehspts.org	896-8646
<u>SENATE REPS</u>	Ned Menninger	senaterep@ehspts.org	836-1367
	Laura Franklin	senaterep@ehspts.org	836-7708
<u>Homeroom Rep</u>	Gayle Adams	homeroomrep@ehspts.org	313-2491
	Mary Kayser	homeroomrep@ehspts.org	836-8849

Eastlake Administration & Office Staff

Main Office - Melinda Anderson, Receptionist	425 936-1500
Attendance Line	425 936-1539
Brad Malloy, Principal	425 936-1500
bmalley@lwsd.org	
Alex Alexander, Associate Principal	425 936-1500
dalexander@lwsd.org	
Chris Bede, Associate Principal	425 936-1500
wbede@lwsd.org	
Brent Kawaguchi, Athletic Director	425 936-1510
bkawaguchi@lwsd.org	
Emily Borden, Activities Coordinator	425 936-1500
eborden@lwsd.org	
Susan Brinck, Counseling Secretary	425 936-1522
Carolyn Carey, Athletic Secretary/Facilities Usage	425 936-1524
Debus Frey, Attendance Secretary	425 936-1539
Kathy Friedrich, Bookkeeper	425 936-1504
Lori Rowe, Office Manager	425 936-1503

Tina Thomas, Theatre Manager	425 936-1528
Andrea Wehner, Career Specialist	425 936-1521
Eastlake Office Fax	425 936-1509
Counseling and Career Center Fax	425 936-1540
Dana Nasby, Senior Project Coordinator	425 936-1500
Lake Washington School District	425 936-1200

LWSD Board Administration

Board of Directors

(EHS Attendance Zone)

Doug Eglington 425 868-7218

District Administration

Dr. Chip Kimball, Superintendent 425 936-1200

Eastlake Faculty

The "formula" to use for contacting a staff member by email is: The first initial & last name@lwsd.org *An example:* bmalley@lwsd.org. There are a few exceptions to this rule, and these have been noted below when the exception applies.

Last Name	First Name	Dept	Email Address
Agnew	Kevin	Humanities	
Alexander	Alex	Assoc Principal	dalexander@lwsd.org
Anderson	Melinda	Receptionist	meanderson@lwsd.org
Anderson	Randall	Para Ed	
Andres	Kalle	Humanities	
Austin	Matt	Humanities	
Bahnsen	Holly	Math	
Bates	Kathy	Special Ed	
Bede	Chris	Assoc Principal	wbede@lwsd.org
Belcher	Rich	Humanities	
Bennett	Lisa	Head Custodian	
Beresford	Shawna	Counselor	
Bjorge	Krista	Science	
Borden	Emily	Science	
Brinck	Susan	Registrar	
Carey	Carolyn	Athletics	
Carrell	Pamala	Secretary	
Celms	Sara	BMAC Para	
Chamberlin	Suzanne	Art	
Chan	William	Custodian	

Chapin	Stan	Resource Officer	
Chea	Phang	Custodian	
Clauson	Marc	Science	
Cook	Yvette	Counselor	
Cooke	Alexa	Special Ed	
Dales	Eugene	PE	
Damico	Michele	Humanities	
Don Chokr	Sandra	Wld Lang	
Doss	Richard	Custodian	
Egashira	Alicia	Wld Lang	
Emerson	Greg	Math	
Engdahl	Rae Ann	Humanities	
Epeneter	Susan	Counselor	
Fabish	Diane	Special Ed	
Fisher	Darin	Humanities	dafisher@lwsd.org
Frey	Debra	Attendance	
Friedrich	Kathleen	Bookkeeper	
Gallagher	Matthew	Campus Security	
Galloway	Erin	BMAC Para	
Garsi	Maria	Athletic Trainer	
Gavin	Tracy	Para Ed	
Hall	Wendy	Special Ed	
Hardtke	Tyrell	Science	
Hargrave	Kathy	Art	
Harris	Valerie	Music	
Harrison	Leticia	Para Ed	
Haycox	Mary	Para Ed	
Hearn	Sandy	BECCA	
Hecht	David	Humanities	
Henselman	Marilyn	CTE	
Hiemstra	Lindsey	Psychologist	
Hinman	Gary	Humanities	
Hintze	Kathleen	Cataloger	
Hollingworth	Lara	Science	
Horner	Rachelle	Humanities	
Horton	Lorraine	IA - CTE	
Houghton	Janet	Counselor	

Isenhower	Molly	Office Asst	
Jenks	Shannon	Science	
Jones	Rob	Humanities	rojones@lwsd.org
Jones	Cally	Special Ed	
Jones	Deborah	IA	debjones@lwsd.org
Jones	Steven	Math	
Kanuparth	Raji	Para Ed	
Kawaguchi	Brent	Athletic Dir	
Keller	Kirsten	Counselor	
Keogh	Molly	IA - Stu Store	
Klug	Kathryn	Science	
Lerner	Debbie	RSAR Secretary	
Macchiarella	Jennifer	Humanities	
Magnuson	Gabriela	IA	
Malloy	Brad	Principal	
Martin	Shalika	Sign Interpreter	shmartin@lwsd.org
Martinez	Kristi	Science	
Matuschenko	Kathy	IA Sped	
McCary	Kate	PE	
McGibney	David	CTE	
Meilleur	Elise	Wld Lang	
Menino	Genevieve	CTE	
Monahan	William	Science	
Nasby	Dana	Humanities	
Nelson	Rebecca	Humanities	renelson@lwsd.org
Norris	John	Humanities	
Norris	Sara	Humanities	
Olson	Kirsten	Math	kiolson@lwsd.org
Ostlie	Kyle	Math	
Pacheco	Carly	Special Ed	
Peterson	Bud	Humanities	erpeter@lwsd.org
Pitt	Kristin	Data Processor	
Retzlaff	Rory	Science	
Rogers	Judi	Music	
Rowe	Lori	Office Manager	
Schneider	Patricia	IA - Bldg	
Sherertz	Nancy	Librarian	

Simon	Jennifer	Math	
Skiba	Sherilynn	Math/504	
Spichak	Andrey	Music	
Stratton	Andy	Math	
Thomas	Tina	Theater Mgr	tithomas@lwsd.org
Thompson	Linda	Humanities/Art	
Timofte	Mariana	Math	
Tomtan-Brayman	Brenda	Special Ed	
Van Herk	Sarah	Wld Lang	
Vogt	Linda	Music	
Ward	Douglas	Humanities	doward@lwsd.org
Wehner	Andrea	Career Couns	
Wesson-Mast	Cassie	Math	
Whaley	Judith	Para Ed	
Wikrent	Brian	Science	
Williams	Jacalyn	Special Ed	jawilliams@lwsd.org
Williams	Karen	Wld Lang	
Wright	Kathy	CTE	

Welcome Eastlake Parents

Welcome to the 2010-1011 school year! Our staff is highly trained, empathetic, and committed to our students' all-around success. Eastlake has a fine history of academic and extra-curricular accomplishments. We are looking forward to helping your student explore and achieve his/her educational goals.

Your child will benefit most by becoming actively involved in the wide variety of programs, activities, and athletics we have to offer. We welcome the opportunity to work with you and your family throughout your child's high school years.

If at any time during the school year certain problems or concerns arise that should be brought to our attention, please remember that our doors are always open and we are here to help you.

Sincerely,

Brad Malloy
Principal

Alex Alexander
Associate Principal

Chris Bede
Associate Principal

The Eastlake Beliefs

We believe Eastlake High School provides purposeful, relevant, and challenging activities that enhance student learning.

We believe Eastlake High School provides a safe, caring, and healthy environment that promotes freedom of thought and respect for the diversity of others.

We believe Eastlake High School students learn to live in a diverse world with a vision toward the future and an appreciation of humanity's cultural heritage.

We believe Eastlake High School ensures that each student graduates with the skills, attitudes, and knowledge to be a contributing member of society and a lifelong learner.

We believe Eastlake High School has the flexibility to meet the varied needs of its students through techniques and settings.

We believe Eastlake High School is a student-centered learning environment where each student has an adult advocate.

We believe Eastlake High School students can achieve excellence in an environment where they, with the help of teachers, parents, and community, share responsibility for the development and wellness of themselves.

We believe Eastlake High School recognizes, appreciates and encourages creativity as an integral part of every student's educational experiences.

We believe Eastlake High School students should become active participants in a commitment to the present and future health of our Earth.

We believe at Eastlake High School that technology is an important educational resource that helps students succeed in a rapidly changing world.

We believe at Eastlake High School that an integrated curriculum promotes student learning.

Estlake Communication Resources

Eastlake High School has a variety of communication resources for parents regarding school, PTSA, and District news.

Eastlake High School Web hosts a wide variety of information regarding administration, faculty and their classroom websites, counselors, sports with all eligibility forms, course catalog, PTSA, clubs, activities, parent and student news. This site is updated regularly. The address is:
<http://www.lwsd.org/school/ehs/Pages/default.aspx>

Eastlake Weekly Update is a publication that is sent directly to parents each week that highlights the following week's news. The Update covers: club and activity meeting dates, homeroom agenda, weekly schedule, classroom projects, news specifically for sophomores, juniors, and seniors, upcoming dates for practice exams such as PSAT or SAT, college visits, counselor news, and a variety of other news. This is a great source of information for parents who like to mark their calendars for the following week. This publication is sent each Friday morning directly to parents e-mail address—it goes to the primary parent listed on their son or daughter's

account. It can also be accessed through the EHS Web site:
<http://www.lwsd.org/school/EHS/Pages/Weekly-Update.aspx>

PTSA Web Site and Wolf Tracks supports school and community information. The bulletin “Wolf Tracks” is sent directly to parents each Monday with a variety of news from volunteer support/help, upcoming events, membership meetings, and a host of other information. To access this information and additional news go to their web site at: <http://www.ehsptsa.org/>

Connections – LWS D Parent-E-Newsletter. This information comes directly from Lake Washington School District central office. This E-Newsletter is sent directly to your e-mail. Parents have an opportunity to read about other schools, district plans, and other pertinent information. If you are not receiving the **Connection** go to the LWS D Web site and go to the “Parent” tab on the top of the web site.
<http://www.lwsd.org>

Parents and EHS Faculty Communication

Operating Principles:

- Treat each other with respect.
- Speak truthfully and professionally.
- Demonstrate personal integrity and dignity.
- Focus on issues, not people.
- Keep conversations private.
- Go to the source.
- Seek to understand

Resolving Conflict

We go directly to the source to discuss an issue: If a student has an issue with a teacher, the student discusses the problem with the teacher. If there is a need to further the discussion, the student will ask a parent or advisor to contact the teacher.

We attempt to solve the problem at one level before moving to another. If the parent and/or teacher feel that they are not resolving the issue, they may proceed to the next level, the student’s administrator.



Talk in person and in private. Phone calls are one way of communicating. All teachers have voicemail and will return calls within 72 hours. If a teacher has provided his/her home phone, please make calls prior to 7:00 pm. Some teachers prefer email as a communication tool. Teachers will make every effort to return emails within 72 hours.

Student Referrals

Parents can contact teachers directly and set up a meeting to discuss a student’s progress in a particular class. However, if parents have an overall concern about a student, whether academically or socially, they can contact that student’s Counselor or Administrator and they will determine the appropriate intervention system. This could include a referral to Guidance Team, Student Intervention Team or the Drug and Alcohol Counselor.

Parent’s Rights

Parents Have Rights Including But Not Limited to the Following:

-  To be met with respect by all school personnel.
-  To be free from discrimination by reason of race, creed, color, marital

status, sex, age, national origin, handicap, membership, or non-membership in organizations.

- ✦ To be informed of rules that students are expected to follow.
- ✦ To expect due process shall be observed in matters of discipline.
- ✦ To be informed of alternative programs which are available.
- ✦ To be informed of the procedure for scheduling a conference and getting a student progress report.
- ✦ To review all written records of their child unless the student is 18 years of age or older and is not considered to be a dependent of the parent.
- ✦ To expect school staff to recognize the importance of parental involvement in decisions related to the education or welfare of their children.
- ✦ To receive information regarding graduation requirements and post high school opportunities prior to ninth grade registration or at the time of a later enrollment.
- ✦ To schedule visits to schools and classes through a contact with a teacher, counselor, or building administrator.
- ✦ To enroll a child in a school other than the one in his/her home attendance area by using the district open boundary procedures.
- ✦ To request placement of a child in a class.
- ✦ To initiate a grievance against a staff member using the appropriate procedures and forms.
- ✦ To review materials and state an objection to same using the appropriate procedures and forms.
- ✦ To be actively involved in the decision-making processes related to the improvement of instruction.

Parent's Responsibilities

- ✦ To be aware of their student's progress based on the objectives of the subject area and school.
- ✦ To respond to reports from school concerning their children.
- ✦ To share the responsibility of their student's attendance with the school.
- ✦ To instill in their children respect for constituted authority.
- ✦ To instill in their children respect for public and private property and make restitution in situations where it is justifiable.
- ✦ To be responsible for and to cooperate with the school in the maintenance of their student's mental and physical health.

Schedule Change Procedure (Aug 2010):

Schedule changes are possible starting Wednesday, September 1st, if the schedule change is due to one of the following reasons:

- ✦ Incomplete schedule (1st semester only) - fewer than 6 classes.
- ✦ Incorrect Placement—for example, incorrect World Language class or change in math placement due to 2nd semester 2010 grade or summer school attendance.
- ✦ Missing a class required for graduation (seniors only).

Schedule Change Timetable:

Thursday, September 2nd and Friday, September 3rd —Students with problems (incomplete schedule, incorrect placement, or missing requirement for graduation)

will come to the counseling office *during the period in which there is an issue* (for example: a student with no class during 4th period would come to the counseling office *during 4th period*).

PLEASE NOTE:

- ✚ Seniors must see their own counselor - no exceptions.
- ✚ Students must come to the counseling office on their own; there are no TA's to deliver call slips as yet.
- ✚ Not getting an elective the student wanted or signed up for is not an appropriate schedule problem at this time, no matter what the elective. This situation will be dealt with later.

Friday, September 10th is the last day to drop classes for 1st semester without penalty. Any drop after that date will be with a letter grade of "F", whether or not the student is passing at the time of the drop.

Student-Initiated Changes:

Student-Initiated class changes will only be allowed for the following reasons and require a completed "Request for Class Change" form:

- ✚ Incomplete Schedule (1st semester only) - fewer than 6 classes.
- ✚ Incorrect Placement—Incorrect World Language level or math placement.
- ✚ Course on class schedule was not requested during registration.
- ✚ Request for TA or Peer Tutor (with appropriate signatures).

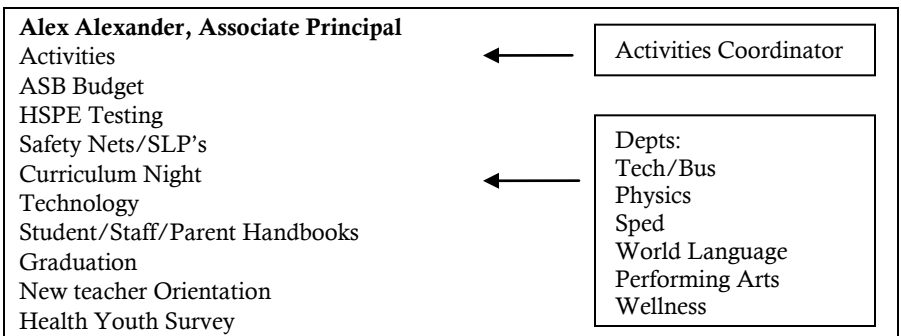
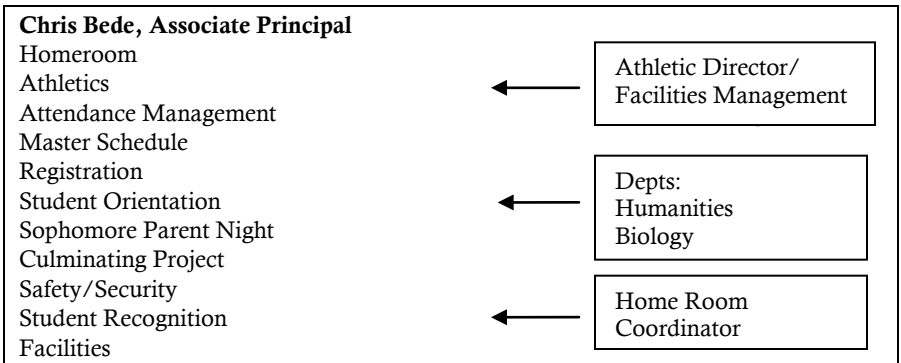
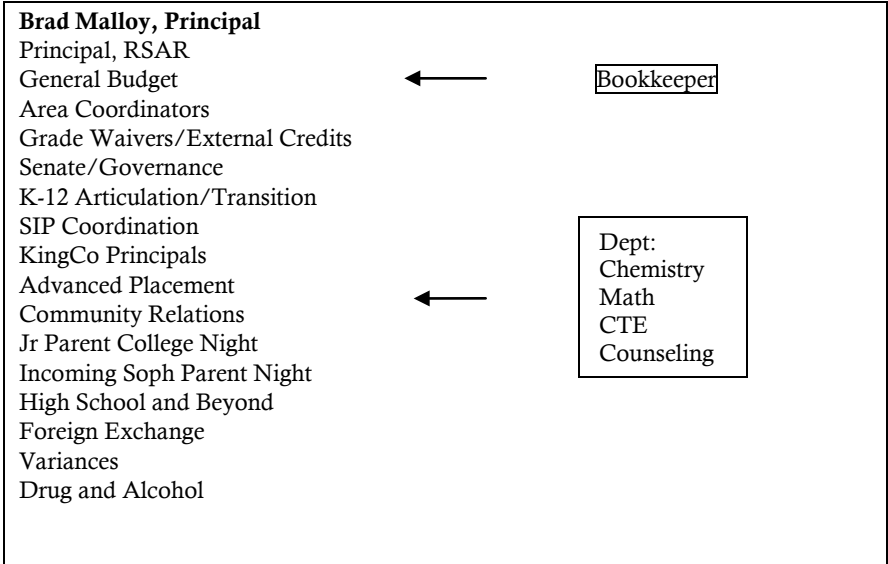
Students must fill out "Request for Class Change" form and turn it in to Mrs. Anderson in the main office. If approved, the student will be called into the counseling center to discuss the change. If not approved, an administrator will e-mail the student on the student's district e-mail account. The adjustment is not guaranteed, however, since it can only be made if the requested class is available.

AP Information:

Many benefits accrue from enrolling in challenging AP classes. College-level work is standard, sound work habits are a must, and mental acuity and reasoning skills are encouraged. In addition, admissions officers at top-tier colleges expect avid learners to challenge themselves by enrolling in rigorous high school classes.

These courses are designed to provide students with the analytical skills, essay writing fundamentals, and factual knowledge necessary to deal critically with the problems and issues related to specific subject areas. Additionally, the courses prepare students for the AP examination. The aim of the courses is to provide students with a learning experience equivalent to that obtained in most college introductory courses. Successful completion of the AP examination may result in students obtaining college credit. EHS has the following AP courses for 10-11: AP American History, AP Biology, AP Environmental Science, AP Calculus, AP Chemistry, AP Statistics, AP English, AP French, AP Spanish, AP Government, AP Studio Art, and UW Composition. Registration and prerequisite information for these classes is available in January.

Administrative Model



Shared Duties

Attendance/Discipline
Learning Community Work
Level V
Staff Development
Staffing/Hiring
Supervision/Evaluation
Prof Learning Communities
Communications

Student Handbook Changes

During the school year, it may become necessary to change or make additions to this student handbook. When this takes place, you will be notified by an announcement. If situations occur that are not covered in the student handbook, the school administration will make decisions based upon the merits of the individual case. The primary purpose of these rules and regulations is to foster an atmosphere conducive to learning and increased student responsibility.

Attendance Information & Guidelines

Regular school attendance enhances academic, social, and vocational development. Students who attend school regularly generally achieve higher grades, enjoy school to a greater degree, and are more successfully employed after graduation. Students, in cooperation with their parents, have the responsibility for establishing and maintaining prompt and regular attendance as prescribed in the Compulsory Attendance Law of the State of Washington for RCW 28A.27.01.

Eastlake High School students are responsible for attending all scheduled classes each day. A total of six absences per class per semester is permissible if the absences are excused by a parent or guardian within 72 hours of the absence. A student will lose credit if he/she accumulates more than six absences per class per semester **and one or more of the absences are unexcused**.

When a student accumulates his/her seventh absence in a class in one semester and has lost credit in the class, the student has the right to appeal to the Attendance Appeals Committee for possible reinstatement of credit. **Note: The student is still expected to attend the class and do all assigned work.** The Attendance Appeals Committee is made up of a least one student, parent, and staff member. The student may bring parents, teachers, or other advocates to the appeal and should be prepared to discuss why his/her credit should be reinstated. The appeal committee will either uphold loss of credit or reinstate credit with attendance and/or performance conditions. A student who is denied credit will receive a “no credit” (NC) if he/she has a passing grade at the end of the semester. The student will receive an “F” if he/she does not pass the class at the end of the semester.

In order to receive “excused” status for an absence, a written statement or telephone notification from the student’s parent/guardian must be filed with school personnel within 72 hours following the student’s return to school. Notes shall be received by the attendance secretary and will be kept in the student’s file. The attendance office phone number is 425-836-6639.

Excused absence:

Student absence may be excused for illness and for “unique circumstances that may constitute legitimate excuses for absences.” These are:

- Student illness
- Medical/dental appointments
- Out of town trips with parents, (necessary and pre-arranged when possible.)
- School arranged absences

Examples: Death in immediate family. Acts of nature (flood, fire, etc.) religious observance, field trips, college visits, court proceedings.

Unexcused absence:

Student absence is unexcused for avoidable events, those that can be scheduled outside school time.

Examples: Oversleeping, traffic, missed bus, test or homework, job training, work, child care, driver’s test, shopping, hair appointment, veterinarian appointments, not prepared for test.

Absences for school-sponsored activities will not count towards the total number of absences. A student may have up to two absences for college/university visits per school year. Official confirmation by the college or university must be provided for these absences to be considered school-sponsored.

Absences should be pre-arranged by written request when parents have advance knowledge of impending absences. The criteria listed above will determine whether the absence/tardy will be excused. No teacher is obligated to provide make-up work for a student who misses class due to an unexcused absence.

Students, not school personnel, are responsible for providing timely information in regard to absences for which an excused status is requested. Teachers may mark a student absent if the student is more than ten minutes late to class.

If a student needs to be excused during the day for an appointment, he/she must bring a note from a parent to the attendance secretary before school. The attendance secretary will give the student a pass to leave school at the requested time. Because it disrupts the educational process, messages will not be delivered to classrooms during class time. If a parent needs to leave a message for a student, the message can be left with the receptionist, and the student can be paged at the end of the school day.

The following parent notifications are made for all students with regard to absences:

- Skyward Messenger will call between 5 – 9 pm on the day of an unexcused absence.
- At 3 absences in a class, with one or more unexcused, students are notified.
- At 5 absences in a class, with one or more unexcused, parents are notified via email.
- At 7 absences in one class, with one or more unexcused, a students receive a letter stating that they have lost credit.

Homework Requests Procedure

After three consecutive days of absences, a student or parent is encouraged to call the office after 9:00 am or email the teacher to request that homework be obtained to be picked up the next day. Upon returning to school, the student is responsible for checking in with teachers in order to make up outstanding assignments.

Extenuating Circumstances

On occasion, extenuating circumstances beyond a student's control may cause him/her to incur more than six absences per class per semester. At these times, it is important for the student and parents to work closely with the student's administrator. Each situation will be handled individually.

Tardiness

Students are expected to be in their classrooms on time and prepared to begin working. Teachers will maintain records of student tardiness. After 10 minutes, a tardy may become an absence. A teacher may convert 4 tardies to an unexcused absence, provided that it is noted in the class syllabus.

Truancy

Truancy, or any instance in which a student is absent from any class without either parent, teacher, or administrative permission, will be handled as a disciplinary matter.

Becca Law

In 1995, the State Legislature implemented the Washington Compulsory Attendance Law. The law requires all parents, guardians, or other legal custodians of juveniles to ensure that children between the ages of 6 and 18 attend school. Parents violating this requirement may be required to pay a \$25 fee per day unless they can show reasonable diligence in attempting to get the student to attend school. The "Becca Law" also requires the District to:

1. Schedule a conference with parents after two days of unexcused absences/truancy.
2. File a petition with the county court (*may* after the 5th unexcused absence/truancy in a month, *must* after the 7th in a month or the 10th in a year).
3. Report any additional unexcused absences.

After a petition is filed, the student is required to appear in court and will then be under the court's jurisdiction.

Behavioral Expectations of Students

We believe that student development occurs best within an atmosphere of mutual respect, and therefore any behavior that undermines this respect cannot be allowed. Teachers, administrators, and staff will not tolerate any behavior that materially interferes with or is detrimental to the orderly operation of school, school-sponsored activities or any other aspect of the educational process. School jurisdiction and authority include student conduct to and from school, at school, on adjacent property, at bus stops, on busses, and at any school sponsored activity. Also included

in the school's jurisdiction is any off-campus student speech or activity which school authorities have reason to believe will interfere with the work of the school or impinge on the rights of other students or staff at school. Such acts, including but not limited to those listed in this handbook, shall be subject to discipline, including possible suspension and/or expulsion from school, and /or referral to law enforcement authorities.

Student Rights and Responsibilities

We believe for every right there is a responsibility. This responsibility includes the freedom to exercise your rights in a manner that is not offensive to the recipient. We trust students will respectfully accept and adhere to the following:

Rights

- Students have the right to a safe environment free from intimidation, sexual harassment, and assault.
- Students have the right to a productive learning environment.
- Students have the right to clean and safe classrooms, hallways and lunchrooms.
- Students have the right to safe passage to and from school and while on campus.
- Students have the right to expect staff to help solve their problems.
- Students have the right to engage in the grievance process.
- Students have the right to remain anonymous when reporting a violation of school rules.
- Students have the right to engage in respectful speech that expresses their thoughts and opinions as long as it is not disruptive to the educational environment.
- Students have the right to actively participate in a problem-solving process in order to facilitate successful closure.
- Students have the right to exercise freedom of expression as part of the instructional process. However, this freedom is subject to reasonable regulation and may not be used to disrupt the educational environment or interfere with the rights of others.

Responsibilities

- Students are responsible for their own behavior.
- Students are responsible for respecting school property and personal belongings.
- Students are responsible for attending school and all classes daily and on time.
- Students are expected to exhibit conduct which is courteous, cooperative, and responsible, and which displays regard for the safety and welfare of others, including students, staff, and substitutes at school and all school related activities.
- Students are responsible for being prepared for class; i.e., bringing appropriate and necessary materials to class on a daily basis.
- Students are responsible for informing staff of behavior which may be harmful to an individual or themselves.

Progressive Discipline

The school encourages Progressive Discipline to correct undesirable/unacceptable behavior, attendance, or attitude problems whenever reasonably possible.

Progressive Discipline is the process used to correct student behavior problems and teach the student to function in an acceptable manner.

Progressive Discipline attempts to relate the imposed disciplinary action or intervention to the severity of the offense and the number of times that offense (or accumulated offenses) has occurred. Students who violate a rule the first time face disciplinary action commensurate with the violation. Second violations will result in stronger disciplinary action. Repeated violations may result in severe disciplinary action or suspension. At each intervention step, the intention is to assist the student in identifying the problem, understanding what new behavior is necessary, and encouraging him/her to accept responsibility for his/her actions.

The goal of the Progressive Discipline approach in the Lake Washington School District is to encourage the students to:

- Correct inappropriate or unacceptable behavior;
- Develop better understanding of the problem and the need for behavior change;
- Accept responsibility for their actions;
- Make the necessary or desirable change in their behavior;
- Provide an opportunity to demonstrate improvements and personal growth, and;
- Plan for and make appropriate choices conducive to school success.

Discipline procedures range from conferencing with students, parents and/or guardians to suspension and expulsion. Definitions related to these different options include:

Discipline: Any form of corrective action taken other than suspension and expulsion. This may include community service (CS), exclusion from class during the school day, after school detention, restitution, assessment/counseling as appropriate.

Suspension: Denial of right of attendance for a specific amount of time; short-term suspensions (STS) are for no more than ten consecutive school days; long-term suspensions (LTS) exceed ten consecutive school days; in-house suspension (IHS) allows students to attend school but limited to the in-house room.

Expulsion: Denial of right of attendance for an indefinite amount of time will be used only when the nature and circumstance reasonably warrant the harshness of expulsion.

Emergency Expulsion (EE): When the student's presence imposes an immediate and continuing danger to the student, other students or school personnel, or an immediate and continuing threat of substantial disruption to the educational process. An emergency expulsion may be imposed to allow administrators to fully investigate the situation and impose any appropriate disciplinary or corrective action.

Students who create a disruption of the educational process in violation of our building standards may be excluded from a classroom for all or any portion of the school day. Students may be excluded for longer periods if they repeatedly disrupt the learning of other students. Students who repeatedly violate school policies are a concern, and the frequency with which they violate school rules is often of equal or greater concern than individual violations. Because of this, discipline is based on the cumulative effects of these acts. Failure to comply with disciplinary action will result in imposition of further discipline.

While administrators normally apply the concept of progressive discipline in working with our students to bring about changes in inappropriate/unacceptable behavior, there may be situations where progressive discipline is not appropriate and prudent. In such cases, Lake Washington School District reserves the right to immediately suspend or expel where exceptional misconduct is involved (i.e., conduct that is so frequent in nature or as serious in nature in terms of the disruptive effect upon the operation of the school as to warrant an immediate suspension or expulsion). This may also apply to students who have committed serious violations or acts in the community and may pose a threat or disruption to other students at school. A suspension from school may be appealed. The student will be informed of the process at the time a suspension occurs. Parents will be notified of the suspension by mail.

Academic Honesty Policy

The integrity and success of the academic community is based in large part on a sense of trust between students and faculty. A violation of academic honesty destroys that trust and will not be tolerated at EHS. An academic honesty violation includes, but is not limited to, any of the following instances: reproducing another's work from a web-site, book, or article and representing that work as your own; using material in a paper or assignment from another source without crediting the source correctly; presenting an idea or product as new and original when it is derived from an existing source (Merriam Webster's Collegiate Dictionary, 10th Edition); misrepresenting the amount of work done on a project or paper as your own when another person actually did a majority of the work; submitting a paper or assignment done for one class in a different class without permission from the instructor; or misrepresenting music/video images in a student project. Furthermore, an academic honesty violation includes improperly sharing work between students. Unless specifically stated by the teacher, improper means that each student must turn in their own work that is produced independently despite the fact that underlying information may have been shared and/or obtained through collaborative efforts. Parents and students are asked to read through, discuss, and acknowledge with their signatures, the school's Academic Honesty Policy and related materials. Advisors will discuss this policy in their advisories both at the beginning of each new school year and whenever appropriate. If a student violates the academic honesty policy, regardless of intent, the sanctions will be:

First Offense: Zero points, no make-up, phone call or email to parent.

Second Offense (in the same class): Automatic withdrawal with a failing grade. Letter signed by teacher and administrator sent to parent.

Cafeteria Theft Policy

A student who takes or attempts to take food from the cafeteria without purchasing it is stealing. **Eating food in line and then not paying for it is also stealing!** The following consequences will apply to a student caught stealing in the cafeteria (1st offense):

- \$25 dollar fine *
- 5 hours of school service/parking lot cleanup
- An apology to kitchen staff
- Parent or Student/Resource Officer conference

On the 2nd offense, a student will receive a 5 day suspension and a police report will be filed. *If the student is not able to pay the fine the school service will be doubled to 10 hours.

Electronic Device Policy

Students are not to use cell phones or other personal electronic devices, such as MP3 players, while class is in session, unless given permission by the teacher.

Dance Guidelines

Students must wear shoes and shirts to all EHS dances. Entry will not be allowed 90 minutes after the start time of the dance. For example, there will be no admittance after 9:30 to a dance that starts at 8:00. No refunds will be awarded for dance tickets should students not arrive on time or if they have been removed from the dance. A student may bring a date from another school provided the guest is at least in 9th grade and shows valid school identification. Guests attending who are no longer in high school must be under the age of 21 and show valid identification. When dancing, the following guidelines must be followed: no mimicking/simulating sexual acts, no freak-dancing (freak-dancing is defined as two people facing the same direction with the first person bent over and the second person thrusting his/her pelvic area towards the first person), no hands under clothing, clothing stays on/no rubbing groin or breast areas (areas normally covered by swim attire) with hands, stay vertical (no laying on the floor), keep both feet close to the floor, and no leaning against walls, pillars, or stationary objects. A student who is absent or suspended from school on the day of a school event may not participate in the dance.

Dress and Personal Hygiene

Students are expected to dress in a fashion conducive to a positive learning environment and to meet health and safety standards. At no time are bare feet permissible in the building. Dresses, shorts, and skirts must be of reasonable length, as determined by fabric matching or being longer than finger-tip length when arms are extended downward and palms are touching the legs. Full-length shirts must be worn with no visible midriff, and underwear should not be showing; low-cut, backless, strapless clothing is considered disruptive to the educational process and will not be allowed. Students who participate in sports or activities must conform to the dress code while classes are in session.

Additionally, clothing and hats advertising drugs, alcohol, or tobacco products with words or pictures will not be worn by students and pictures, symbols, or words of a violent, lewd, or sexually provocative nature will not be worn by students or be

displayed on their possessions (notebooks, backpacks, etc.). Also, any clothing, symbol, or action which promotes inappropriate, illegal, gang related activity or otherwise creates a climate of harassment or intimidation is forbidden at Eastlake High School. Consequences:

- 1st offense – warning by staff member and administrator notification.
- 2nd offense – administrator conference and parent contact.
- 3rd offense – school service of 3-5 hours to be served within two weeks.

* Any Activity or Athletic uniform worn during regular school hours must comply with the established EHS dress code.

Human Dignity

Recognizing and valuing that we are a diverse community, it is part of our mission to provide a positive, harmonious environment where diversity is respected and encouraged.

A major aim of education in the Lake Washington School District is the development of a commitment to the core values of a democratic society. In accordance with that aim, the district strongly emphasizes a core value of mutual human respect for each person regardless of individual differences and /or characteristics including for example, but not necessarily limited to race, gender, age, disability, physical condition, sexual orientation, ethnic group or religion. We expect this value to be manifested in the daily behaviors of student, staff and volunteers.

Harassment

Because all employees and students have the right to work and learn in a non-intimidating environment, harassment will not be condoned or tolerated in the district. Harassment of any employee or student on the basis of individual differences including but not limited to gender, religion, race, age, ethnic group, disability, physical condition, sexual orientation, or marital status is a serious violation of district and school policy.

Harassment can take many forms and can include bullying, slurs, comments, rumors, “put-downs”, jokes, innuendoes, unwelcome compliments, cartoons, pranks, and/or other verbal or physical conduct relating to an individual which (1) have the purpose or effect of creating and intimidating, hostile or offensive working or learning environment; (2) have the purpose or effect of unreasonably interfering with an individual’s work performance or education(3) have the purpose of effect of unreasonably interfering with an individual’s work performance or education; or (4) otherwise unreasonably affects an individual’s employment or education opportunities.

Sexual Harassment is a type of harassment that occurs when the types of verbal and physical conduct described above are sexual in nature. Conduct is gender-based when it would not occur but for the sex of the person to whom it is directed. Sexual harassment is defined as verbal, visual, or physical advances made within the work and school setting and unwelcome by the person. Sexual harassment exists when: (1) submission to the conduct is, either explicitly or implicitly, a term or condition of employment or education; or (2) submission to or rejection of the conduct is used as the basis of an employment or school-related decision affecting such individual; or (3) the conduct unreasonably interferes with the individual’s job or educational performance or creates an environment that is intimidating, hostile or offensive.

Harassing conduct includes repeated offensive sexual flirtations, advances or propositions, continued or repeated verbal abuse of a sexual nature, graphic or degrading verbal comments about and individual or about his/her appearance, the display of sexually suggestive objects or pictures, or any offensive or abusive physical contact. Harassment, including sexual harassment, does not refer to casual conversations or compliments of a socially acceptable nature. It refers to behavior related to the above definitions which is not welcome, is personally offensive and which interferes with efficacy or creates uneasiness.

False reports It is a violation of this policy to knowingly report false allegations of harassment. Persons found to knowingly report false allegations would be subject appropriate discipline.

Investigative process Any complaint received will be promptly investigated and the district will take prompt corrective action where appropriate. A written report of the complaint and investigation results will be compiled. Results of the investigation will be communicated in writing to the complainant and the accused within thirty days. Appropriate corrective measures will be taken no more than thirty days from the written response. This policy and related procedures and administrative guidelines will be posted and disseminated in each work site and reviewed with employees and students on an annual basis.

Alcohol, Drug and Tobacco-Free School

According to the Drug-Free Schools and Communities Act, schools must be totally free of unlawful drugs or alcohol. No one is allowed to possess, use, solicit, or distribute tobacco, drugs, or alcohol while at school or while taking part in any school activities.

Dangerous Weapons

Possessing, using, transferring, or transporting any object that could reasonably be considered a firearm or dangerous weapon or possessing any exploding item, device or substance that would be capable of producing bodily harm or cause damage to property or disruption of the educational process is strictly prohibited. Violation of this rule is considered serious to the safety and welfare of both the student who violates it and others in the District and such a disruption to the educational process, that emergency expulsion will always be immediately enacted. By law, we are required to notify the local law enforcement agency of a violation of this rule. Also by law, in the case of possession of a firearm, we are required to expel the student. The duration of the expulsion will be at least one school year and may be permanent.

Student Searches

Administrators may make general searches of all student lockers, desks, storage areas, or automobiles parked on campus without prior notice given to students. An individual student, his/her property, and automobiles parked on campus' may be searched by school district employees if the search is reasonably related to the discovery of contraband or other evidence of a student's violation of the law or school rules.

Illegal items or other possessions reasonably determined to be a threat to the safety or security of others shall be seized by school authorities. Items which are used to disrupt or interfere with the educational process may be temporarily removed from students' possession.

Drug-Scenting Dogs

The purpose behind inspections by dogs is to discourage students from bringing, keeping, and/or using drugs on school grounds. RCW 28A.600.210 states: “The legislature finds that illegal drug activity and weapons in schools threaten the safety and welfare of our school children and pose a severe threat to the state educational system. School officials need to protect students from exposure to illegal drugs, weapons, and contraband. Searches of school-issued lockers and the contents of those lockers is a reasonable and necessary tool to protect the interests of the students of the state as a whole.” With this purpose in mind, administration has the authority to invite drug-scenting dogs to conduct suspicionless searches on school property.

Exceptional/Serious Misconduct and Discipline

Any conduct, which materially and substantially interferes with the educational process, is prohibited. However, the following infractions have been judged so serious in nature and / or so serious in terms of disruptive effect upon the operation of the school that students may be subject to an emergency expulsion and /or suspension (short term or long term) for a first time offense. Because each situation is handled individually, administrators have the discretion to use other alternative forms of discipline if they so decide. This may include restitution for property damage or loss, and /or restitution to victims if appropriate. All of the behaviors listed below in the summary chart are specifically prohibited on or adjacent to school grounds, on school-sponsored transportation (including authorized school bus stops), at school events off school grounds, or off-campus if disruptive effects result at school. Law enforcement may be informed.

Eastlake High School Athletic/Activities Policies – Hazing Rituals

Hazing will not be tolerated in any form and is never to be part of our program. Acts of hazing can escalate to the point that the students participating are at risk. It is also quite possible that many acts of hazing will result in legal action being taken against the coach, advisor, student group leader, administration or the school district.

Any student who participates willingly in a hazing ritual is subject to disciplinary action, including suspension from school or the team or both, and possible legal action dependent on the severity of the incident.

Any student-athlete who observes and does not attempt to stop or report such a violation can also be subject to disciplinary action by our school. Repeated acts of hazing can result in further school action and permanent suspension from athletics.

Examples of Acts That Are Considered Hazing Rituals and questions to ask yourself (Am I hazing?)

Questions for team leaders to reflect on:

- Have all the participants, their parents and the coach been notified prior to the event? *Generally hazing is a surprise.*

- Would you be comfortable telling your coach, parents, and school administration about the plans prior to the event? *If you are not willing to share, you are treading into dangerous territory.*
- Does the entirety of the team / participate equally, or are new members singled out? *If new members are singled out fro demeaning treatment, they are being hazed.*
- Do juniors and seniors do anything that is unpleasant, or weird to freshman/sophomores? *If the answer is yes, the new members of the team are being hazed.*
- Are any group members violating the law or breaking school district policy? *If the answer is yes STOP the activity.*

Examples of hazing (this is not an all inclusive list):

- Assigning pranks such as stealing, painting, breaking the law or harassment of other groups.
- Modifying one's appearance with unusual haircuts, shaving, unusual clothing, tattoos or skin markings.
- Forcing public acts of general buffoonery.
- Smearing unusual or disgusting substances on the skin.
- Consumption or the threat of consumption of undesirable foods and/or liquid.
- Apparel that is embarrassing, lewd or interferes with the education atmosphere.
- Playing games where the loser must perform embarrassing acts.
- Agreeing to do demeaning tasks for others (servitude).
- Spanking, swatting or hitting with great force.
- Throwing in the shower, dousing, powdering or dumping in the toilet or urinal.
- Sitting or standing in uncomfortable positions.
- Pushing, showing or tackling team members under orders from others.
- Any test of emotional stability.
- Spreading false rumors.
- Any process that unnecessarily produces mental anguish.

Initiation ceremonies and rituals are different from hazing rituals in that they are positive open and public events. Initiation ceremonies welcome new members to a team or group, promote bonding and orientation to the purpose, culture, and expectations of the team, club, or group. The coach, advisor and parents are informed of the ceremony and are invited to participate.

Alcohol, Drug and Tobacco-Free School

According to the Drug-Free Schools and Communities Act, schools must be totally free of unlawful drugs or alcohol. No one is allowed to possess, use, solicit, or distribute tobacco, drugs, or alcohol while at school or while taking part in any school activities.

Use or Possession of Illegal Substance and /or Paraphernalia

1st offense – The student will have a conference with parents and a building administrator. An administrator will notify the appropriate law enforcement

agencies. Substance will be confiscated. The student will receive an emergency expulsion or a 45 day long-term suspension and loss of off campus privileges. Coming to a school-related activity having used an illegal substance will result in the student being banned from any school-related activities during the season. The student will be referred for an assessment by the Chemical Dependency Counselor (CDC); the school will ask the student to sign the appropriate releases of information to allow conversation between agency personnel, school personnel, and the student's parents/guardians.

The student suspension will be reduced to 10 days if the student:

- Completes an assessment with a CDC
- Submits the results/recommendations to the student's counselor and administrator
- The student and parent/guardian agree to follow the recommendations of the assessment.

Failure to comply with CDC recommendations will result in the reinstatement of the full suspension.

2nd offense – The student will have a conference with parents and a building administrator. An administrator will notify the appropriate law enforcement agencies. The substance will be confiscated and the student will receive an emergency expulsion and/or long-term suspension.

Note: On the first offense, any student caught selling, distributing, or giving any illegal substance to another person will be cause for law enforcement intervention and emergency expulsion.

The Lake Washington School District also prohibits the use or possession of tobacco products on school property and at school sponsored functions. Use or Possession of tobacco on school property or during school-sponsored activities will result in the following consequences:

1st Offense: Short-term Suspension (1-3 days) reduced with completion of LWSD Tobacco Diversion Class.

2nd Offense: Short-term Suspension (3 days).

Student Searches

Administrators may make general searches of all student lockers, desks, storage areas, or automobiles parked on campus without prior notice given to students. An individual student, his/her property, and automobiles parked on campus' may be searched by school district employees if the search is reasonably related to the discovery of contraband or other evidence of a student's violation of the law or school rules.

Illegal items or other possessions reasonably determined to be a threat to the safety or security of others shall be seized by school authorities. Items which are used to disrupt or interfere with the educational process may be temporarily removed from students' possession.

Zero Tolerance Policy

Eastlake High School has no tolerance for *any* act of violence. Fighting or physical assault of any kind is prohibited at school and school events. A student involved in such action shall be suspended from school. Any student promoting a fight, encouraging others to fight, and/or threatening physical assault is subject to suspension. The use of abusive language, especially when used to escalate or inflame a situation, is considered verbal assault. In the event of a fight, all students must immediately disperse when ordered to do so by a staff member; students who fail to immediately leave the scene are subject to suspension.

Included in the Zero Tolerance Policy are acts which occur while involved in activities of group affiliation that have the effect of causing intimidation, harassment, physical harm to students or staff, disruption to the educational process, or that cause damage to school property.

Dangerous Weapons

Possessing, using, transferring, or transporting any object that could reasonably be considered a firearm or dangerous weapon or possessing any exploding item, device or substance that would be capable of producing bodily harm or cause damage to property or disruption of the educational process is strictly prohibited. Violation of this rule is considered serious to the safety and welfare of both the student who violates it and others in the District and such a disruption to the educational process, that emergency expulsion will always be immediately enacted. By law, we are required to notify the local law enforcement agency of a violation of this rule. Also by law, in the case of possession of a firearm, we are required to expel the student. The duration of the expulsion will be at least one school year and may be permanent.

Violation	Definition	Consequence
Arson	Lighting a fire, causing any fire to be started, setting fire to school property or falsely setting off a fire alarm.	1st Offense <ul style="list-style-type: none"> • EE/LTS, Police Report
Assault (Resulting in Bodily Harm)	Inflicting physical harm.	1st Offense <ul style="list-style-type: none"> • EE/LTS, Police Report
Disruptive Behavior	Behavior that materially or substantially interferes with or is detrimental to the orderly operation of school, school sponsored events or any other aspect of the educational process. Behavior or activities occurring off-campus that cause or threaten to cause a substantial disruption to the educational process on campus or impinge on the rights of the students or staff at school may be subject to discipline.	1st Offense: <ul style="list-style-type: none"> • EE/ STS/LT 2nd Offense: <ul style="list-style-type: none"> • EE/STS/LTS
Drugs/Alcohol Possession Use Paraphernalia	Possession, use, or being under the influence of drugs/alcohol on school grounds or during school sponsored events; including inhalants, prescription drugs beyond a daily dose and over the counter drugs in quantities or mixtures that are suspect and capable of causing serious harm, or any substance represented as such. Paraphernalia or any item that can be used to ingest or conceal drugs or alcohol.	1st Offense: <ul style="list-style-type: none"> • EE/LTS and Assessment/ST S option • Police Report 2nd Offense: <ul style="list-style-type: none"> • EE/LTS • Police Report
Drugs/Alcohol Sell Buy Transfer	Transfer, sale, or solicitation on school grounds or during school sponsored events. Includes illegal drugs, inhalants, controlled substances, and combinations or amounts of over-the-counter drugs that could be seriously harmful, or any substance represented as such.	1st Offense: <ul style="list-style-type: none"> • EE/LTS • Police Report

Firearms	Possession, threat to use or use of a firearm.	1st Offense: <ul style="list-style-type: none"> • EE/E • Permanent expulsion from the LWSD • ROA (referral to an outside agency) • Conference • Police Report
Harassment, Intimidation, Bullying, Disrespect	Harassment (verbal, physical, visual) /Intimidation/Bullying/Disrespect: Derogatory remarks, phrases, gestures, teasing etc., which demeans the race, ethnic background, gender or individuality (e.g. character, sexual orientation, physical appearance) of a person, or inappropriate touching. Also: words, actions, or electronic communications that create a hostile environment or disrupt school operations.	1st Offense: <ul style="list-style-type: none"> • Conflict Mediation and/or STS, LTS, EE 2nd Offense: <ul style="list-style-type: none"> • EE/STS/LTS 3rd Offense: <ul style="list-style-type: none"> • EE/STS/LTS

Violation	Definition	Consequence
Other Weapons, Explosives and Dangerous Items	Possession, threat to use or use of other dangerous weapons (or replica weapons) i.e. knives, BB guns, paintball guns, martial arts weapons, explosives, incapacitating agents, laser devices or any other item or substance which can inflict or threaten substantial harm or which can be perceived by others as a weapon. Lighters, matches, incendiary or shock-producing devices.	1st Offense: <ul style="list-style-type: none"> • EE/STS/LTS • ROA (referral to an outside agency) • Conference • Police • Contact/Report 2nd Offense: <ul style="list-style-type: none"> • EE/LTS • ROA (referral to an outside agency) • Conference • Police • Contact/Report
Sexual Harassment	Unwelcome sexual comments, jokes, innuendoes, compliments, cartoons, pranks and/or other verbal, visual or physical advances, unwanted touching, stalking, or gestures specific to an individual's gender.	1st Offense: <ul style="list-style-type: none"> • Conflict Mediation and/or EE/STS/LTS 2nd Offense: <ul style="list-style-type: none"> • EE/STS/LTS

		3rd Offense: <ul style="list-style-type: none"> • STS/LTS/EE
Threats	To express an intent to inflict injury or cause harm, to intimidate verbally, by use of hand signs, in writing or on a computer or other electronic device. Words or actions intended to inflict mental or physical harm are not allowed.	1st Offense: <ul style="list-style-type: none"> • STS/LTS/and/or EE 2nd Offense: <ul style="list-style-type: none"> • LTS and EE

Other Forms of Misconduct and Discipline

Violation	Definition	Consequence
Academic Dishonesty	Any student who knowingly submits work of others represented as his/her own shall be considered to have engaged in academic dishonesty. Academic dishonesty also includes the aiding and abetting of academic dishonesty of others, and/or the unauthorized use of electronic devices.	1st Offense <ul style="list-style-type: none"> • Loss of credit • Parent contact 2nd Offense <ul style="list-style-type: none"> • Loss of credit for semester • STS/LTS
Alteration of Records	A student who falsifies, alters, destroys a school record or any communication between home and school shall be subject to corrective action.	1st Offense <ul style="list-style-type: none"> • EE/STS/LTS • Parent Contact • Police Contact
Assault	A student shall not perform physical, written or verbal violence toward another person causing fear or harm.	1st Offense <ul style="list-style-type: none"> • EE/STS/LTS, Police Contact/Report 2nd Offense <ul style="list-style-type: none"> • EE/LTS, Police Report/Report
Dress Code	Student dress shall be conducive to the educational environment. A health or safety hazard shall not be presented by the student's dress or appearance; damage to school property shall not result from the student's dress; the student's dress or appearance shall not create material and substantial disruption	1st Offense: <ul style="list-style-type: none"> • Change clothes • Parent contact • EE/STS/LTS 2nd Offense:

	of the educational process at the school. Student dress shall not be gang-related, nor may it promote illegal activity or activity that violates school regulations.	<ul style="list-style-type: none"> • EE/STS/LTS
Endangerment of Others	A student shall not act in a manner that endangers student, staff, or community members. This includes reckless driving or speeding.	1st Offense: <ul style="list-style-type: none"> • EE/STS/LTS 2nd Offense: <ul style="list-style-type: none"> • EE/STS/LTS • Police Contact/ Report
Extortion/Blackmail & Coercion	A student shall not extort or attempt to extort any item, information or money.	1st Offense: <ul style="list-style-type: none"> • EE/STS/LTS 2nd Offense: <ul style="list-style-type: none"> • EE/LTS
Fighting	A student shall not engage in physical altercation with one or more other persons. This includes instigating a fight or contributing to the likelihood of a fight developing.	1st Offense: <ul style="list-style-type: none"> • EE/STS/LTS 2nd Offense: <ul style="list-style-type: none"> • EE/LTS
Forgery	A student shall not engage in copying, plagiarizing, falsifying materials/signatures and/or other information or objects.	1st Offense: <ul style="list-style-type: none"> • Parent contact • EE/STS/LTS 2nd Offense: <ul style="list-style-type: none"> • EE/STS/LTS
Violation	Definition	Consequence
Gang Related Behavior/Actions	Committing a school infraction or criminal act as a group of three or more persons or displaying signals, signs, symbols, or wearing clothing that is associated with gang activities	1st Offense: <ul style="list-style-type: none"> • STS/LTS • Police Contact/ Report 2nd Offense: <ul style="list-style-type: none"> • STS/LTS • Police Contact/ Report 3rd Offense: <ul style="list-style-type: none"> • LTS/E • Police/ Contact/ Report

Gambling	A student shall not engage in acts which involve the exchange of money or other items through games of chance or encouraging other students to gamble	1st Offense: <ul style="list-style-type: none"> • EE/STS/Community Service 2nd Offense: <ul style="list-style-type: none"> • EE/LTS
Hazing	A student shall not participate in or fail to report known activity that demeans, abuses, or violates members or potential members of a team or club individuals.	1st Offense: <ul style="list-style-type: none"> • EE/STS/LTS 2nd Offense: <ul style="list-style-type: none"> • EE/STS/LTS
Illegal Acts	A student shall not engage in the commission of any illegal or criminal act. This includes the possession or distribution of illegal or inappropriate materials or images, including sexual images on cell phones or other electronic devices.	1st Offense: <ul style="list-style-type: none"> • Mediation and/or STS, LTS, EE • Police Report
Immediate Danger and Disruption	If a student's presence poses an immediate and continuing danger to the student, other students, school personnel, or an immediate and continuing threat of substantial disruption to the educational process, that presence is not permitted.	1st Offense: <ul style="list-style-type: none"> • E/.STS/LTS/or E according to circumstances • Conference • Police Contact 2nd Offense: <ul style="list-style-type: none"> • EE/LTS/or E according to circumstances • Conference • Police Contact
Interfering with School Investigation	Misrepresenting, falsely accusing, concealing evidence, verbally or physically impeding or interrupting an investigatory process involving self or others, or otherwise hindering an investigation of an infraction or crime on campus or at a school sponsored event.	1st Offense: <ul style="list-style-type: none"> • EE/STS/LTS
Multiple/Accumulated Offenses	A student may be disciplined for the commission of multiple or accumulated offenses.	1st Offense: <ul style="list-style-type: none"> • STS/LTS

Violation	Definition	Consequence
Negative Community Action	Washington State Law provides for the implementation of school discipline for actions performed outside of school that may adversely affect the educational environment of the school. Examples include, but are not limited to, acts of vandalism, theft, assault, and harassment occurring off-campus.	<p>1st Offense:</p> <ul style="list-style-type: none"> • STS/LTS/E according to circumstances <p>2nd Offense:</p> <ul style="list-style-type: none"> • STS/LTS/E according to circumstances <p>3rd Offense:</p> <ul style="list-style-type: none"> • STS/LTS/E according to circumstances
Theft	A student shall not steal, be involved in stealing, possess without permission, and/or sell with knowledge of or reason to know stolen property. Restitution may be required.	<p>1st Offense:</p> <ul style="list-style-type: none"> • EE/STS/LTS • Restitution • Police Contact/Report <p>2nd Offense:</p> <ul style="list-style-type: none"> • EE/LTS • Restitution • Police Contact/Report
Tobacco	A student shall not possess, use, or distribute any tobacco product.	<p>1st Offense</p> <ul style="list-style-type: none"> • STS • Diversion <p>2nd Offense</p> <ul style="list-style-type: none"> • STS
Trespass/Loitering/ Unauthorized Entrance	A student shall not enter or be present on school property without permission.	<p>1st Offense:</p> <ul style="list-style-type: none"> • EE/STS/LTS <p>2nd Offense:</p> <ul style="list-style-type: none"> • EE/LTS
Unauthorized Use of Equipment	Computers, science equipment, and laser pens, cell phones and other personal technology devices may not be used in classrooms without teacher authorization. Photographs, video and audiotapes may not be published	<p>1st Offense:</p> <ul style="list-style-type: none"> • STS /LTS • Restriction of tech privileges <p>2nd Offense:</p>

	without permission. Inappropriate materials or websites may not be accessed or displayed.	<ul style="list-style-type: none"> • STS/LTS • Restriction of tech privileges, confiscation <p>3rd Offense:</p> <ul style="list-style-type: none"> • EE/STS/LTS
--	---	--

Violation	Definition	Consequence
Vandalism	Destruction or defacing of school or personal property is not allowed. This includes tampering with equipment or supplies, littering, or displacing property.	<p>1st Offense:</p> <ul style="list-style-type: none"> • STS/LTS • Restitution/CS • Police intervention • Possible E <p>2nd Offense:</p> <ul style="list-style-type: none"> • LTS • Restitution/CS • Police intervention • Possible E <p>3rd Offense:</p> <ul style="list-style-type: none"> • LTS/E according to circumstances • Restitution/CS • Police Intervention • Possible E
Vulgar or Lewd Conduct	Any lewd, indecent, vulgar, profane or obscene act or expression is prohibited. This includes swearing, spitting, obscene gestures and <u>drawings including electronic communication.</u>	<p>1st Offense</p> <ul style="list-style-type: none"> • EE/STS/LTS <p>2nd Offense</p> <ul style="list-style-type: none"> • EE/LTS
Willful Disobedience	Failure to follow reasonable requests and directions of school staff.	<p>1st Offense</p> <ul style="list-style-type: none"> • STS <p>2nd Offense</p> <ul style="list-style-type: none"> • LTS

Computer and Internet Code of Conduct

The Lake Washington School District provides a wide range of computer resources to its students and staff for the purpose of advancing the educational mission of the District. As users of District computers, students are expected to review and understand Appropriate Use Procedures.

1. Protect your logon information from others. Do not use others' passwords.
2. Exercise good judgment when using computer and electronic equipment. Do not provide personal information to strangers.
3. Respect district property and be responsible in the use of the equipment. Do not destroy, modify or abuse the hardware or software in any way.
4. Do not delete or add software or peripheral equipment to district computers without permission.
5. Do not use district computers for illegal, harassing, vandalizing, inappropriate or indecent purposes.
6. Do not use the Internet to access or process pornographic or otherwise inappropriate material.
7. Be ethical and courteous to other students, staff and community members. Do not send hate, harassing or obscene mail, text or images, libelous, scandalous or discriminatory remarks, or demonstrate other antisocial behaviors. Such communication may be subject to school discipline legal action; and/or police contact.
8. District computers may not be used to interfere or disrupt other users, services or equipment, including distribution of unsolicited advertising (spam), propagation of viruses and distribution of large quantities of information (chain letters, network games, photograph files or broadcasting messages).
9. Do not assume that because something is on the Internet that you can copy it; do not plagiarize by submitting others' work.
10. Do not use district computers for commercial or political activity.
11. Do not attempt or construct methods to bypass district filters.

Technology Code of Conduct

1. Students are expected to follow the *Internet Code of Conduct* and the *Computer User Agreement and Release Form*.
2. Library and mini lab computers will be used for school use only.*
3. Students are expected to leave games and other applications at home.*
4. Mini lab will only be used when staff member is present.*
5. Students will leave food and beverages outside the computer lab at all times.
6. Students will clean up computer desktop (close all windows) upon leaving.*
7. Monitor positions are not to be changed.*
8. Students will not close screens, clear desktops, or turn off computers when teachers approach them.*
9. Students will not disturb other computer users.*
10. Students will not remove applications from the Hard Drive.**
11. Students will not install or download any personal software, peripheral, or hardware.***
12. Students will not vandalize or steal school equipment.***
13. Students will not alter internal components of the computers.***

- * Warning – may be asked to leave lab for remainder of day
- ** Removal from lab and loss of computer privileges for one week
- *** Removal from computers for one month and parent conference
- ****Removal from computers for remainder of the year and parent conference

Offenses are cumulative for the school year. Consequences are guidelines. Teacher, staff and administrators will use discretion to ultimately determine the consequences.

Guidelines for Personal Student Web Sites Housed on Private Servers

Students are encouraged to be involved in creating and maintaining their school's official website. The district has established the following guidelines for students who choose to create personal websites on private servers.

1. Students must have a thorough understanding of the rules, terms and conditions established by the host provider especially as it relates to content and language. If these conditions are not posted on the host site, an email should be sent requesting them.
2. These sites need to be closely monitored by the site initiator and /or manager (webmaster) to ensure that everyone contributing to the site follows the rules, terms, and conditions established by the Internet Service Provider.
3. School names, mascots, colors, and the school or school district's website designs are legal trademarks of the school and district and cannot be used without express permission.
4. These websites need to be clearly identified as personal websites that are not associated with Lake Washington School District or an individual school.
5. If material posted to a website is illegal, obscene, defamatory, threatening, disruptive, or harassing to other student or staff and/or the educational process, the District may contact the Internet Service Provider and website initiator/manager (webmaster) to ensure appropriate and legal expression. Legal and /or disciplinary action may also be taken by the District in appropriate case to prevent further abuses. Student webmasters or contributors may be disciplined by school authorities for authorizing such material either themselves or jointly with others, for aiding and abetting others to publish such material, or by knowingly permitting such material to be posted or to remain posted on the website without taking timely and adequate steps to prevent or remove the material.

Appropriate consequences for violating this policy are specified in this student code of conduct.

Health Room/Medication

District nurses are assigned to multiple schools and are not assigned to the campus. If a student feels ill during the school day, the teacher may give permission for the student to go to the office to call a parent to arrange for transportation home. Parents should inform the school on the student emergency contact card or in writing if a student has a life threatening illness, infectious disease, or serious allergy.

The Lake Washington School district's medication policy states that the only medication to be given at school must be doctor prescribed and needed in the event of a life-threatening situation. Students may not medicate themselves. If your child is currently taking daily medication, please arrange to have your child take it before school begins. Should medication need to be administered at school, parents must have their child's physician sign the LWSD medication form (#4023); provide a separate prescription pharmacy bottle labeled by the pharmacist (handwritten labels will not be accepted); bring the pharmacy bottle with the exact amount of medication needed for the designated time period (no more than one month at a time) to school at least two days prior to administration; and must pick up any unused medication (i.e. Epi-Pens, inhalers, etc) by the last day of school.

Child Find

Child Find is a federal requirement for the purpose of locating, evaluating, and identifying student's age birth to 21 years with a suspected disability who reside within the boundaries of the Lake Washington School district and are currently not receiving special education services. Child Find services are conducted throughout the year in the Lake Washington School District through the guidance team process. If you or your parents have concerns about your language/communication skills, motor skills, intellectual, social, emotional, and/or physical skills, please contact the school and ask for the special education teacher, school psychologist or other guidance team member. You may also call the Special Services main office at 425-702-3201 or district Child Find office at 425-836-6690 to request Child Find information.

Family Rights and Privacy Act

The Lake Washington School district is required to protect families from unauthorized release of certain information about its students. However, directory information may be release without permission of parents unless parents register their objection prior to October 1.

Directory information is routinely used by the school district in news releases, school event programs, and student directories. Such information is also released for the purposes of providing educational, scholarship, vocational/occupational, and/or military information (or to the new media or law enforcement). This information will not be released for commercial purposes.

Enrollment/Variiances

Students in Washington State may apply for an enrollment variance to attend a school in a different school district (out of district variance) or to another school in the Lake Washington School District (In-district variance).

Variations are accepted in a space available basis. Refer to the school district website, www.lwsd.org/parents/studentregistration for timelines and processes.

Closed Campus

Because we are concerned about safety, students are required to remain on the school grounds from the time of arrival until the end of the school day unless officially excused. Only in exceptional cases (with parent's request) will permission be granted from the attendance office or from a building administrator for a student to leave school. The woods and parking lot are off-limits to students during the school day, unless they have an off-campus pass and are leaving campus only during

lunch time. Other school campuses are off-limits during the school day to visitors from EHS, except with special permission of the visiting school's administrator. This includes other high school, junior high, and elementary schools.

The Discipline Board

Students will have the right to request an appeal hearing in front of the Discipline Board to appeal minor discipline infractions. A staff member may also refer cases to the Board. The board will meet as needed to hear cases. The board will be composed of 4 students, 2 faculty, 2 parents and 1 administrator. A student may choose to have a maximum of 2 people excused from the board if they feel the people may be biased. Students must make an appointment to appear before the board for their case to be heard. The appointment must be made within a reasonable time period following the infraction. If the student fails to appear at the designated time, the consequences will be set based upon the other evidence that is presented.

Early Dismissal/Late Arrival

Only seniors who obtain administrative approval will be allowed late arrival or early dismissal privileges. Those students who have early dismissal or late arrival are only to be on campus 10 minutes preceding or following their classes. Exceptions are to be cleared in writing by an administrator. Students are not allowed to congregate in hallways to wait for their next class, but rather should study quietly in the commons. Students violating these expectations will have their early dismissal/late arrival privilege revoked. Furthermore, students must meet the necessary academic and attendance requirements in order to receive an Early Dismissal/Late Arrival.

Elevator

Any person with special needs will be granted the use of the elevator. See Mrs. Rowe in the administrative office for a key. Keys are expected to be returned promptly and lost keys are assessed a \$30 fine.

Health Room/Medication

The health room is located upstairs in the counseling area. A parent/guardian or emergency contact must give permission to the counseling secretary for an ill student to leave campus. Once that permission is given, the student must check out through the attendance office. District nurses are assigned to multiple schools and are not assigned to a specific campus. If a student feels ill during the school day, the teacher may give permission for the student to go to the office to call a parent to arrange for transportation home. Parents should inform the school on the student emergency contact card or in writing if a student has a life threatening illness, infectious disease, or serious allergy. The Lake Washington School district's medication policy states that the only medication to be given at school must be doctor prescribed and needed in the event of a life-threatening situation. Students may not medicate themselves. If a student is currently taking daily medication, parents need to arrange to have the student take it before school begins. Should medication need to be administered at school, parents must have their child's physician sign the LWSD medication form (#4023); provide a separate prescription pharmacy bottle labeled by the pharmacist (handwritten labels will not be accepted); bring the pharmacy bottle with the exact amount of medication needed for the designated time period (no more than one

month at a time) to school at least two days prior to administration; and must pick up any unused medication (i.e. Epi-Pens, inhalers, etc.) by the last day of school.

Late Starts (Weather Conditions)

Eastlake High School will follow standard district schedules on designated late start days. If a late start occurs on STP Thursday, classes will begin at 8:30 a.m. for a one hour delay and at 9:30 a.m. for a two hour delay. When students return to class after a school cancelation, they resume a regular scheduled day.

Lockers

All students have an opportunity to have a locker, but each locker will be used by only one person. Lockers are school district property and will be assigned randomly through Advisory. Only school-issued locks will be permitted on lockers; therefore, any unacceptable lock will be cut off the locker. The school administration must have access to ALL lockers in case they need to search them for the purpose of maintaining the integrity of the school environment to protect the safety of other students. In other words, if drugs, alcohol, or any other equally dangerous or violent item is suspected to be in a student's locker, the locker can and will be legally searched.

Money and Valuables

Do not bring large sums of money and/or valuables to school. The school district is not responsible for loss or theft. If a student must bring cash or valuables to school, he/she should check the items into the main office where they can be secured in a vault for the remainder of the school day. Classrooms, storage rooms, and locker rooms are not secure areas.

NSF Checks

A reasonable fee of \$10.00 shall be charged for all dishonored checks returned to the LWSD per RCW 62A.3-104.

Off-Campus Lunch Pass

Eastlake is a closed campus. Juniors and seniors who want to leave campus at lunch must maintain a 2.0 or higher grade point average (GPA) in their previous semester, or have special permission of an administrator to obtain an Off-campus Lunch pass. Sophomores are eligible for off-campus lunch passes after first semester providing they also maintain a 2.0 GPA, or have special permission of an administrator. To obtain an Off- Campus Lunch pass the student must:

- a. maintain a minimum of a 2.0 GPA
- b. obtain an off-campus pass contract from the administrative office
- c. complete the contract including parent signatures
- d. return the contract to the Bookkeepers Office.
- e. have ASB card stamped with an Off-Campus logo

The off-campus pass is valid only at lunch and the student must carry the pass with him/her when leaving campus, showing it upon request of a staff or community member. If the student forgets his/her pass, he/she will be denied the privilege of leaving. Any student accumulating two (2) or more tardies after lunch in any quarter will have their Off-Campus Lunch pass revoked by their 5th/6th period teacher for

the remainder of the quarter. Any disruption taking place off of the Eastlake campus will result in the loss of the off-campus pass for an indefinite period of time. Students are expected to check out with the Attendance Office if they need to leave campus for appointments or due to illness. Students may lose their off-campus privileges for unexcused absences.

Parking/Driving

Students driving motor vehicles to school are expected to park in designated student parking areas. **All students who park their vehicle(s) on EHS's Campus during normal school hours (7:00 a.m.-3:00 p.m.) must have a visible and valid 2010-2011 Student Parking Permit displayed on their vehicles.** Students sign a contract and are expected to abide by its expectations. **Cars are not to be entered or used in any way other than transportation to and from school without expressed permission from the principal or designee.** Students who park or drive in a manner which indicates a reckless disregard for the safety of others, self or property, will result in discipline consequences that may include: loss of driving privilege, parent contact, parking permit revoked, police notification, short-term suspension, long-term suspension or expulsion.

Parking citations will be issued for the following:

- Parking without a valid and visible parking permit
- Using someone's parking permit other than your own
- Improper parking of vehicle including not properly parking in stall (i.e., taking more than one place or blocking accessibility) and parking in restricted areas (i.e., fire lanes, bus lanes, handicap only parking, staff and visitor parking, and curbs)
- Moving violations, including speeding and reckless endangerment (i.e., transporting any person or persons in the bed of a truck, transporting passengers in a trunk, on top of, outside of, or underneath any vehicle, not wearing seatbelts at all times on campus while in a moving vehicle, and not yielding to all school buses, pedestrians, and bicycle riders.

Official school personnel have the responsibility and right to cite students for unsafe driving on campus and for neglecting to have a valid and visible parking permit. If you feel you have been cited unfairly, you have two weeks to make an appointment with the assistant principal to dispute the ticket. No consideration will be made for students who neglect to make an appointment after two weeks.

Visitors

Parent visitors are always welcome. Before visiting a classroom, however, a parent must contact the teacher and check in at the main office upon arrival on campus. Student visitors must be a guest of a current EHS student and obtain permission from Mr. Bede at least 24 hours prior to visiting Eastlake High School. All student visitors must also register in the main office upon arrival on campus. Students from schools in Western Washington are not permitted to visit Eastlake during the school day.

Athletic/Activity Information

Students are eligible for any athletic program as soon as they have:

- Purchased an ASB card and the LWSD sports participation fee;

- Obtained parental/guardian permission to participate;
- Obtained a physical clearance once each school year;
- Shown proof of insurance; school insurance is available in the office; and
- Passed all classes (minimum of four .5 credit hour classes) during the previous semester with a 2.0 minimum G.P.A.

Sports Participation Fee

Please see the athletic secretary for information regarding sports participation fees. Fees must be paid at the time of turnout. Parents of students who are unable to afford the fee should contact the coach or athletic director at their school.

Athletic/Activities Code of Conduct

As members of a high school team or WIAA sponsored activity that represents LWSD, students are expected to make a strong personal commitment to rules of training and conduct in order to maintain a strong healthy body and represent their school in an exemplary fashion. To that end, the following rules apply to all students participating in interscholastic athletic/activities or attending a team-related activity like out of season camps or tournaments. These rules apply at all time throughout the school year which is defined as beginning with fall tryouts to the last day of school and including any summer team related activities.

Training Rules/Illegal Controlled Substances & Alcohol

Legend drugs and controlled substances – Penalties for the possession, use, or sale of legend drugs (drugs obtained through prescription, RCW 69.41.020-050) and controlled substances (RCW 69.50) shall be as follows:

- 1st Violation – A participant in possession and/or use of a controlled substance, and/or “legend drugs” including anabolic steroids or alcoholic beverages shall be immediately ineligible for interscholastic competition in the current interscholastic sports program for the remainder of the season. This also includes attending and remaining at an event where consumption of any of the above mentioned substances by a minor(s) occurs. Ineligibility shall continue into the next sports season in which the participant wishes to participate. In order to be eligible to participate in the next interscholastic sports season, the student athlete shall meet with school authorities. The school principal shall have the final authority as to the student athlete’s participation in the interscholastic sports program.
- A participant who seeks and receives help for a problem with use of legend drugs (RCW 69.41.010 identified substances) or controlled substances and controlled substance analogs (RCW 69.50.101 identified substances) shall be given the opportunity for assistance through the school and/or community agencies. In no instance shall participation in a school and/or community approved assistance program excuse a student athlete from subsequent compliance with this regulation. However, successful utilization of such an opportunity or compliance with athletic code by the student athlete may allow him/her to have eligibility reinstated in the athletic program, after a minimum two week suspension from competition and pending a recommendation by the school eligibility authority. Athletes may attend practices with Principal/Athletic Director approval but may not attend contests during the suspension period.
- 2nd Violation – A participant who again violates any provision of RCW 69.41.020 through 69.41.050 or of RCW 69.50 shall be ineligible for

interscholastic competition for a period of one (1) calendar year from the date of the second violation.

- 3rd Violation – A participant who violates for the third time RCW 69.41.020-69.41050 shall be permanently ineligible for interscholastic competition.
- “Legend drugs” means any drugs which are required by state law or regulation of the state board of pharmacy to be dispensed on prescription only or are restricted to use by practitioners only.

Sale and/or Distribution

- Per Lake Washington School District policy, the sale and/or distribution of alcohol or prescription or non-prescription drugs will result in the student automatically being placed on Violation 2 of the Athletic/Activity Code.

Tobacco

(Cigarette, chew, etc)

- First Career Violation – The possession and/or use of tobacco products will result in 1) a minimum of one week suspension from competition and 2) attending a mandatory cessation class.
- Second Career Violation – The student shall be suspended for ten (10) weeks of competition. If there is not ten weeks left in the current season, the suspension will carry over to the next competitive season in which they are a returning athlete. In addition, an athlete must provide evidence of successfully completing a nicotine treatment program and proof that they have discontinued the use of tobacco products before an athlete can again represent LWSD in athletics.
- Third Career Violation – A student athlete who violates for a third time shall be permanently prohibited from participating in any WIAA member school athletic program or activity.

Conduct Rules

- Students who commit unlawful acts or engage in delinquent behavior may be subject to disciplinary action up to and including suspension from the team. All LWSD athletes are expected to adhere to all LWSD policies as explained in each school’s Student/Parent Handbook. In addition to these general rules, coaches may establish other team expectations specific to their program.
- Procedures – Implementation: Parents are encouraged to assume an active role in monitoring and enforcing the provisions of this code. Alleged violations of this code will be investigated by the coach and/or Athletic Director. Sanctions will be imposed if the evidence suggests the alleged violations did indeed occur. If a violation of one or more of these rules occurs at school or during a school event, school sanctions (including suspension from school) may also apply in addition to the provisions of this code. Any student who is disciplined for violating the rules established by this code is entitled, if he/she desires to appeal the decision to the school’s administration.

School and District Events

For high school athletic events, junior high students must be accompanied by an adult. Students must show picture identification for events. All school conduct

regulations remain in effect at school and district events, and apply to visitors at other schools. Students will be accountable at their home school for violations that occur at other district or league schools, or at school sponsored events.

Bus Conduct Policy

Lake Washington School District's school bus conduct policy and rules are in accordance with Washington State WAC's and RCW's, all of which will be enforced. These regulations are designed to assure every student safe transportation to and from school and school-sponsored activities. All school and district rules for student conduct apply at bus stops, on the bus, and on the way to and from school. Violations will be subject to school consequences, including detention, suspension and/or expulsion. The bus driver has authority and responsibility for the behavior of passengers using school district transportation. Teachers, coaches, other certified staff members, or chaperones assigned to accompany students on buses have primary responsibility for the behavior of students in charge. However, the bus driver shall have final authority and responsibility.

Sports by Season and Coaches

Fall – Begins Aug.	Winter – Begins Nov.	Spring – Begins Feb.
Cross Country <i>Troy Anderson</i>	Basketball (Boys) <i>Brian Dailey</i>	Baseball <i>Kevin Agnew</i>
Football <i>Gene Dales</i>	Basketball (Girls) <i>Sara Goldie</i>	Fastpitch <i>Al Leaverenz</i>
Golf (Boys) <i>Pat Bangasser</i>	Gymnastics <i>Beth Chapin</i>	Golf (Girls) <i>Pat Bangasser</i>
Soccer (Girls) <i>Chuck Kriebel</i>	Swimming (Boys) <i>Kate McCary/Andy Hay</i>	Soccer (Boys) <i>Adam Gervis</i>
Swimming (Girls) <i>Kate McCary/Andy Hay</i>	Wrestling <i>Matt Leonard</i>	Tennis (Girls) <i>Bud Peterson</i>
Tennis (Boys) <i>Bud Peterson</i>		Track <i>Steve Jones</i>
Volleyball <i>Janna Tonahill</i>		

Clubs, Societies, and Activities

Eastlake has a strong offering of co-curricular and after-school activities, many of which include service projects that benefit both students and the community. As students become involved, they will meet people and share experiences that will add tremendously to their high school years. **Students who participate in ASB funded clubs or organizations must purchase an Eastlake ASB card.**

ARK (Acts of Random Kindness)
 Art
 Band
 Broadcast Journalism
 Cheerleaders
 Choir
 Dance Team
 Debate
 DECA
 Drama
 Drumline
 Environmental
 Film
 French
 French Honor Society
 Gay Straight Alliance
 Harry Potter
 HS Against Cancer (Relay for Life)
 International

Jennifer Macchiarella
 Chamberlin/Hargrave
 Judi Rogers
 Kalle Andres
 Krista Bjorge
 Andre Spichak
 Corinne Immel
 Stephen Thornsberry
 Genevieve Menino
 Rachelle Horner
 Sara Norris
 Kristi Martinez
 Gary Hinman
 Karen Williams
 Karen Williams
 Bill Monahan
 David Hecht
 Bill Monahan
 Matt Austin

Invisible Child
Jazz Band
JOG (Jr. Orthopedic Guild)
Journalism
Key Club
Leadership
Link Crew
Mu Alpha Theta
National Honor Society
Orchestra
RAKE
REACH
Robotics
Science Honor Society
Spanish
Spanish Honor Society
SSAAF
Yearbook
Sr. Class Advisors
Jr. Class Advisors
Soph. Class Advisors

Rebecca Nelson
Judi Rogers
Bill Monahan
Darin Fisher
Krista Bjorge/TBD
Emily Borden
Macchiarella/Meilleur/McCary
Kyle Ostlie
TBD
Valerie Harris
Jennifer Macchiarella
Rae Ann Engdahl
Steve Evans
Brian Wikrent
Elise Meilleur
Alicia Egashira
Bill Monahan
Darin Fisher
Tyrell Hardtke, Kristi Martinez
Kalle Andres, John Norris
Holly Bahnsen, Rob Jones

2010-2011 ASB and Class Officers

ASB President
ASB Vice -President
Treasurer/Public Relations

Danielle Dales
Zac Vorhof
Sierra Nolan

Career Resource Center

The Career Resource Center is a unique and valuable area within the Eastlake High School Counseling Services Department. Open to all students and their parents, the Career Resource Center provides many resources to aid in the exploration of college and career alternatives.

Career Center Resources and Services

Washington Occupational Information System (WOIS) - www.wois.org

WOIS is a complete Web-based resource for occupations, educational training programs, and postsecondary schools (Washington and national). The program includes both Washington specific and national information about wages and outlook for occupations. Peterson's Student Edge Test Prep is also included - online courses and practice tests for PSAT, SAT, ACT, SAT Subject Tests, AP and ASVAB (Armed Services Vocational Aptitude Battery). There are links to a variety of parent resources and students may establish an electronic portfolio. Call the Career Center for the required site key to access this Web site.

Visits by College Representatives

College admission representatives visit Eastlake in the fall to make presentations to small groups – introduce their school and answer student's questions. The schedule for college visits to be posted on the EHS Web site.

Visits by Armed Services Personnel

Recruiters from all the services are available during their monthly visits or at student request. ROTC and service academy representatives visit in the spring and fall to assist students in applying for these programs.

Job Board

Part-time employment opportunities for students are listed on the job board.

Scholarship File

The scholarship file contains current application information for scholarships received in the Career Center. The Scholarship Bulletin, which is updated every 2-3 weeks, is available in the Career Center and on the EHS Web site.

Community Service File

This file contains descriptions of a variety of community service opportunities available to students, filed by areas of interest – contact information is included.

SAT and ACT

Registration packets for college admissions tests are available throughout the year.

Career Interest Assessment

Computer and paper career interest surveys are available for all students.

WaNIC and Tech Prep

Information and registration for professional/technical programs offered at other high schools. Earn community college credit for professional/technical classes.

What is WaNIC?

WaNIC, the Washington Network for Innovative Careers, is a regional skills center cooperative of seven school districts in Northeast Puget Sound. Member districts include Bellevue, Issaquah, Lake Washington, Mercer Island, Northshore, Riverview and Snoqualmie Valley.

WaNIC is established to provide advanced-level Career and Technical Education programs based on rigorous academic and industry standards preparing students for post-secondary education and successful entry into high-skill, high-demand careers and employment.

Who can participate? Programs are open to students in the seven member school districts. For questions about enrolling, please contact your Career Specialist.
Grade Level: In general, students should be enrolled in grades 11 or 12. Exceptions to this must be discussed with the student's counselor and the teacher of the class of interest. Distance Learning courses are available to students in grades 9-12.
Length: Classes are a year long unless otherwise noted.

Scheduling: Approved and arranged with your counselor and career specialist. Class and travel time must be considered.

Credits: Occupational education credits are earned based on class hours involved. Some classes offer equivalency credit (i.e., math, science). Many WaNIC classes are eligible for college credit through [Tech Prep](#). Check with your counselor or career specialist.

Costs: None (except as noted for lab fees)

Transportation: Students provide their own transportation

Availability: Classes operate on a space available basis.

Diversity: WaNIC provides a broad range of outstanding courses for all students which can expand options for the future. All classes encourage both male and female student to enroll.

Advanced Training, Employment Preparation and Experience in a Career Field: Available to students while still attending high school. Many classes offer advanced placement options at area community colleges and technical colleges.

Questions? www.wanic.org

Community Resources:

Sammamish Youth Board

Lynne Handlos

Alcohol and Drug Treatment

Alateen

Alcohol & Drug Help Line

Alcoholics Anonymous

Narcotics Anonymous

Eastside Mental Health

Friends of Youth

Youth Eastside Services

Crisis Lines

Teen Line

Teen Link

24 Hr. Crisis Line 206-461-3222

Rape Relief

Health Services

AIDS Hotline

24-hour Nurse

Poison Control

Grief/Bereavement

Homelessness

National Runaway Switchboard