

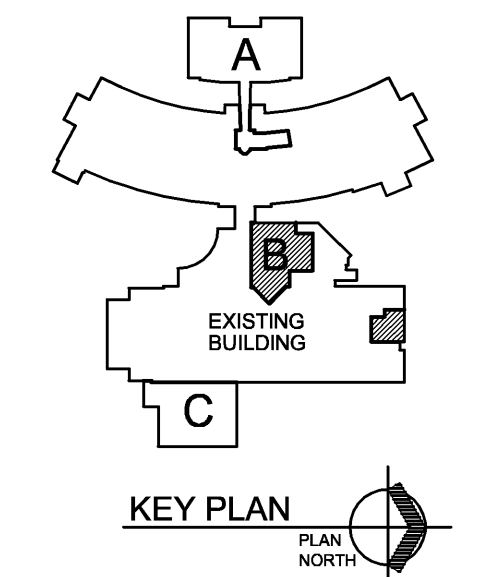
- EQUIPMENT GENERAL NOTES**
- (E) INDICATES SCHEDULED EDUCATIONAL CASEWORK. - SEE SHEET A1.38
  - (S) INDICATES SCHEDULED SCIENCE CASEWORK. - SEE PROJECT MANUAL
  - (A) INDICATES SCHEDULED ATHLETIC EQUIPMENT SCHEDULE. - SEE PROJECT MANUAL
  - (FD) INDICATES FLOOR DRAINS TO BE 1/2" BELOW FINISHED FLOOR. SLOPE FLOORS TO DRAINS. REFER TO PLUMBING DRAWINGS FOR LOCATIONS.
  - ALL COUNTERTOPS TO HAVE CONTINUOUS 4" HIGH BACKSPASHES AND ENDSPLASHES UNLESS NOTED OTHERWISE.
  - HIDDEN LINES (-----) INDICATE ITEMS TO BE PART OF LOOSE EQUIPMENT PACKAGE OR BY OWNER. NOT INCLUDED IN CONSTRUCTION CONTRACTS. DASHED LINES (- - - -) INDICATE OVERHEAD ITEMS (INCLUDED IN CONSTRUCTION CONTRACTS).
  - VIDEO FORMAT PROJECTION SCREENS (VFP) ARE TO BE WALL MOUNTED AND MANUAL UNLESS NOTED OTHERWISE.
  - (FEC) INDICATES FIRE EXTINGUISHER CABINET. REFER TO DETAIL 7-A1.37.
  - (FE) INDICATES WALL MOUNTED FIRE EXTINGUISHER.
  - (TB) INDICATES 4" HIGH TACK BOARD LENGTH AS INDICATED. REFER TO MOUNTING HEIGHT DRAWING.
  - (MB) INDICATES 4" HIGH MARKER BOARD LENGTH AS INDICATED. REFER TO MOUNTING HEIGHT DRAWING.
  - REFER TO A1.39 FOR MOUNTING HEIGHTS.
  - PROVIDE FILLER STRIPS BETWEEN CASEWORK UNITS AND WALL OR BETWEEN ANY UNIT AS REQUIRED. EXTEND COUNTER TO FACE OF WALL OR ADJACENT TALL CABINET.
  - ALL CASEWORK DOORS AND DRAWERS SHALL BE LOCKABLE (L.N.O.).
  - ALL EXPOSED ENDS AND BACKS OF CASEWORK SHALL BE FINISHED.
  - CASEWORK INSTALLER SHALL PROVIDE ALL OPENINGS (IN FIELD) AS REQUIRED FOR PLUMBING/ ELECTRICAL/ TECHNOLOGY, OUTLETS, ETC.
  - CASEWORK INSTALLER SHALL CAULK BETWEEN COUNTERS, BACKSPASHES, AND WALLS.
  - ALL WALL-MOUNTED CASEWORK SHALL BE MOUNTED WITH THE TOP AT 7'-0" AFF UNLESS OTHERWISE NOTED.
  - FOR TYPICAL COUNTERTOP, SEE DETAIL 1-A1.37. FOR TYPICAL COUNTERTOP AT KNEESPACE, SEE DETAIL 2-A1.37.
  - (\*) SHOWN INSIDE CABINETS INDICATES A TALL CABINET.
  - (CG) INDICATES CORNER GUARD. - SEE DETAIL 8-A1.37 AND PROJECT MANUAL.
  - (WG) INDICATES WALL CORNER GUARD. REFER TO PROJECT MANUAL.
  - (EWS) INDICATES EYE WASH / SHOWER UNIT.

- EQUIPMENT KEYNOTES**
- (ALL NOTES MAY NOT PERTAIN TO THIS SHEET)
1. LOOSE FURNITURE, BY OWNER. SHOWN ON PLANS FOR ELECTRICAL AND TECHNOLOGY CONNECTION COORDINATION.
  2. COPIER / PRINTER, BY OWNER.
  3. TACKLE WALL SURFACE, SEE DETAIL 10-A1.37 AND PLAN FOR EXTENTS.
  4. CASEWORK FILLERS, AS REQUIRED, EXTEND WORK SURFACE TO FACE OF WALL OR ADJACENT TALL CASEWORK.
  5. ACOUSTICAL WALL TREATMENT - REFER TO PROJECT MANUAL AND INTERIOR ELEVATIONS FOR ADDITIONAL INFORMATION.
  6. COMPUTER COUNTERTOP WITH WIRE MANAGEMENT - PROVIDE INTERMEDIATE SUPPORT AT 3'-0" O.C. - SEE DETAIL 15-A1.37.
  7. REMOVE, SALVAGE, AND REINSTALL EXISTING FEE TO ACCOMMODATE NEW CONSTRUCTION.
  8. OWNER FURNISHED AND CONTRACTOR INSTALLED PAPER TOWEL DISPENSER (TD).
  9. ALL COUNTERTOP SURFACES AND SINKS IN THIS ROOM SHALL BE EPOXY RESIN. EPOXY RESIN WINDOW SILLS SHALL BE PROVIDED IN THIS ROOM.
  10. PROVIDE A MOP HOLDER AT FLOOR SINK. NO LOCKS ARE REQUIRED ON CASEWORK IN THIS ROOM.
  11. DISPLAY CASE - REFER TO DETAIL 17-A1.37
  12. PROVIDE ROLLER WINDOW SHADES AT ALL EXTERIOR WINDOWS IN THIS ROOM.
  13. DOUBLE SIDED FUME HOOD.
  14. DISPLAY CASE - REFER TO DETAIL 18-A1.37
  15. REMOVE AND REINSTALL EXISTING COUNTERTOP TO ACCOMMODATE NEW CONSTRUCTION.
  16. REFRIGERATOR - BY OWNER.
  17. PROVIDE A 6" RADIUS AT EXPOSED CORNERS OF COUNTERTOP.
  18. PROVIDE A LIPPED SHELVES AT ALL CASEWORK IN THIS ROOM.
  19. PROVIDE LIGHT VALANCE UNDER WALL CABINETS BY THE CASEWORK MANUFACTURER.

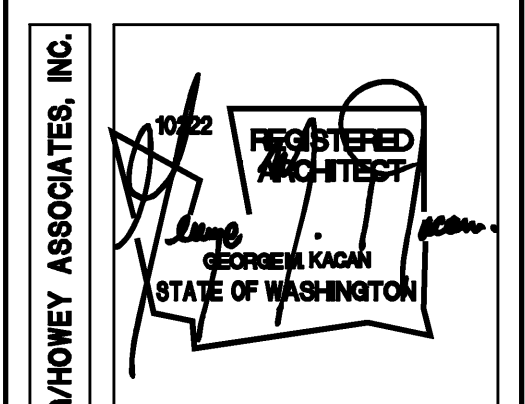
**VERIFICATION NOTE**

CONTRACTOR SHALL VERIFY ALL DIMENSIONS AND CLEARANCES AND ALL EXISTING FIELD CONDITIONS BEFORE STARTING CONSTRUCTION. COMMENCEMENT OF WORK CONSTITUTES ACCEPTANCE OF CONDITIONS.

SHOULD DIFFERENT CONDITIONS BE ENCOUNTERED, CONTACT THE ARCHITECT BEFORE PROCEEDING WITH WORK.



**1 UNIT B - SECOND FLOOR EQUIPMENT PLAN**  
SCALE: 1/8" = 1'-0"



**EASTLAKE HIGH SCHOOL**  
ADDITIONS AND RENOVATIONS  
BID SET  
Lake Washington School Dist. #414  
Sammamish, Washington

**Hutteball & Orenus**  
ARCHITECTURE  
4010 Lake Washington Blvd. NE, Suite 320  
Seattle, WA 98148  
P: 425.848.8848 F: 425.828.8067

**FANNING HOWEY**  
800.635.1911 www.fhai.com

UNIT B SECOND FLOOR EQUIPMENT PLAN	COMPL. NO. 210081.00	REVISIONS NO. DATE
DRAWN BY: JDR	DATE: 6/29/11	
CHECKED BY: MIS		
<b>A1.34</b>		
EASTLAKE HIGH SCHOOL 210081.00		