

# Accelerated Programs

Lake Washington School District

Dr. Cindy Lundvall, Director  
Board of Directors Work Session

March 2, 2008

# Accelerated Programs: LWSD

## Background

- Grades 1-6 Quest Program – Full-Time: 5 sites
  - Alcott (1990 formerly at Mead)
  - Franklin (1989 formerly at Twain and Kirk)
  - Redmond (moved from Einstein 2008)
  - Smith (2008)
  - Thoreau (2006)
- Grades 1-6 Enrichment Pull-Out Program: 3 sites
  - Mead, Sandburg, Rush
  - 1 day per week enrichment

# Junior High Program

- Junior High Quest: 2 sites
  - Redmond Junior High (1988) Grades 7-8
  - Kamiakin Junior High (1995) Grades 7-9
- Program:
  - Language Arts, Social Studies, Science – 3 periods/day
  - Other 3 periods students are enrolled in JH classes
  - LWSD curriculum with enrichment (next slide)

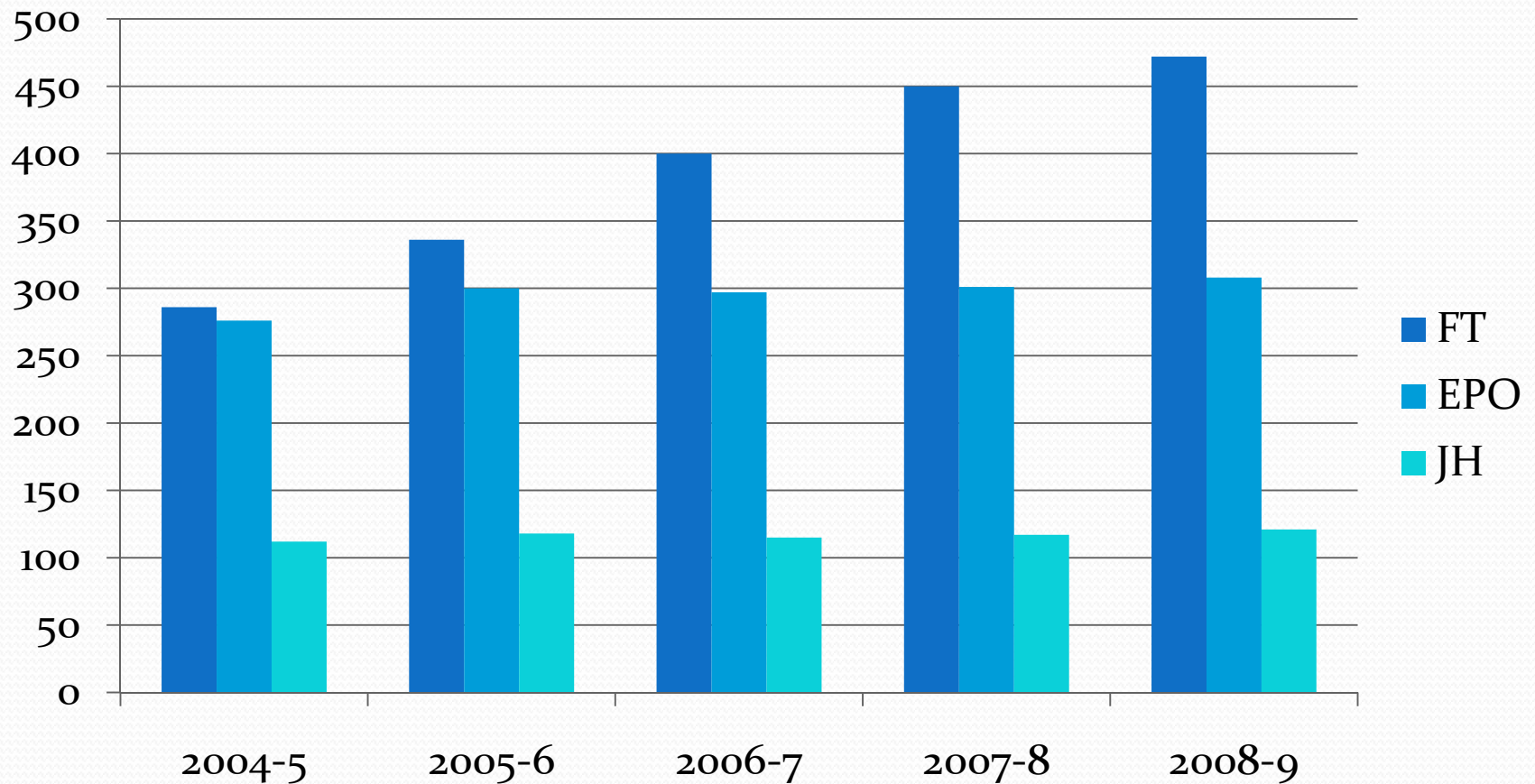
# Quest Curriculum and Instruction Model: Acceleration + Enrichment

- Acceleration: Curriculum is 1 year advanced LWSD curriculum
- Enrichment: Instruction designed for depth in content and skill development
  - Integrated thematic curriculum design (LWSD curriculum framework)
  - Simulations
  - Projects
  - Constructivist: deliberate connections to other knowledge
- Multi-age roll ahead for differentiation & personalization (1/2, 3/4 , 5/6)

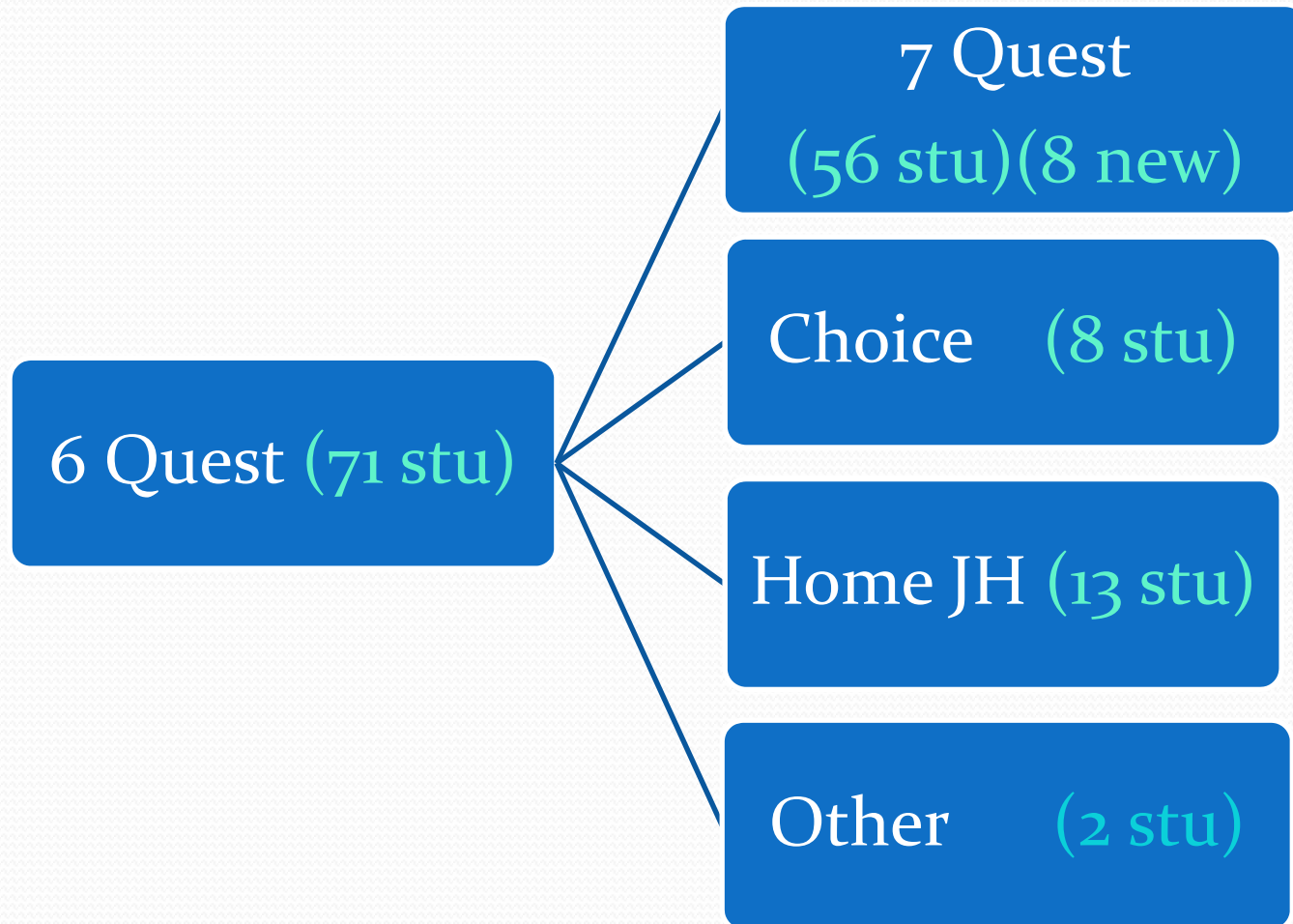
# Quest Enrollment 2008-09

- Full time students (1-6) 472 (new = 118)  
(wait list = 26)
- Enrichment Pull-Out (1-6) 308 (new =106)  
(waitlist= 8)
- Junior High Quest (7-9) 133 (new = 42)  
(waitlist = 12)
- Total 913 all waitlist students  
offered program

# Quest Enrollment



# 6<sup>th</sup> – 7<sup>th</sup> Grade Transition: 08-9



# Enrollment Process

- October
- November
- December
- January-February
- February-March
- April-May
- June
- July-Sept
- Orientation mtgs/maternal
- Applications open
- Initial screening
  - WASL, grades, Kinder Reading Survey
- Round 1 Testing –ITBS
- Round 2 Testing – CogAT
- Results & notification
- Staffing/student placement
- Waitlist placement/adjust

# Assessment Process

1

- Screen applications (1525 stus)
- Achievement (WASL, grades, rdg) (1230)

2

- ITBS (Reading, Language, Math)
- Achievement 97% (518 stus)

3

- CogAT (Language, Math)
- Ability 97% (est. 120 stus)

# Selection Criteria

- Select students by ability; most highly capable LWSD students
- State required criteria for funding: multiple criteria and assessment process (RCW 28A.185 Highly Capable)
  - Achievement: WASL, grades, K Rdg Survey, ITBS (97%)
  - Cognitive Ability: CogAT (97%)
  - Creativity: Renzulli
- Accommodations for ELL & “twice exceptional” students
- Students must demonstrate progress: intervention process

# Site selection

- Elementary Quest sites located in each learning community
- Junior High Quest located on both sides of district
- Location on space available basis
- Student placement on space available basis



Questions?

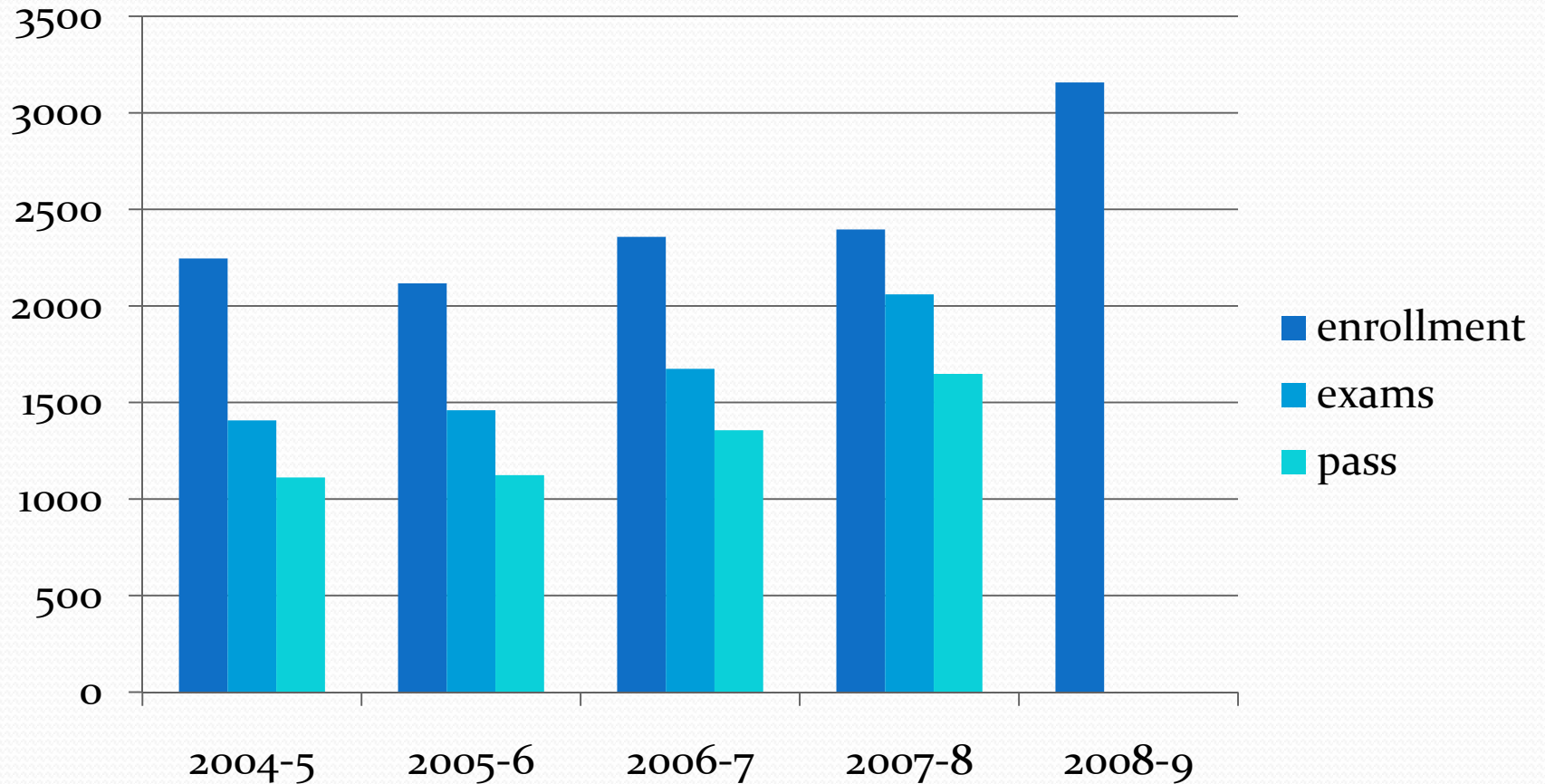
# AP Program: Background

- Advanced Placement begun by College Board in 1955
- Purpose is to provide high school courses comparable to college-level coursework for 11<sup>th</sup> and 12<sup>th</sup> graders
- All students are encouraged to participate
- 37 courses are approved by College Board
- Courses are audited nationally for curriculum alignment
- AP exam grades (3+ out of 5) qualify students for advanced placement in college and or preference for college admission

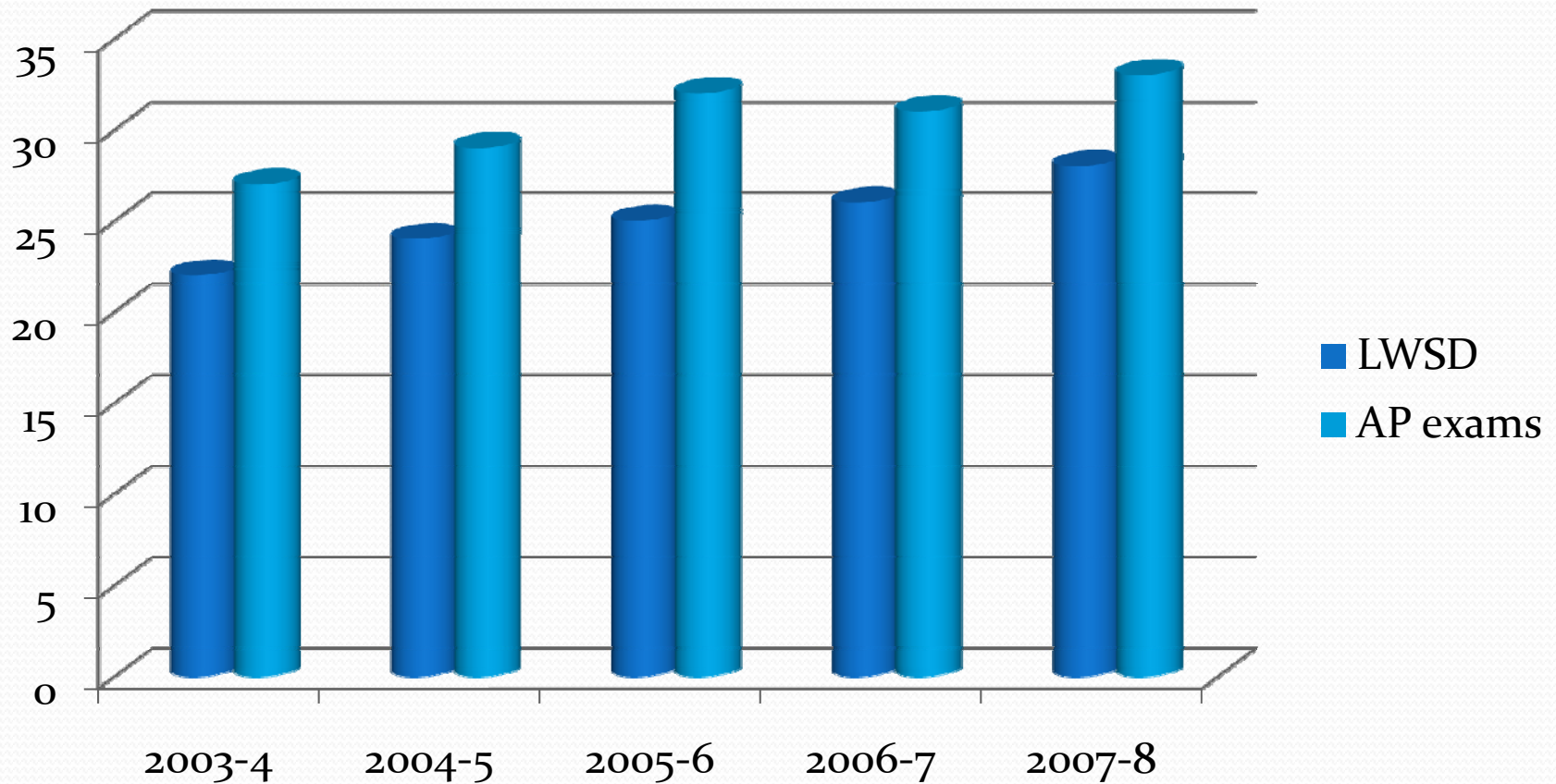
# AP in LWSD

- 2008-09 AP enrollment - 3157 student/classes
- 112 AP class sections offered in 5 high schools
- 7-15 courses per school, proportional to enrollment
- # of exams increasing approx. 25% each year
- 80% of LWSD students pass AP exams with a score of 3 or above – stable pass rate
- Students should begin prerequisite courses in 9<sup>th</sup> -10<sup>th</sup> grades – work with school counselors & course handbooks during registration.

# AP Data



# Ethnicity: Non-White %



# LWSD Accelerated Programs: Student Pathways

## Elem.

- FT
- EPO

## JH

- JHQuest
- Choice
- Home JH

## SH

- Honors
- AP
- depth
- electives



Questions?

# AP Panel Presentation

- Dr. Cindy Lundvall, Moderator
- Mr. Brad Malloy, LWHS  
Principal
- Mr. John Heil, ICS  
Science
- Ms. Jeanine Carlberg, LWHS,  
Social Studies
- Ms. Sandra Hoffman, RHS,  
World Language
- Mr. Peter Cheng, JHS,  
Mathematics
- Ms. Michele D'Amico, EHS,  
English
- Ms. Sandy Malone-Long, AP  
Coordinator
- Michael Patton, ICS
- Emily Chen, ICS
- Claire Wilson, LWHS
- Habib Behjatnia, LWHS
- Jennie Snow, RHS
- Melissa Krigbaum, RHS
- Makenna Hamre, JHS
- Lars Myren, JHS
- , EHS
- , EHS